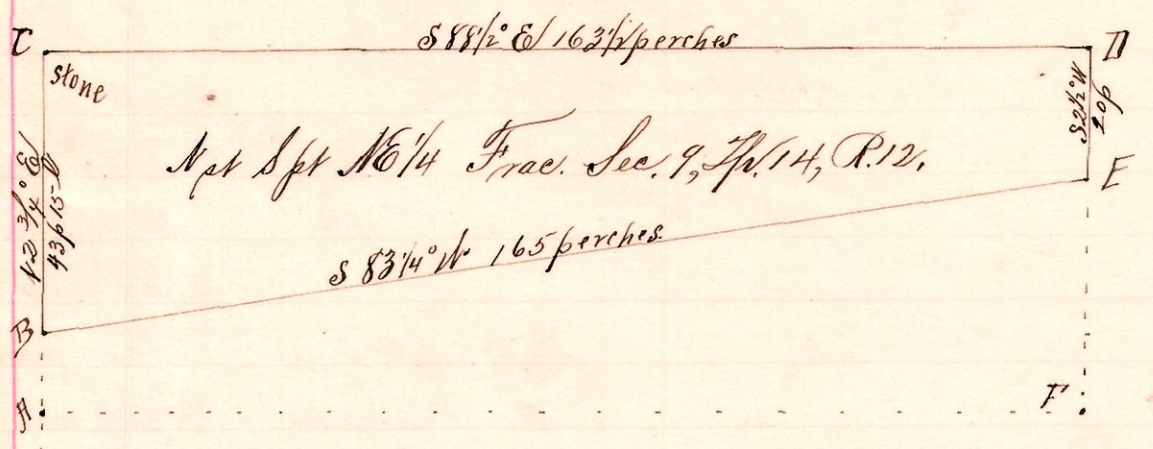


R 1/4 Sec 20 R12  
12 14 9 N6 S. Npt

No. 26.



Npt Spt N6 1/4 Frac. Sec. 9, Tp. 14, R. 12.

Notes.

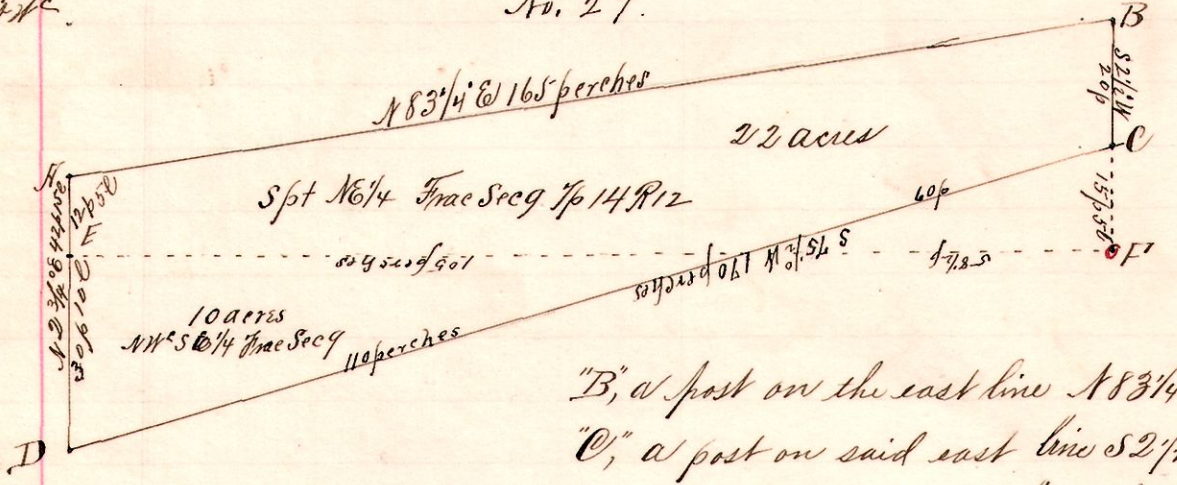
"H", the southwest corner of the south part of the northeast quarter of Fractional Section 9 Tp. 14, R. 12.  
 "B", the place of beginning a post on W. line 12 p S. north of H.

"C", a stone on the west line N 2 3/4 E 53 p 20 l from A  
 "D", a large White Oak tree S 88 1/2 E 163 1/2 perches from C, (on East line of Sec. 9.)  
 "E", a post on said east line S 83 1/4 W 165 perches to B.  
 Surveyed for Etta W. Schneider, Alex. B. Fry, & other Geo Fry Heirs  
 March 13, 1894.

Frank H. Genet,  
 County Surveyor

12 14 9 N6 Spt  
S8 Npt

No. 27.



Spt N6 1/4 Frac Sec 9 Tp 14 R 12

Notes

"H", a post on west line N 2 3/4 E 12 p S. l of the southwest corner of the northeast quarter of Frac. Sec. 9, Tp. 14, R. 12.

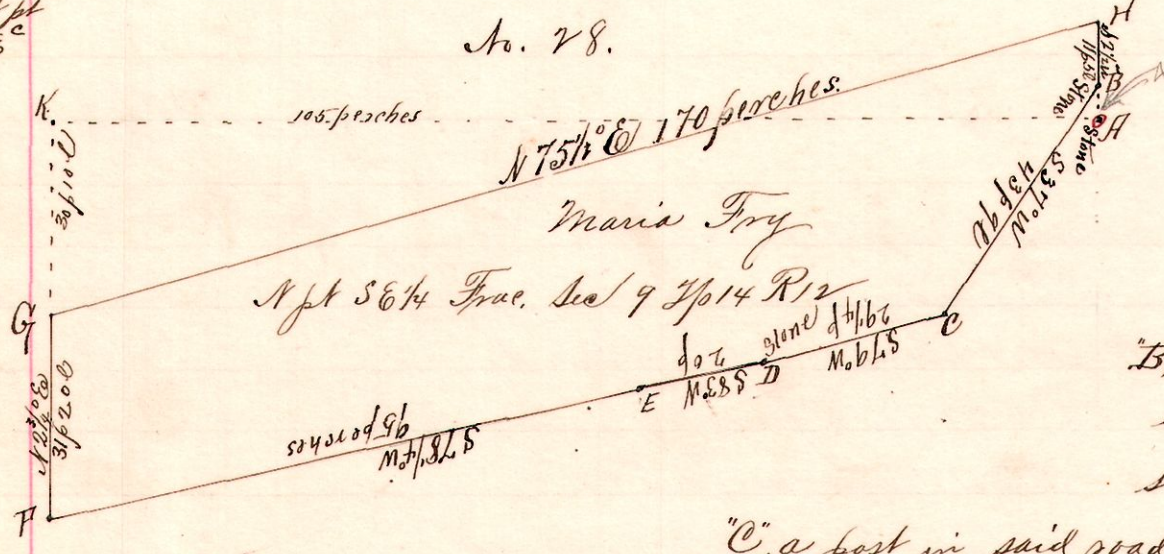
"B", a post on the east line N 83 1/4 E 165 perches from A.  
 "C", a post on said east line S 2 1/2 W 20 perches from B.  
 "D", a post on the west line of the southeast quarter of said Fractional Section 9, S 75 1/2 W 170 perches from C; also S 2 3/4 W 30 p 10 l from the southwest corner of said southeast quarter of Sec. 9.  
 Also N 2 3/4 E 42 perches 15 links to H, the place of beginning.

Surveyed for Leonard Fry, Alexander B. Fry and other Heirs of Geo Fry, dec.,  
 March 13, 1893.

Frank H. Genet,  
 County Surveyor.

12 14 9 N6 Spt  
S8 Npt

No. 28.



Npt S6 1/4 Frac. Sec. 9 Tp. 14 R. 12

Notes

"H", a stone at the northeast corner of the southeast quarter of Fractional Sec. 9, Tp. 14, R. 12.  
 "B", a stone on the east line of said Frac. Sec. 9, at north side public road N 2 3/4 E 4 p 20 l from H.

"C", a post in said road S 37 W 43 p 9 l from B.  
 "D", a stone at No. 1 Grave Yard S 79 W 29 p 6 l from C.  
 "E", the northwest corner Grave Yard S 83 W 20 p " D.  
 "F", a post on west line said quarter S 78 1/4 W 95 p " E.  
 "G", a post on west line said quarter N 2 3/4 E 3 p 20 l from F.  
 "H", a post on east line N 75 1/2 E 170 p from C & 11 p S. S. 2 1/2 W to B.

Surveyed for Maria Fry, Alex. B. Fry, and other Geo. Fry Heirs,  
 March 13, 1894

Frank H. Genet,  
 County Surveyor.