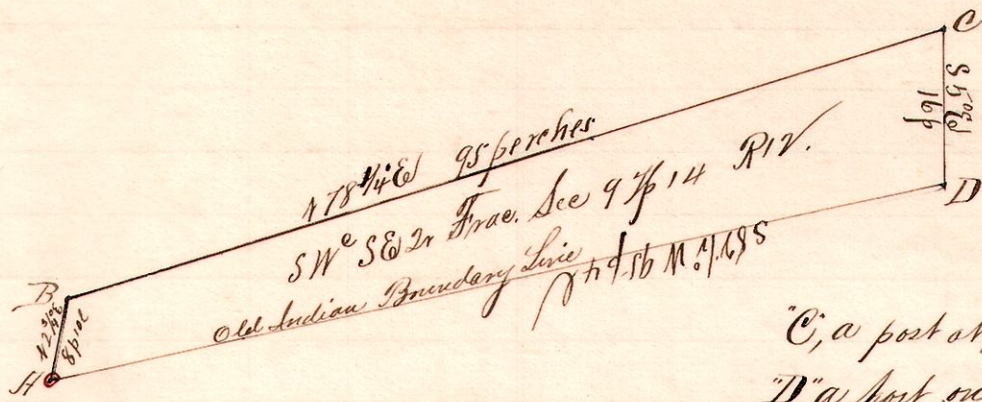


R 7th 2nd Sec 9
12 14 9 S & SW

No. 29.



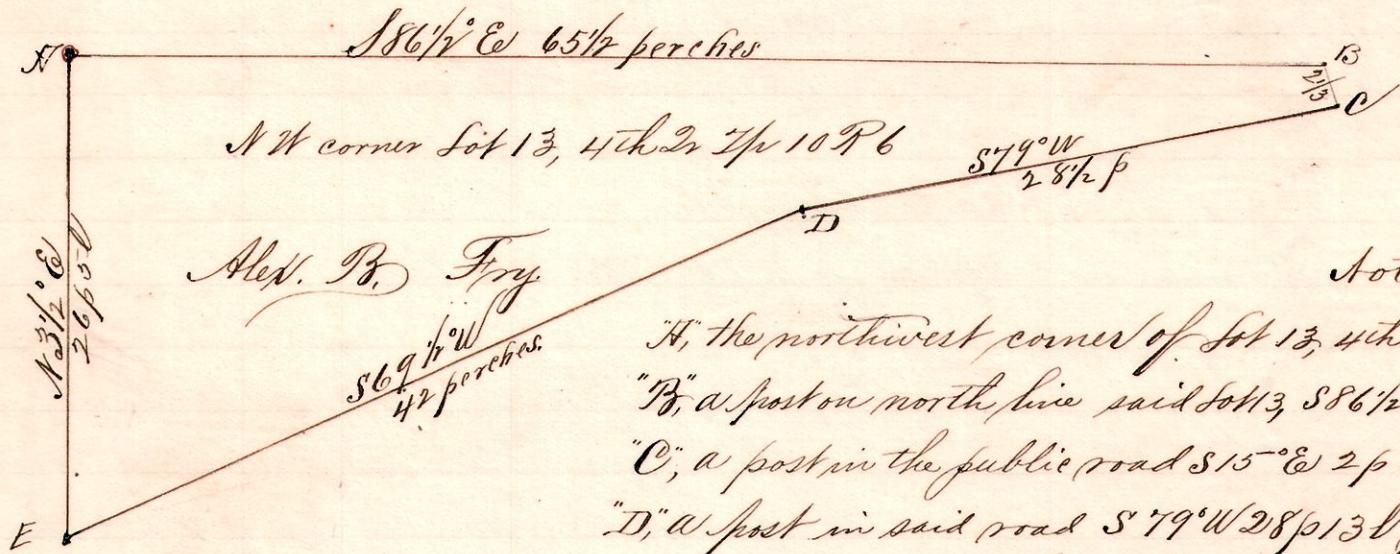
Notes
 "A", the southwest corner of the southeast Quarter of Frae. Sec 9 7th 14 R 12.
 "B", a post on west line said Southeast Quarter 12 1/2 E 8 p 10 l from A.
 "C", a post at northwest corner of said 178 1/4 E 95 p "B".
 "D", a post on old Ind. Boundary Line S 5 E 16 p from C and S 52 1/2 W 95 p 4 l to A.

Surveyed for Alexander B. Fry and other Heirs of Geo. Fry, dec., March 13, 1894.

Frank H. Gentry
County Surveyor.

R 7th 2nd Sec 13
6 10 4 13 NW

No. 30.



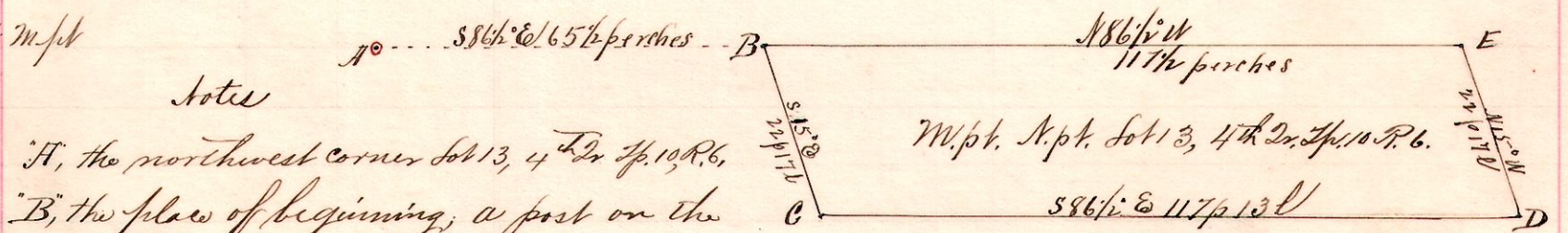
Notes
 "A", the northwest corner of Lot 13, 4th 2nd 7th 10 R 6.
 "B", a post on north line said Lot 13, S 86 1/2 E 65 1/2 p from A.
 "C", a post in the public road S 15 E 2 p 8 l from B.
 "D", a post in said road S 79 W 28 p 13 l from C.
 "E", a stone on west line of said Lot 13, S 69 1/2 W 42 perches from D and 26 p 5 l N 3 1/2 E to A.

Surveyed the above for Alex. B. Fry and other Heirs of Geo. Fry, dec., March 13, 1894.

Frank H. Gentry
County Surveyor.

No. 31.

6 10 4 13 Npt Mpt



Notes
 "A", the northwest corner Lot 13, 4th 2nd 7th 10 R 6.
 "B", the place of beginning; a post on the north line said Lot 13, S 86 1/2 E 65 1/2 p from A.
 "C", a post S 15 E 22 p 17 l from B.
 "D", a post S 86 1/2 E 117 1/2 perches from C.
 "E", a post on north line N 15 W 22 p 17 l from D; N 86 1/2 W 117 1/2 p to B.

Surveyed the above tract for Alex B. Fry, Charles Fry, Jacob F. Fry and other Heirs of George Fry, deceased March 13, 1894.

Frank H. Gentry
County Surveyor,
Holmes Co., O.