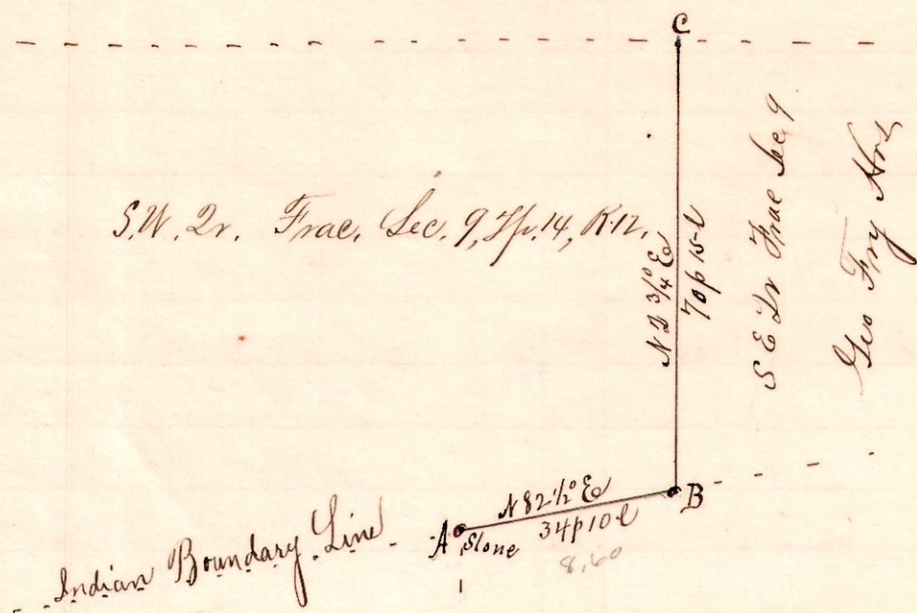


R 7th Sec 2v
12 14 9 SE SW

No. 36.



Notes

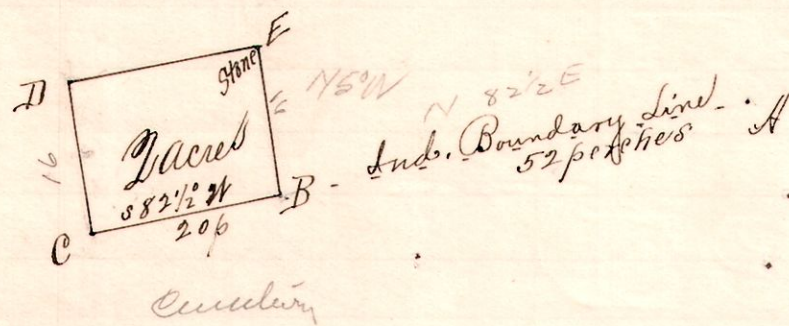
"A," a stone on old Indian Boundary, the northwest corner of Lot 5, 4th 1/4 Tp. 10 R. 6.
 "B," the southeast corner of the southwest quarter of Frac. Sec. 9 T. 14 R. 12. N 82 1/2° E 34 p 10 l from A
 "C," the northeast corner of said southeast quarter sec. N 13 3/4° E 70 p 15 l from B.

Surveyed for Alex B. Fry, Leonard Fry and others,
 March 14, 1894.

Frank H. Guet,
 County Surveyor.

No. 37.

12 14 9 SE SW



Notes

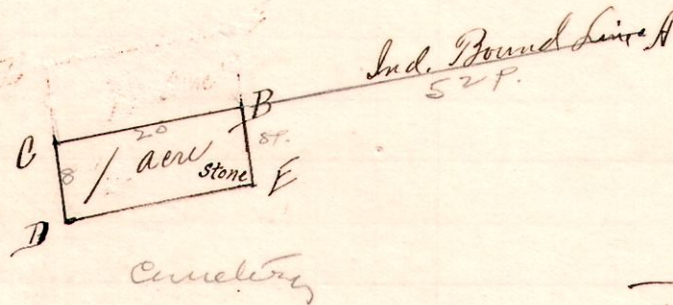
"A" is the southeast corner of the southeast quarter of Fractional Section 9 T. 14 R. 12.
 "B," a post on said line S 82 1/2° W 52 perches from A
 "C," S 82 1/2° W 20 p from B.
 "D," is N 15° W 16 p " C.
 "E," a stone N 82 1/2° E 20 perches from D.

Surveyed the above for Trustees Good Hope Cemetery & Geo Fry heirs
 March 14, 1894.

Frank H. Guet,
 County Surveyor.

No. 38.

R 7th 14th Lot 8th
6 10 4" 5 A m



Notes.

"A," a post on the north line of Lot 5, 4th 2d. Tp. 10 R. 6, also the southeast corner S 8 1/4 Frac Sec 9 T. 14 R. 12
 "B," a post on said line S 82 1/2° W 52 p from A.
 "C," a post on said line S 82 1/2° W 20 p from "B."
 "D," a post S 35° E 8 perches from C.
 "E," a stone at the southeast corner, N 15° E 20 p from D, and N 15° W 8 p to B.

Surveyed the above for the Trustees Good Hope Cemetery and others
 March 14, 1894.

Frank H. Guet,
 County Surveyor.