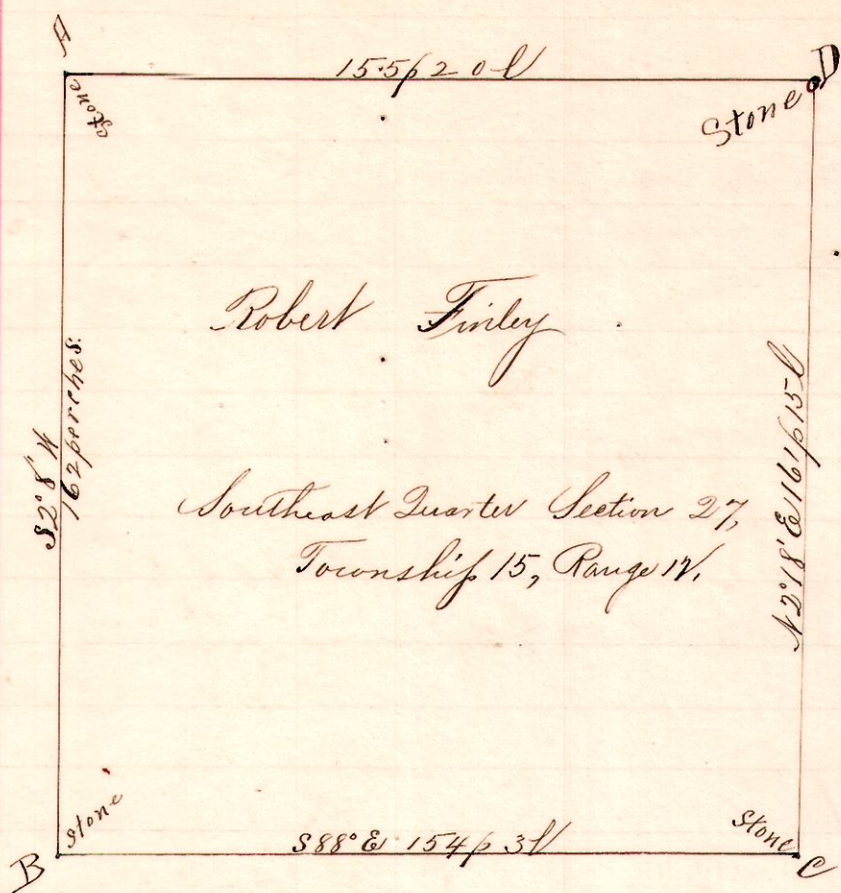


R 5/4 Sec 27  
12 15 27 SE

No. 40.



Notes  
 "A," a stone in the public road at the northwest corner of the southeast quarter Sec. 27, T. 15, R. 14.  
 "B," a stone in said road at the southwest corner of said quarter, S 22° 8' N 162 perches from A.  
 "C," a stone in a public road, at the southeast corner of said quarter S 88° E 154 p 3 l from B.  
 "D," the northeast corner of said quarter N 22° 8' E 161 p 15 l from C and 153 p 20 l west to A.

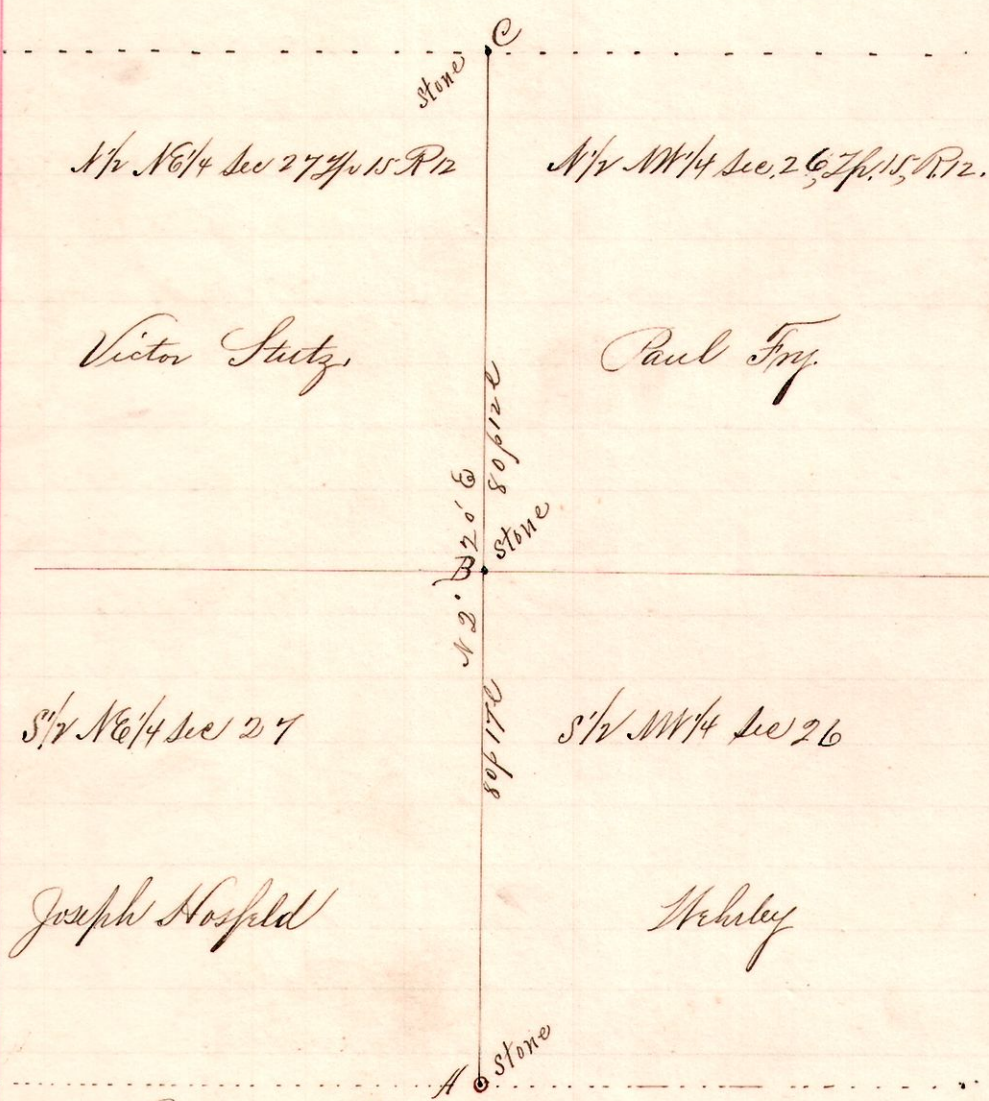
Found a large sugar head at D, weighing several tons.

Surveyed for Robert Finley, Joseph Hosfeld, Adam Sear, et al  
March 23, 1894.

Frank H. Gunt,  
County Surveyor.

No. 41

12 15 26 NW  
27 NE



Notes  
 "A," a stone at the southeast corner of the NE 1/4 Sec 27, and the SE 1/4 of the NW 1/4 of Sec. 26, T. 15, R. 12.  
 "B," a stone in the public road on the line between said quarters of sections 26 and 27 N 22° 26' E 80 p 17 l from A.  
 "C," a stone in a public road on the line between Holmes and Wayne Counties at the NE 1/4 Sec 27 and the NW 1/4 of Sec 26 T. 15, R. 12 N 22° 26' E 80 p 12 l from B.

Surveyed for Joseph Hosfeld, Victor Stutz, Paul Fry, et al,  
March 23, 1894.

Frank H. Gunt,  
County Surveyor.