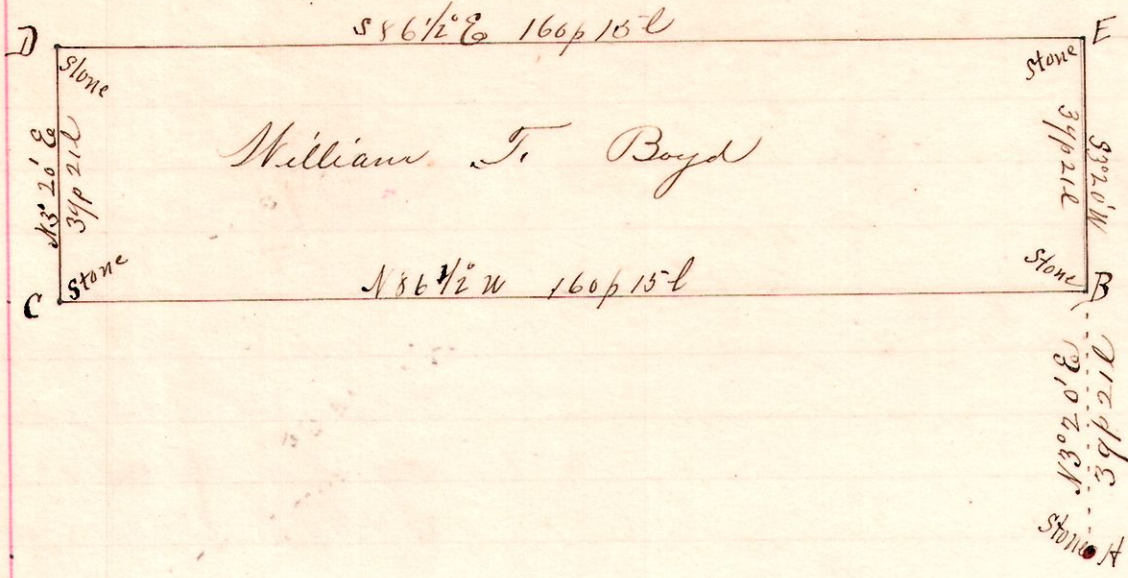


R 1/4 Sec 2  
6 9 1/4 4 1/2 Npt

No. 59.

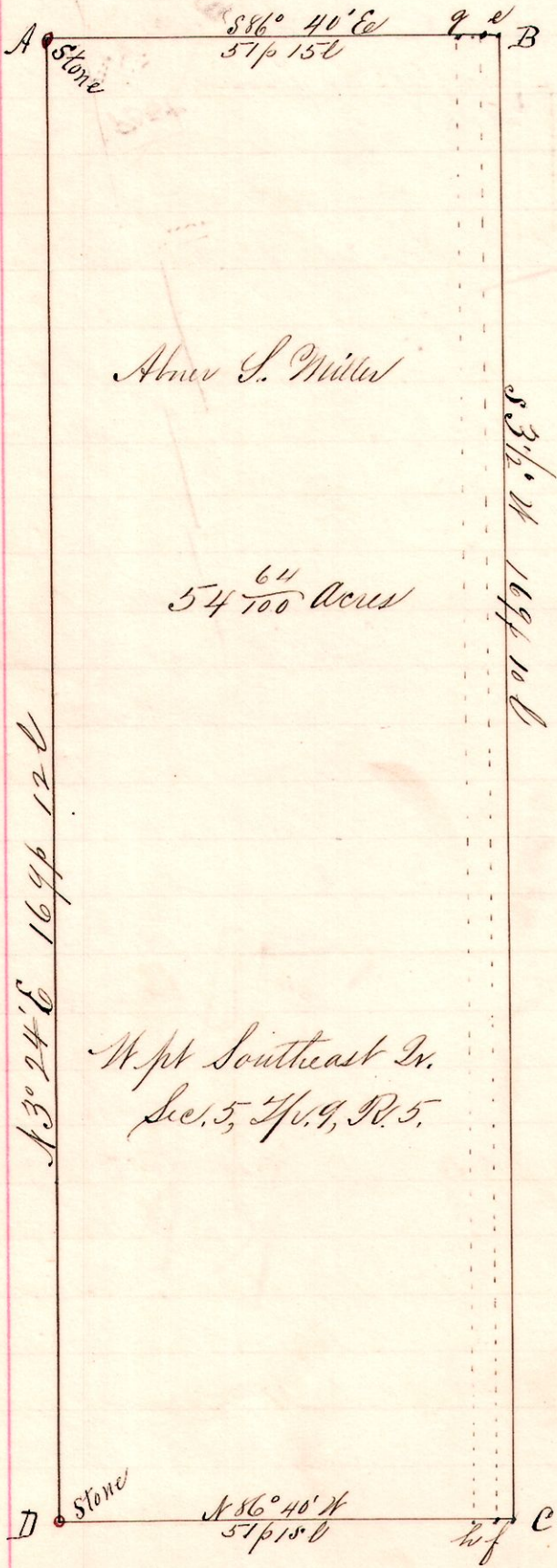


Notes  
 "H," stone at S 86° Lot 4  
 1st 1/4 Sec 9, R. 6.  
 "B," a stone on the East  
 line said lot 4, N 32° 0' E  
 39 p 21 l from A.  
 "C," a stone on west line  
 N 86 1/2 W 160 p 15 l from B.  
 "D," stone on said west line  
 N 32° 0' E 39 p 21 l from C.  
 "E," stone on East line S 86 1/2 E  
 160 p 15 l from D & S 32° 0' W 39 p 21 l to B  
 1894.  
 Frank H. Genet  
 County Surveyor.

Surveyed for William T. Boyd, U. H. Boyd, S. S. Boyd et al

R 1/4 Sec 2  
5 9 5 38 Npt

No. 60.



Notes.  
 "A," is a stone at the  
 northwest corner of the  
 southeast quarter of section 5  
 T. 9 Range 5. (Proble T. 9)  
 "B," a post on the north line  
 of said quarter section,  
 S 86° 40' E 57 perches 15 links  
 from A.  
 "C," a post on the south line  
 of said section S 3 1/2° W  
 169 perches 10 links from B.  
 "D," a stone at the south-  
 west corner of said quarter  
 N 86° 40' W 57 perches 15 links  
 from C, and N 3° 24' E  
 169 perches 12 links to A.  
 of is 2 p 18 l west from BC  
 of is 2 p 15 l " " of  
 Chainmen:  
 A. S. Miller  
 Emanuel J. Miller  
 Marker:  
 Eli Sengerich  
 Aoman  
 Abner S. Miller.

Surveyed for Abner S. Miller, Gost Miller's Heirs, et al,  
 March 27, 1894.

Frank H. Genet,  
 County Surveyor.