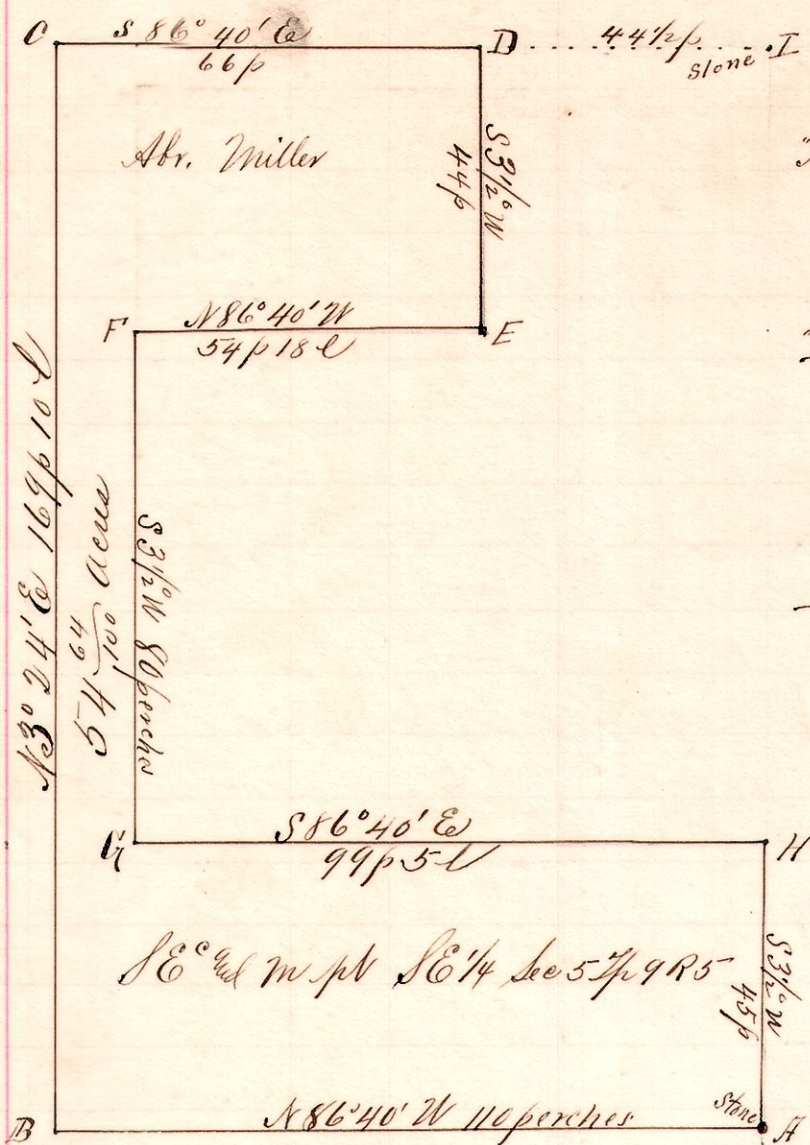


R 1/2 Sec 24
595 SE SE 7/16 pt

No. 61.



Notes

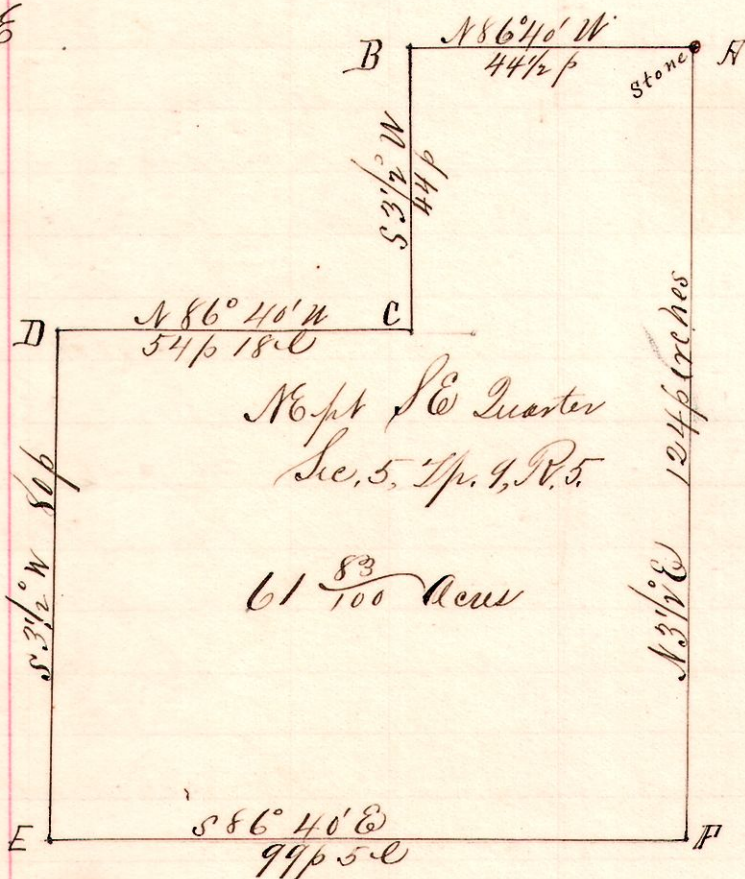
- "A," is a stone at the southeast corner of the southeast Quarter of Section 5 Twp 9 R 5 (Berlin Twp).
- "B," a post on the south line of said Quarter N 86° 40' W 110 perches from A.
- "C," a post on the north line of said Qr N 3° 24' E 169 p 10 c from B.
- "D," a post on said north line S 86° 40' E 66 perches from C and do 44 1/2 " to "I" a stone at the northeast corner of said quarter
- "E," a post S 3 1/2° W 44 p from D,
- "F," a post N 86° 40' W 54 p 18 c from E
- "G," " S 3 1/2° W 80 p from F.
- "H," a post on east line S 86° 40' E 99 p 5 c from G, and S 3 1/2° W 45 p to A.

Surveyed for Abr. Miller and Heirs of Gt. S. Miller, et al,
March 28, 1894.

Frank H. Genet,
County Surveyor.

595 SE NE

No. 62.



Notes.

- "A," Stone at the northeast corner of the southeast Quarter of Sec. 5, Twp. 9, R. 5.
- "B," post on said north line quarter N 86° 40' W 44 1/2 p from A.
- "C," a post S 3 1/2° W 44 p from B.
- "D," " " N 86° 40' W 54 p 18 c " C.
- "E," " " on south line Quarter S 3 1/2° W 80 perches from D.
- "F," a post on the east line S 86° 40' E 99 p c from E, and N 3 1/2° E 124 perches to H.

Chairmen:

Alex E. Miller
Emanuel J. Miller

Surveyed for Heirs S. J. Miller & Gt. S. Miller et al,
March 28, 1894.

Frank H. Genet,
County Surveyor,
Holmes Co.,
Ohio.