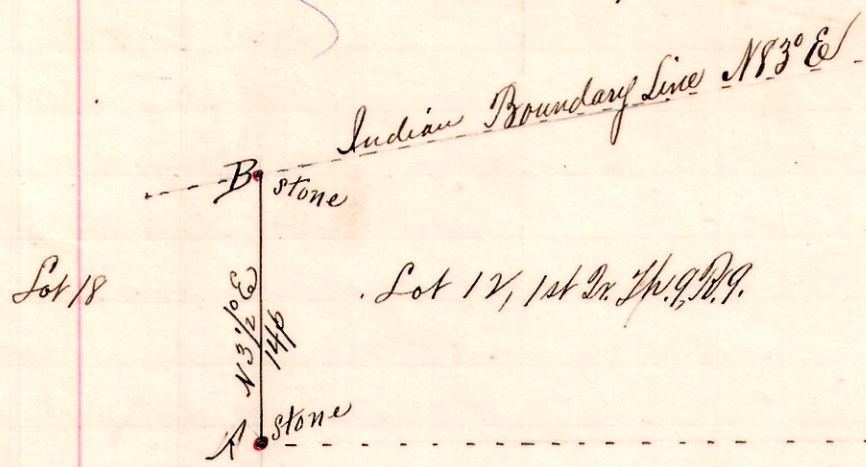


R 7th 14th Lot
9 9 1st 19th R 15

No. 85.

SW 1/4 Sec 24 T^h 19 R 15



Notes

"A", a stone at the SW Lot 12 T^h 19 R 15 (1st Dr. T^h)

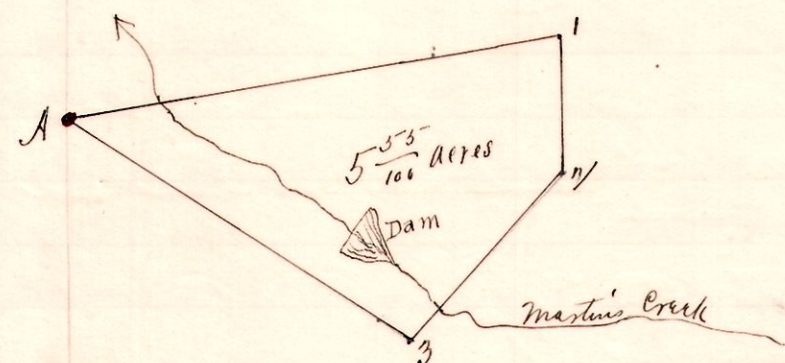
"B", cut in rock, at the northwest corner said Lot 12, on Indian Boundary Line N 3 1/2° E 14 perches from A.

"C", a stone on said Boundary Line at the SE 1/4 Sec. 24, T^h 19, R. 15. (Ind. T^h).

Surveyed for John G. Boling, et al, in Legal Survey of
Sept 10, 1894.
Frank H. Genet, Co. Surveyor.

R 7th 14th Lot 04
6 10 3rd 4 N 6°

No. 86.



1. NE corner Lot 4 T^h 10 R 6 (3d Dr).
2. South 3.50 ch to stone corner
3. S 42 1/2° W 5.95 ch, Jack Oak 20 in, corner N. N 56 1/2° W 10.50 ch, stone at SW 1/4 Sec. 8, T^h 14, R. 12, on Indian Boundary line E 130 1/4° E 13 ch to beginning

I hereby certify the foregoing to be correct plat and notes of the lands above described; August 20, 1857, Samuel Robinson, Surveyor.
A correct copy by request of Abraham Mast
Frank H. Genet, Co. Surveyor.

R 7th Sec 24 R 15
12 14 8 SW SW 1/4

No. 87.



- "A", stone at SW 1/4 Sec 8 T^h 14 R 12 N 80 1/4° E 7.00 chains to post.
1. N 37° W 6.00 chains " "
 2. N 63° W 3.68 ch " "
 3. S 1 1/2° E 7.50 chains to place of beginning containing 3 acres

A correct copy of a plat of S. Robinson's Survey of August 20, 1857.
Frank H. Genet, Co. Surveyor.