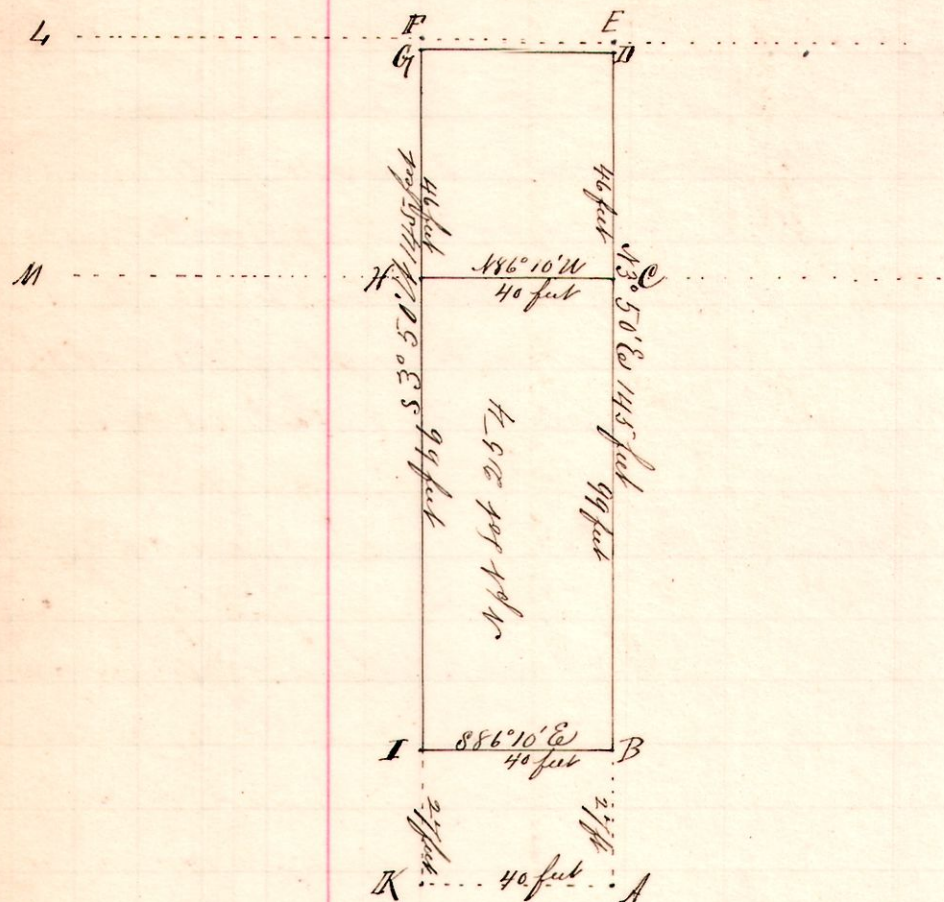


7 9 12 Millersburg  
Lot 254

No. 88.



The dotted lines L F E  
and M H C, include a part  
of Perkins Street never  
used by the Public

Surveyed for Louis Smith and Susan Cary et al September 29<sup>th</sup> 1894.

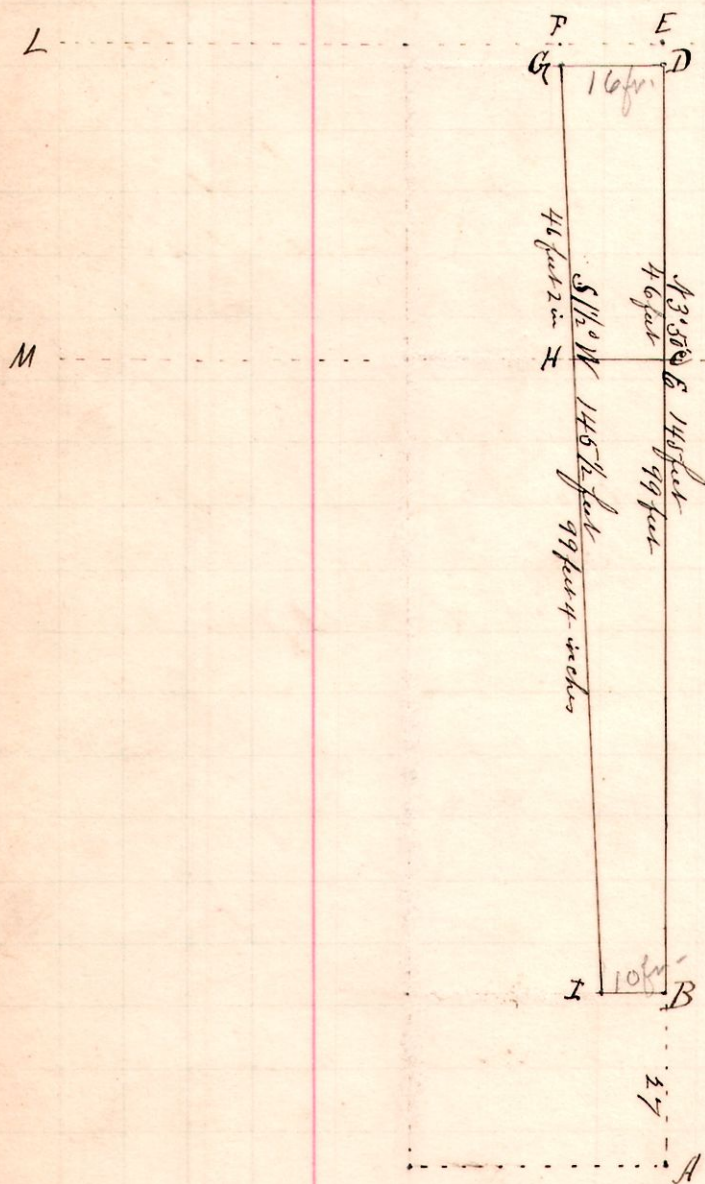
Frank H. Gault,  
County Surveyor.

Notes.

- "A", the southeast corner of Lot No 254 (Millersburg)
- "B", the place of beginning is a post on the east line of said Lot N 33° 50' E 27 feet from A.
- "C", the northeast corner of said Lot 254 is N 33° 50' E 99 feet from A.
- "D", a post in Perkins Street N 33° 50' E 46 feet from C and 3 1/2 feet to E, a post at north side of said street.
- "E", a post in said Street N 86° 10' W 40 feet from D and S 33° 50' W 3 1/2 feet from F, a post at north side said street.
- "F", a post at the northwest corner of Lot 254, S 33° 50' W 46 feet from G and N 86° 10' W 40 feet from C.
- "G", a post at the southeast corner is S 33° 50' W 99 feet from H and 145 feet from C also 27 feet to K the SW<sup>th</sup> of Lot 254 also S 86° 10' E 40 feet to B.

7 9 12 Millersburg  
Lot 253

No. 89.



Surveyed for Louis Smith and Susan Cary et al  
Sept. 29, 1894.

Frank H. Gault,  
County Surveyor.

Notes.

- "A", the southeast corner Lot 253 (Millersburg)
- "B", the place of beginning is a post, the east line said Lot, N 33° 50' E 27 feet from A.
- "C", a post the northeast corner said Lot, N 33° 50' E 99 feet from B.
- "D", a post in Perkins Street N 33° 50' E 46 feet from C and 3 1/2 feet to E a post at north side said street
- "E", a post in said Street N 86° 10' W 16 feet from D; S 11 1/2° W 3 1/2 feet from F, a post at the north side said street, also S 11 1/2° W 46 feet 2 inches to H, a post at the northwest corner Lot 253 and 145 feet to I, a post 10 feet west of B the place of beginning.
- L F E is the north line, and M H C, the south line of part of Perkins St not used by the public.