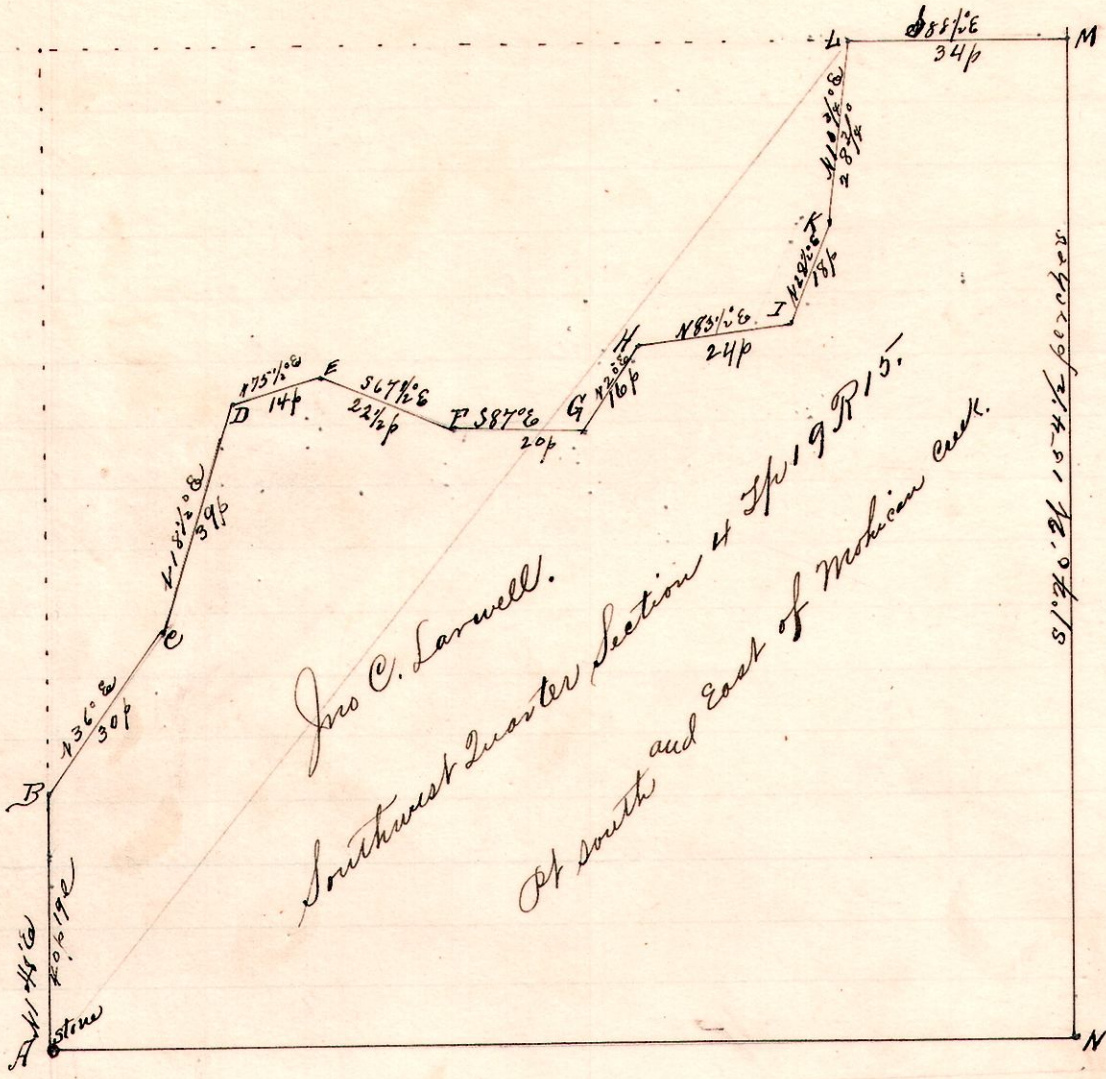


P. W. Sec 21  
15 19 4 SW 3rd

No. 90.



Notes.

"H", stone at the southwest corner of the southwest quarter of Section 4, T<sub>19</sub> R<sub>15</sub> (Washington T<sub>19</sub>)

Took as witnesses:

{ B Walnut 6 S 53° W 8 1/2 l  
Wash 16 N 53° E 34 .

"B", a post on the west line, the center of Lake fork of Mochican Creek N 48° E 40 p 1/4 l from A.

"C", N 36° E 30 p in said creek

"D", N 75 1/2° E 14 p " "

"E", N 75 1/2° E 22 1/2 p " "

"F", S 67 1/2° E 20 p " "

"G", S 87° E 24 p " "

"H", N 70° E 16 p " "

"I", N 83 1/2° E 24 p " "

"L", N 28 1/2° E 28 3/4 p " "

"M", N 10° E 28 3/4 p in said creek and on the north line said quarter -

witness { J. P. Knoble & N 86° W 75 l

"M", a stone at the northeast corner S 88 1/2° E 34 perches from L; took as a new witness R. Oak S 45° E 1 link

"N", the southeast corner said quarter S 1° 40' W 154 p 13 links from M.

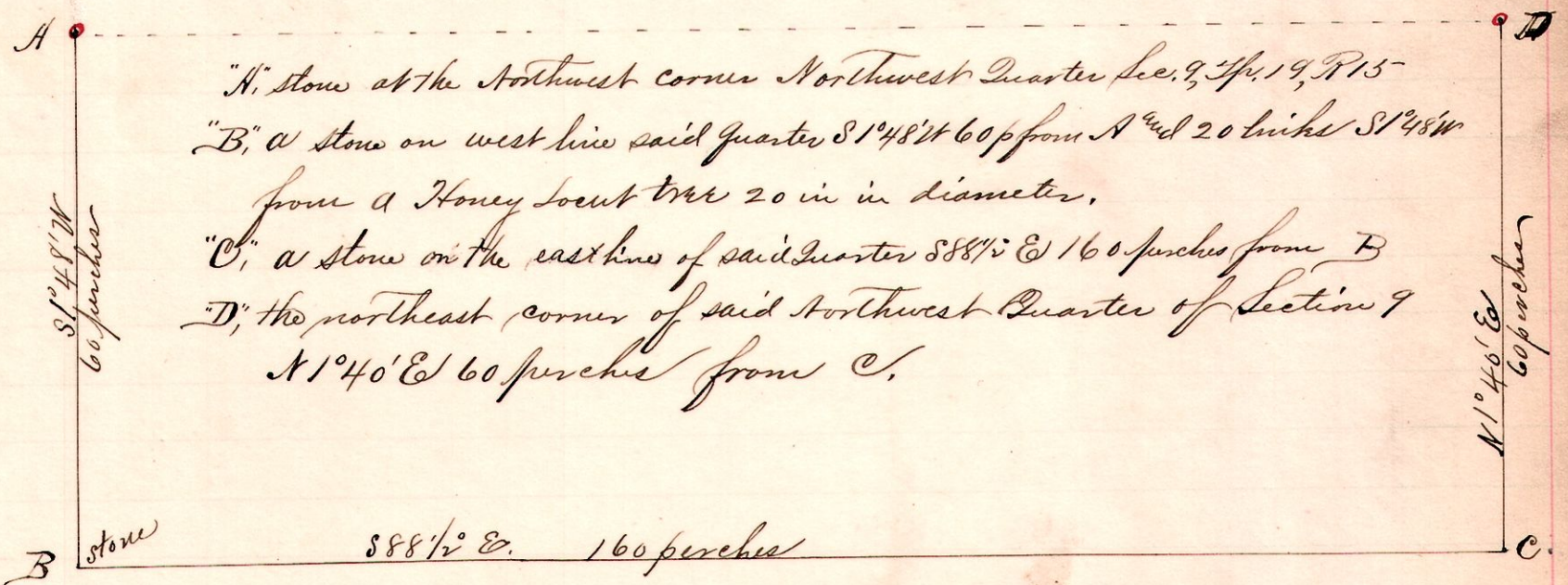
Chairman, - Thurman Knoble Ed. Gust,

Surveyed for John C. Larwell, Geo. W. Seiringer, M. Wendling et al  
Oct 11, 12, 1894.

Frank H. Gust  
County Surveyor

15 19 9 NW 1

No 91



"A", stone at the Northwest corner Northwest Quarter Sec. 9, T<sub>19</sub> R<sub>15</sub>

"B", a stone on west line said quarter S 1° 48' E 60 p from A and 20 links S 1° 48' W from a Honey Locust tree 20 in in diameter.

"C", a stone on the east line of said quarter S 88 1/2° E 160 perches from B

"D", the northeast corner of said Northwest Quarter of Section 9 N 1° 40' E 60 perches from C.

Chairman { Edward Gust  
Thurman Knoble

Markers { Clement Knoble  
H. P. Knoble

Surveyed for John C. Larwell, Jacob Heimbinger and others,  
Oct. 12, 1894.

Frank H. Gust,  
County Surveyor.