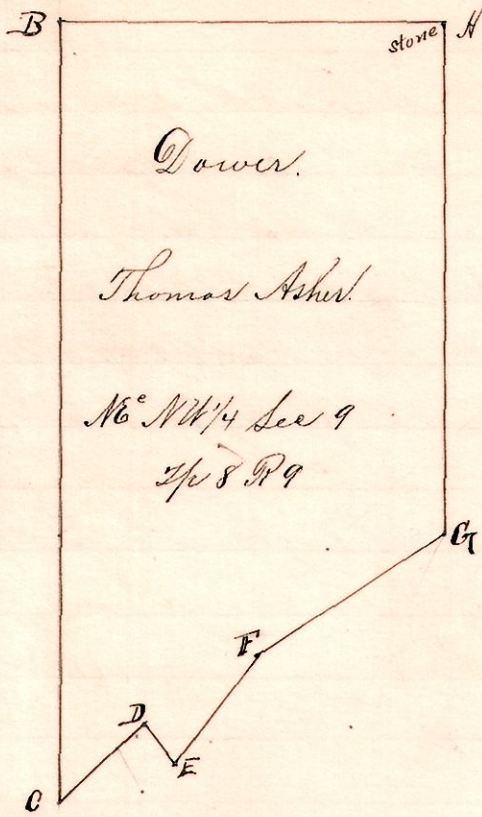


R 1/4 Sec 2 R 9.
9 8 9 NW SE

No. 107.



Notes

A, the northeast corner of the southeast quarter of the NW 1/4 Sec 9, Tpt 8, R 9.
 "B", a post on north line N86 1/2° W 40 p from A.
 "C", " " at north side of road S 3 1/2° W 81 " B.
 "D", " " " south " " " N 50° E 12 p " C
 "E", " " on north line R.R. S 26 1/2° E 5 p " D
 "F", " " " " " " N 48 1/2° E 14 p " E
 "G", " " " " " " the east line of said quarter
 N 10° E 22 p from F, and N 3 1/2° E 53 perches to A.

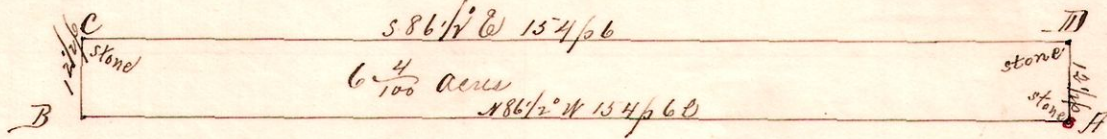
chainman
 Joseph Borden and John Jones.
 Others Present and assisting
 Lewis Powelson, Joseph L. W. Kenzie, Theodore Mackey.
 of the estate of Asher, et al

Surveyed for Joseph Borden
 Dec, 21, 1894.

Frank H. Genet,
 County Surveyor.

7 9 2nd 6 Spt

No. 108.



Notes

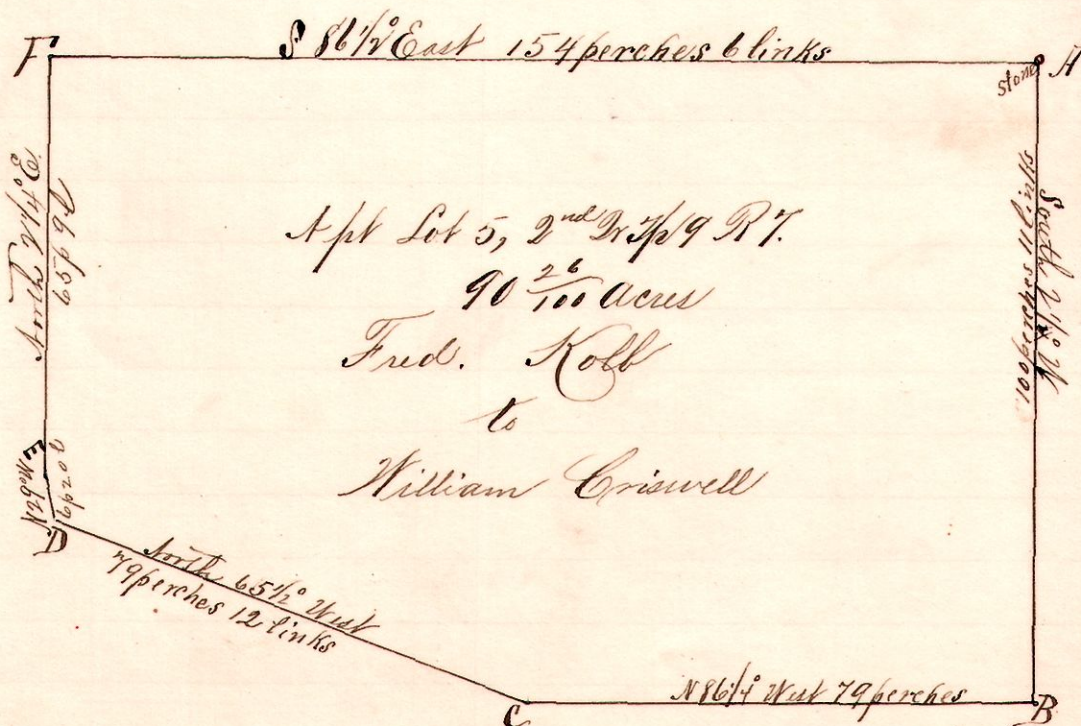
A, stone at the SE Lot 6
 2nd 1/4 Tpt 9 R 9
 "B", the SW said Lot N 86 1/2° W
 154 p 6 l from A.
 "C", stone on west line
 N 77 1/2° E 17 1/2 p from B.
 "D", stone on East line

Surveyed for Fred Koll, William Criswell and others 1894.

Frank H. Genet,
 County Surveyor.

7 9 2nd 5 Spt

No. 109.



Notes

A, stone at SE Lot 5,
 2nd 1/4 Tpt 9, R 9,
 "B", a post on the East
 line S 2 1/4° W 100 p 11 l from A.
 "C", post N 86 1/2° W 79 p " B
 "D", " " N 65 1/2° W 79 p 12 l " C
 "E", post on west line
 N 29° W 6 p 20 l from D.
 "F", a post at the NW
 N 2 1/4° E 65 p 9 l from E
 and S 8 1/2° E 154 p 6 l to A.

Surveyed for Fred Koll, William Criswell, et al 1894.

Frank H. Genet,
 County Surveyor.