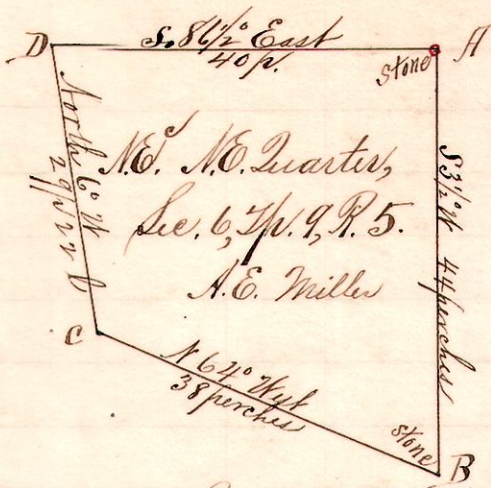


R 7th Sec 2
596 N.E. 1/4

No. 110.



Notes.

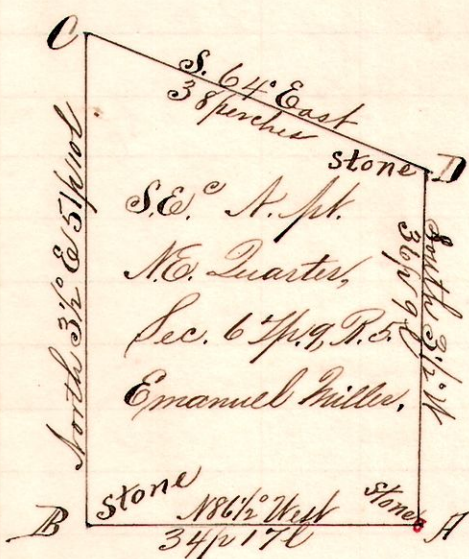
"A," stone at the northeast corner of the Northeast Quarter of Section 6, Tp. 9, Range 5.
 "B," a stone on the east line S 3 1/2' W 44 p. from A.
 "C," a post N 64' W 38 perches from B.
 "D," a post on the north line North 6' W 29 p. 22 l from C and S 86 1/2' East 40 p to A.

Surveyed for Alex. E. Miller, Sam. E., David E., & Emanuel Miller
 Jan. 9, 1895.

Frank H. Genet,
 County Surveyor.

596 N.E. 1/4

No. 111.



Notes.

"A," stone at the southeast corner of the north half of the Northeast Quarter Sec. 6, Tp. 9, R. 5.
 "B," a stone on south line N 86 1/2' West 34 p 17 l from A.
 "C," a post North 3 1/2' E 57 perches 10 links " B.
 "D," a stone on the east line of said Section 6, S 64' East 38 p from C, and South 3 1/2' W 36 p 9 l to A.

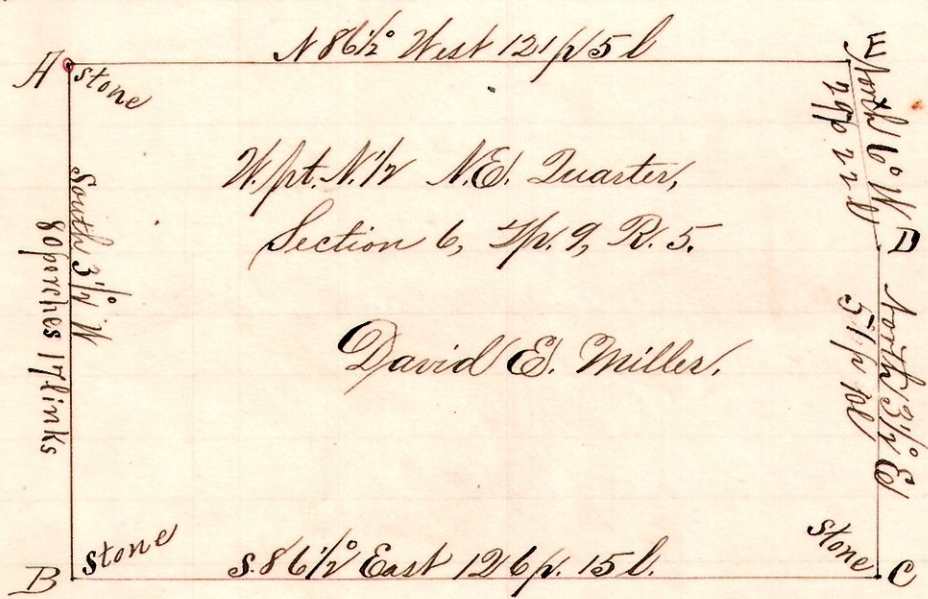
Jan. 9, 1895,

Surveyed for Emanuel Miller, A.E., and S.E. Miller, et al,

Frank H. Genet,
 County Surveyor.

596 N.E. 1/4

No. 112.



Notes.

"A," a stone at the N.W. corner of the Northeast Quarter Sec. 6, Tp. 9, R. 5.
 "B," a stone at the S.W. N.E. 1/4 said Quarter South 3 1/2' W 80 p 17 l from A.
 "C," a stone on the south line of said 1/4 Quarter S 86 1/2' East, 126 p 15 l from B.
 "D," a post North 3 1/2' E 57 p 10 l from C.
 "E," a post on North line North 6' W 29 p 22 l from D, and N 86 1/2' West 121 perches 5 links to A.

Jacob D. Schlabach }
 Daniel L. Goder } chainmen
 Eli Schlabach }
 Sharp Maxwell } markers.

Surveyed for David E. Miller, et al,
 Jan. 9th 1895.

Frank H. Genet,
 County Surveyor.