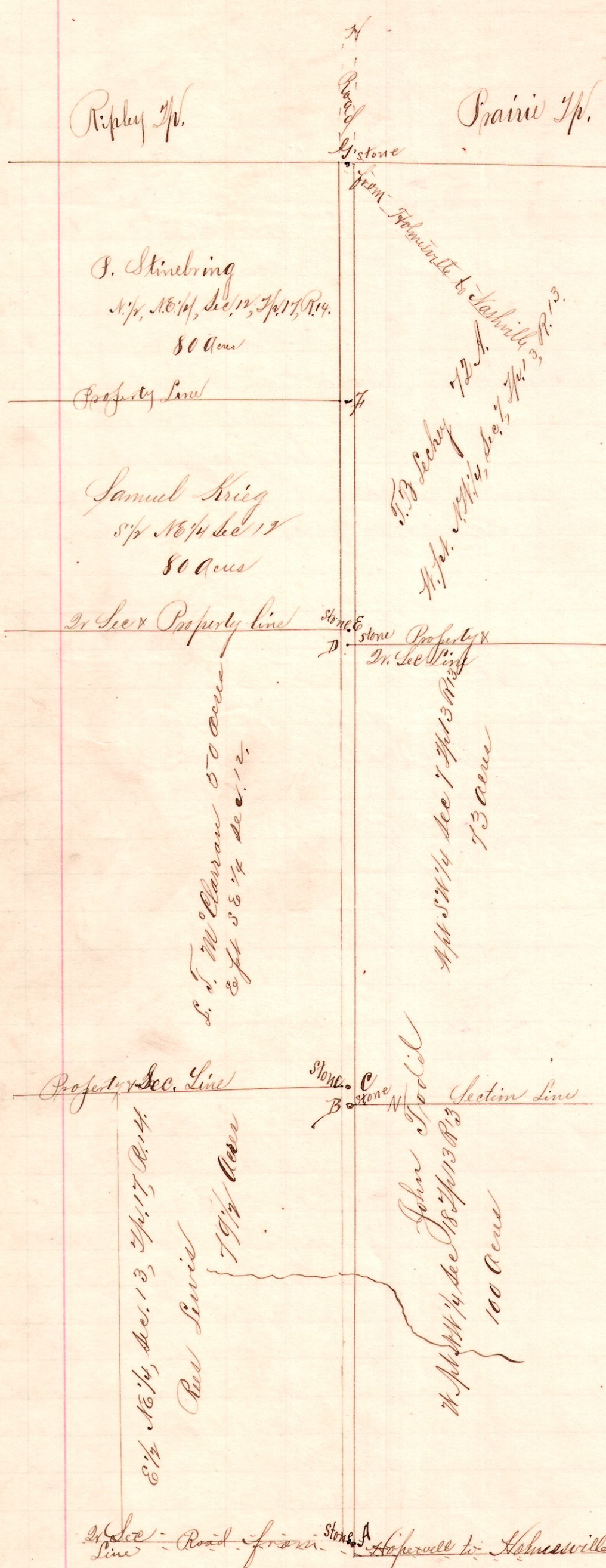


R 7/4 Sec
122 East
14 17 {13} line
13 13 {7} West
13 line

No. 140.



Notes.

"A," the place of beginning is a stone on the line between Tps. 13 & 14 (Prairie & Ripley) at the southeast corner of Sec. 13, T. 17, R. 14, in the center of the public road leading from Holmsville to Hopewell.

"B," a stone at the northwest corner of the N. E. 1/4 of Sec. 15, T. 13, R. 13, N. 50° E. 135 p. 10 l. from A.

"C," a stone at the northeast corner of the northeast quarter of Sec. 13, T. 17, R. 14, North 5 p. 20 l. from B.

"D," a stone at the northwest corner of the southwest quarter of Sec. 7, T. 13, R. 14.

"E," a stone at the northeast corner of the southeast quarter of Sec. 12, T. 17, R. 14, N. 30° E. 160 p. from C and 2 p. 19 l. from D.

"G," a stone at the northeast corner of the northeast quarter of Sec. 12, T. 17, R. 14, in the center of the road leading from Holmsville to Nashville, N. 30° E. 160 p. from E and 480 p. 5 l. from H.

The line ABCDEFG is the line between T. 13 R. 13 and T. 17, R. 14, (Prairie & Ripley)

Viewers:

W. S. Harpster, J. P. Close and Thos. Miller,
Chairmen;

Samuel Krieg & S. F. McClarran,
J. S. Maxwell, monitors.

The above is a correct plat of a county Road petitioned for by William Todd and others as viewed and surveyed May 13, 1895.

Frank G. Gunt,
Co. Surveyor.