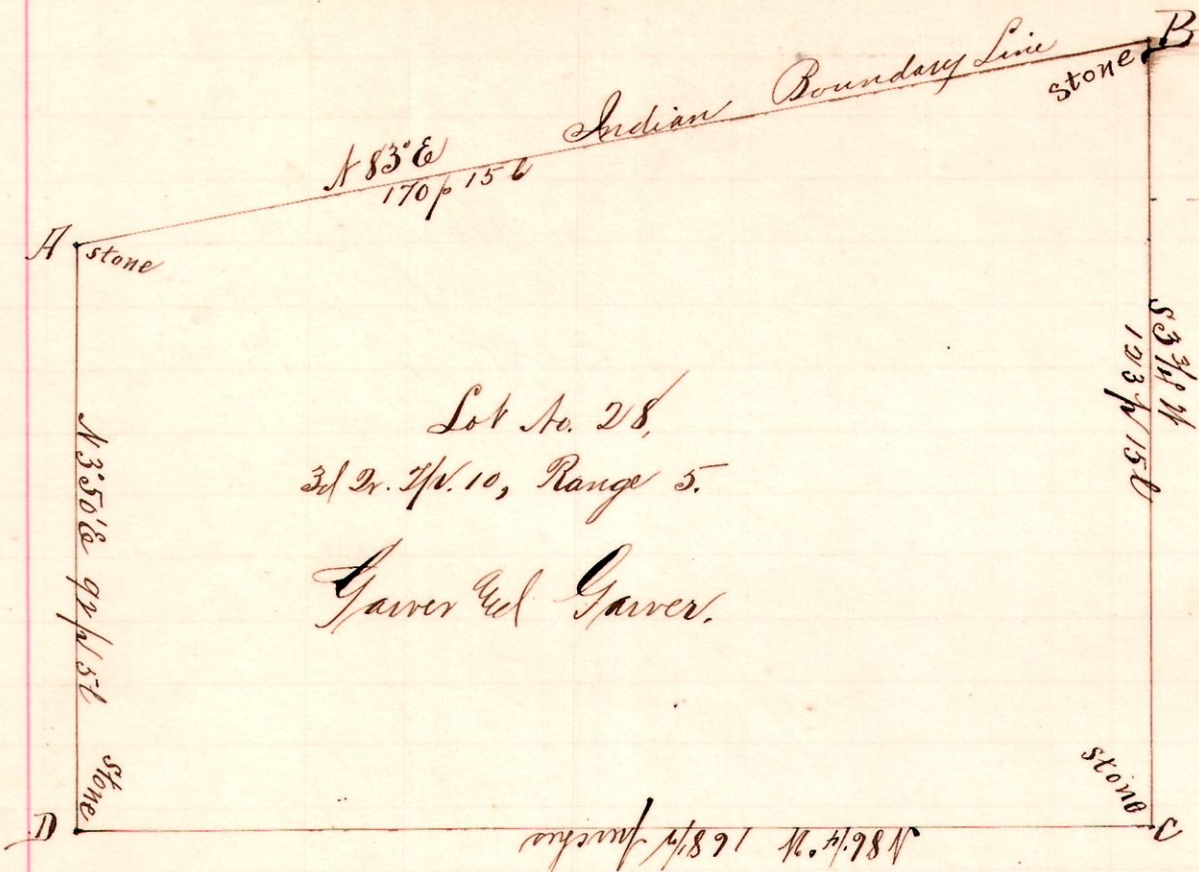


R 7/2 Drth Lots  
5 10 3" 28

No 156.



Lot No. 28,  
3d 2d. 7/10, Range 5.  
Garver and Garver.

Lot 18

Lot 19

Chairmen:  
Sam. M. Briar  
Leonard Pottman.  
Others present:  
Henry Arnold & Joe Fry.

A survey made for Nath. Garver, John Arnold, F. H. H. et al,  
to determine the boundary lines of Lot 28, 3d 2d. 7/10, R. 5; also the corners  
B, C and D; At B we placed a nigger head stone 3 feet long. Surveyed  
August 22, 1895.

Frank H. Genet, C. Surveyor.

No. 157.

5 10 3" {  
19  
27  
28  
20

A stone

S 86 1/4° E 168 1/2 p 156

Notes.

"A", a stone in the public road at the northwest corner Lot 27  
and the southwest corner of Lot 28, 3d 2d. 7/10 R. 5. Said  
corner was about 4 feet under the surface. We placed  
another stone on the same and took as a new witness a  
W. ash 20 3/5 9 1/2 35 1/2 l.

"B", the southeast corner of Lot 28 and the southwest corner of  
Lot 19 is S 86 1/4° E 168 1/2 p from A; found original W. oak  
N 44° E 30 links from which we established said corner  
by a stone 32 inches long; took as a new witness a  
W. ash 3 S 28 1/2° W 7 1/2 links.

"C", a stone at the northeast corner of Lot 27 and the  
northwest corner of Lot 29 of said 3d 2d. 7/10 R. 5  
and S 86 1/4° E 47 links from the corner at B.

Surveyed the above for Nath. Garver, John Arnold &c  
The Arnold Church Property and others on  
August 22<sup>nd</sup> 1895.

Frank H. Genet,  
C. Surveyor,  
Holmes & Co.  
O.

B stone  
stone C