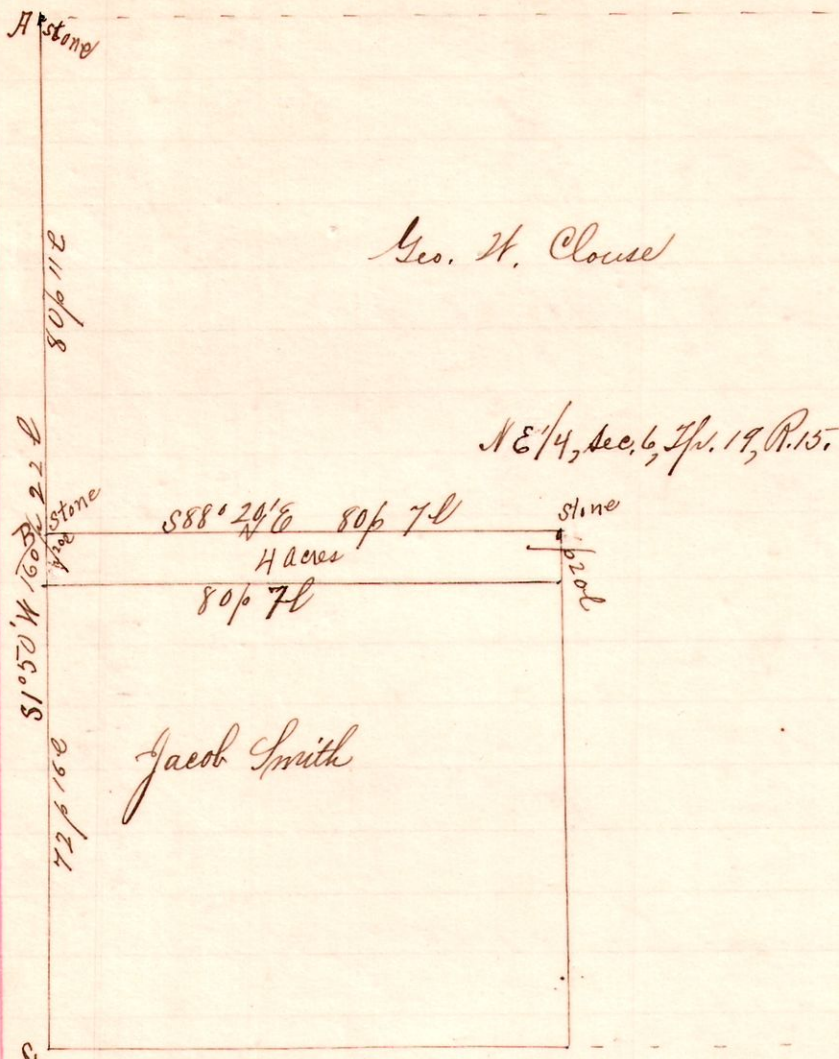


R 3/4 Sec 2  
15 19 6 N 65 W

No. 166.



*Notes*  
 "A" stone at the northwest corner of the northeast quarter of Sec. 6, Tp. 19, R. 15. witness Hickory 16869 1/2 14 40 we took as a new witness a Box S 58° E 25 links.  
 "B" the half quarter post on the west line of said quarter, a stone in the road, S 1° 50' W 80 1/2 p from A.  
 "C" the corner at the center of said section 6, we took as a witness a Swamp oak 24 S 70° W 17 1/2 chains  
 John Alluding, Christ. Spring  
 Washington Bell, W. H. Bartlett.

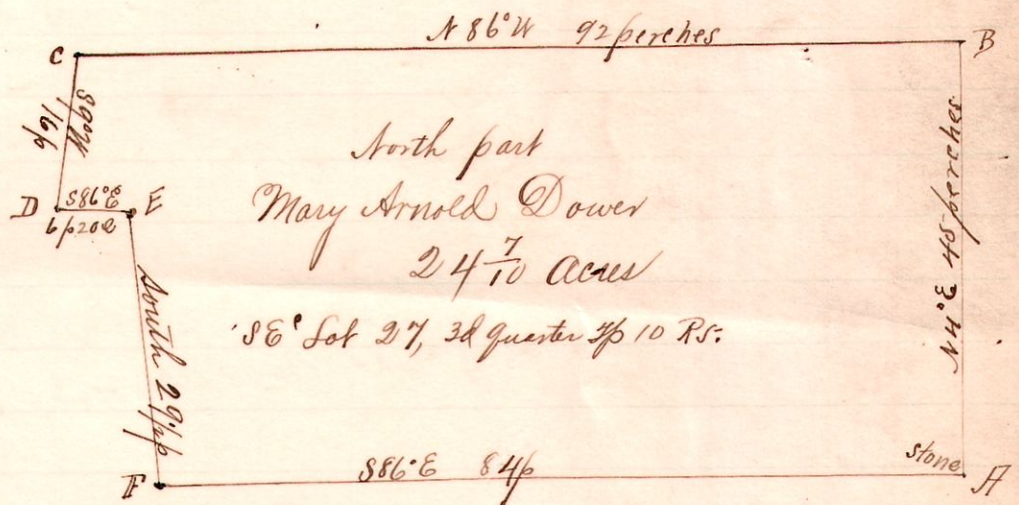
A survey made to determine the corners A B<sup>nd</sup> C, also 4 acres off of the north side of the southwest quarter of the Northeast Quarter of section 6 Tp 19, R. 15, sold to Geo. H. Clouse by Jacob Schmidt, March 10<sup>th</sup>, 1896.

Frank H. Genet, County Surveyor.

No. 167.

R 3/4 Sec 2  
5 10 3" 27 58°

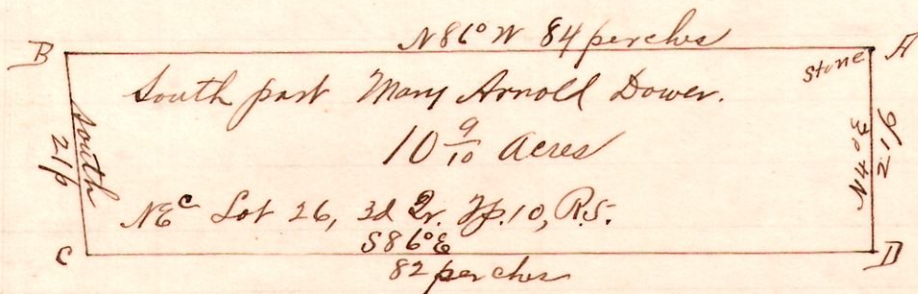
A. C. Fritchle  
 Joseph C. Summers Viewers  
 Frank H. Genet Commissioners



Surveyed by Order of the Court of Common Pleas, April 5, 1896.  
 Frank H. Genet, Co Surveyor.

No. 168.

5 10 3" 26 N 6°



*Notes*  
 "A" stone at the northeast corner Lot 26, 3d/4 Tp 10 R. 5.  
 "B" a post on the north line said Lot N 86° W 84 p from A.  
 "C" a post 21 perches south of B.  
 "D" a post on east line S 86° E 82 p from C<sup>nd</sup> N 4° E 21 perches to A.  
 chainmen

Lucas B. Korn<sup>nd</sup> J. C. Summers (exam)

Mary Arnold Dower as surveyed by order of the Court of Common Pleas, April 5, 1896.

Frank H. Genet, County Surveyor.