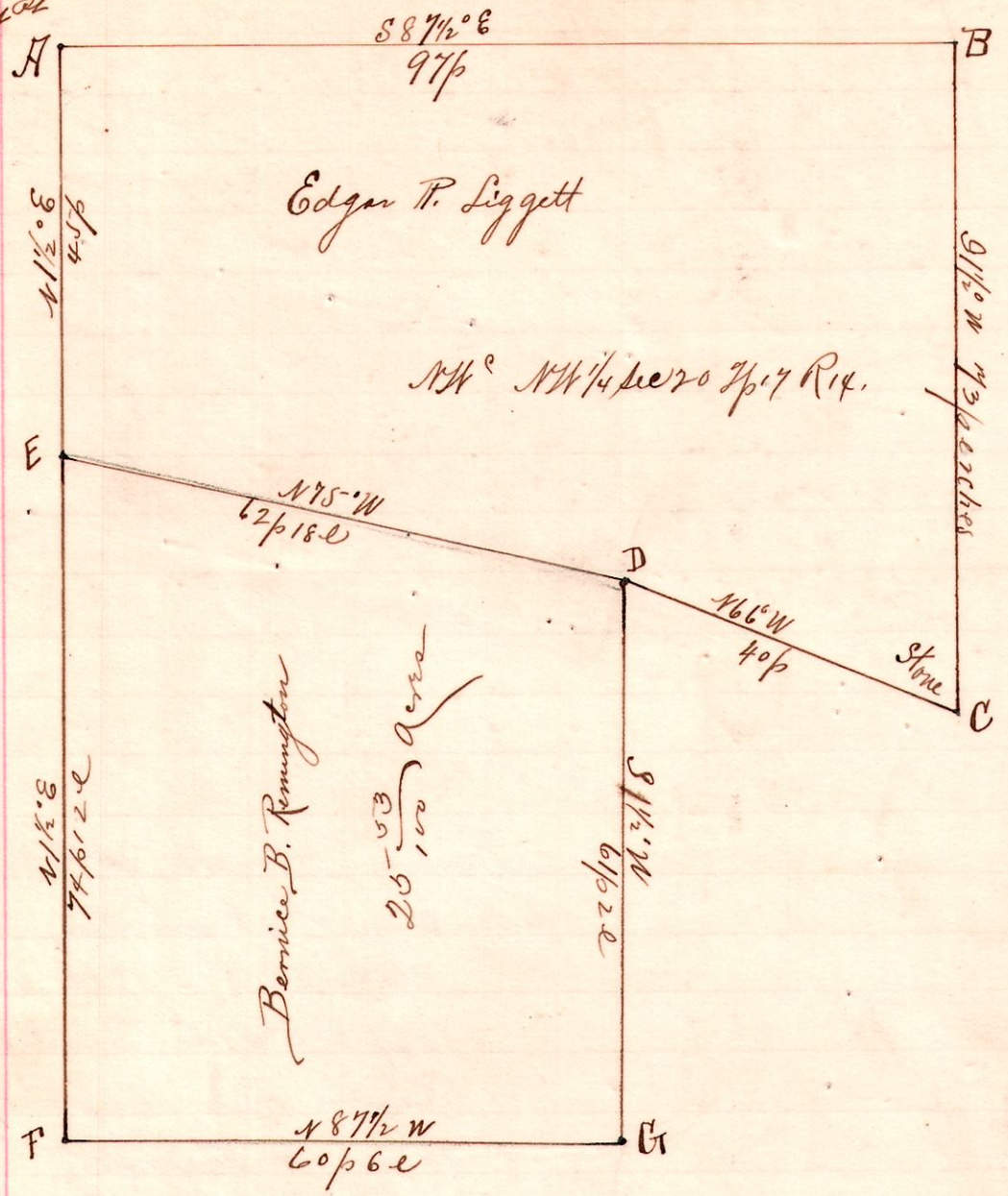


R 7p Sec 20 R14
14 17 20 NW NW

No. 175,



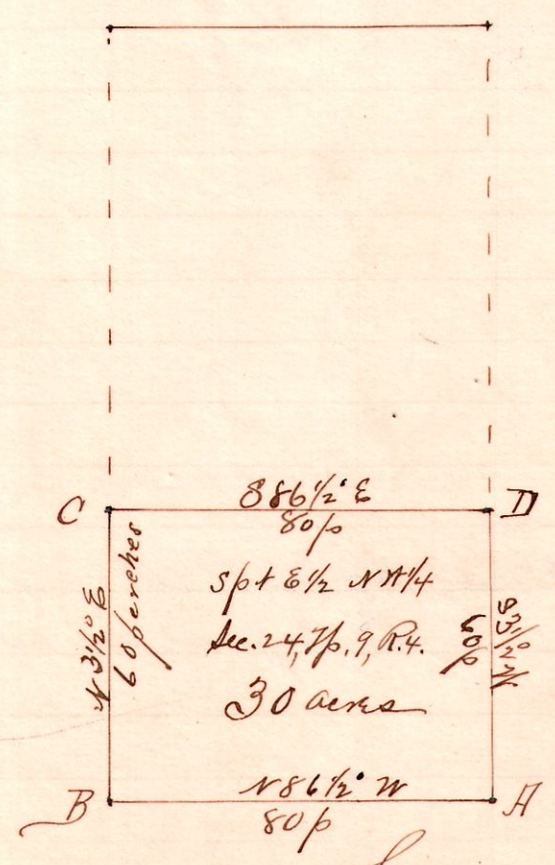
Notes
 "A," the Northwest corner of the Northwest quarter of True. Sec. 20 T17 R14
 "B," a post on the north line of said quarter 387 1/2° E 97p from A, marked in a Survey by DeLott; found his Book 6 3 6 1/2 W 29 (Stump decayed) took as new witnesses
 { Book 10 34 16 41 C (old)
 " 8 34 W 30 " (new)
 "C," (in DeLott Survey) established stone from Chestnut Stump, S 1 1/2° W 73 perches from B.
 "D," a post N 66° W 40p from C
 "E," post N 75° W 62p 18l from D. and N 1 1/2° E 45p to F

Surveyed for Edgar P. Liggett, Bernice B. Remington, et al, to relocate the corners B, C, D, E, F and H; also the lines BC, DE, and GF; July 14, 1896.

Frank A. Gunt, Co. Surveyor.

No. 176.

R 7p Sec 20 R14
4 9 24 NW SE



Commissioners
 William Hershberger
 Cornelius Bittkofer
 Frank A. Gunt

"H," the southeast corner NW 20 Section 24, T17, R14.
 "B," a post N 86 1/2° W 80p from A
 "C," " N 3 1/2° E 60p " B
 "D," " S 86 1/2° E 80p " C and S 3 1/2° W 60p to A.

Surveyed about Homestead for Franey Gerber, Sept. 4, 1896.

Frank A. Gunt,
 Co. Surveyor,
 Holmes Co.,
 Ohio.