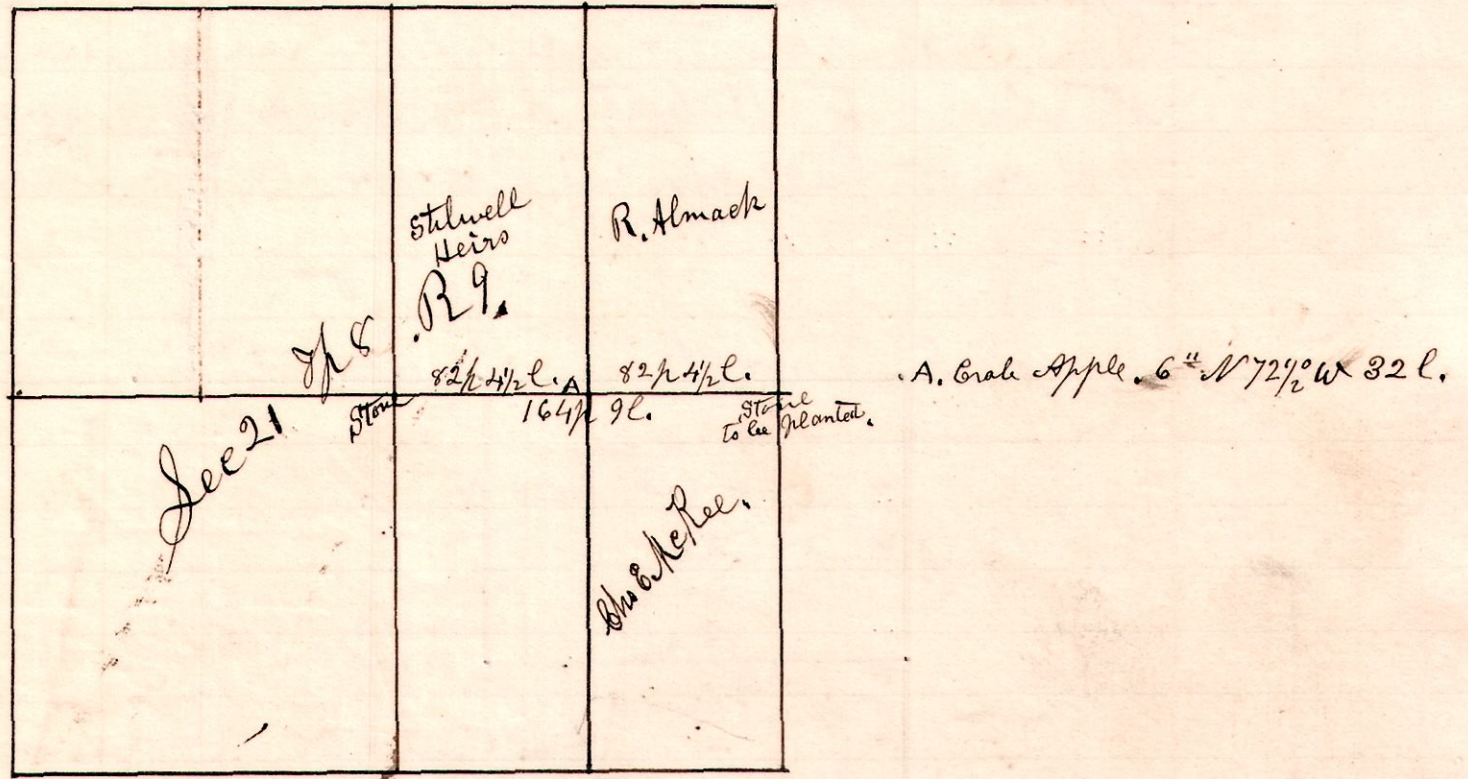


R S D  
9 8 21

A Survey made for R Almaek and C E McKee to establish the original corner of the north east corner of the south east quarter of Section 21, in Township Eight of range 9, the same being the center corner on the East line of said Section 21. Commenced at a stone corner, being the center of said section and ran and traced the original line east to the intersection of the East line of said section and established the corner. Witnesses present, R Almaek; C. E. McKee; Lidas Boney; Allen Boney; G. M. Logsdon; McClelland Loehard; Dan Stuber; Harrison Madden. Chain carriers, G. M. Logsdon, and McClelland Loehard.

No 196.



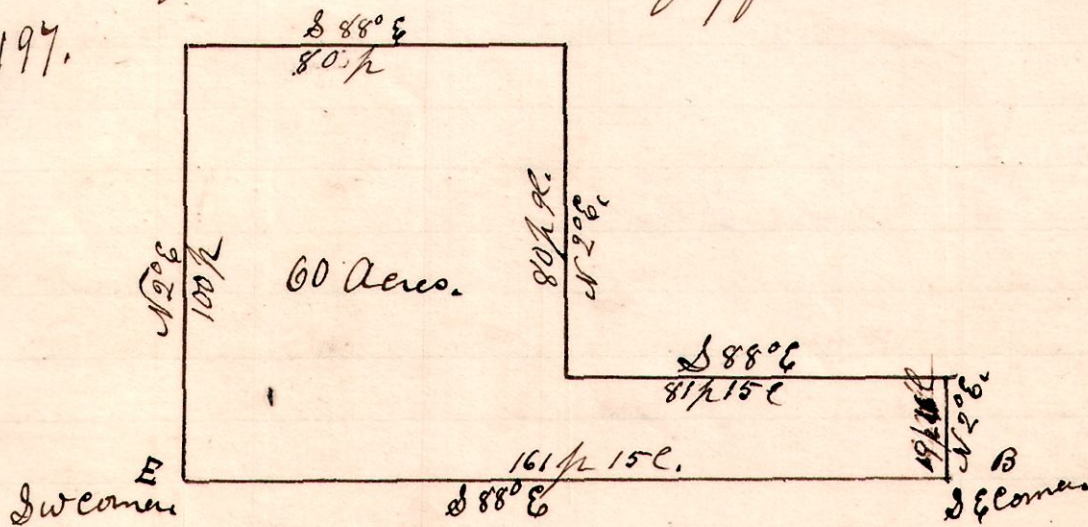
Surveyed Janing 11<sup>th</sup> 1898.

H. H. Robinson  
Deft. Surveyor

R S D  
11 15 34

A Survey made for G W Moyer on the 11<sup>th</sup> day of February 1898 to establish the Original South West and South East corner of the north east quarter of Section number 34, T 15, R 11, and to survey off 60 acres on South side of said quarter.

No 197.



Established the South west corner from a white oak tree which had been marked and noted in a survey originally made by Samuel Robinson, and at B by the stump of a large white oak plainly marked as the original tree called for in the original surveys. I then established the south quarter line between those two corners.

H. H. Robinson  
Deft. Surveyor