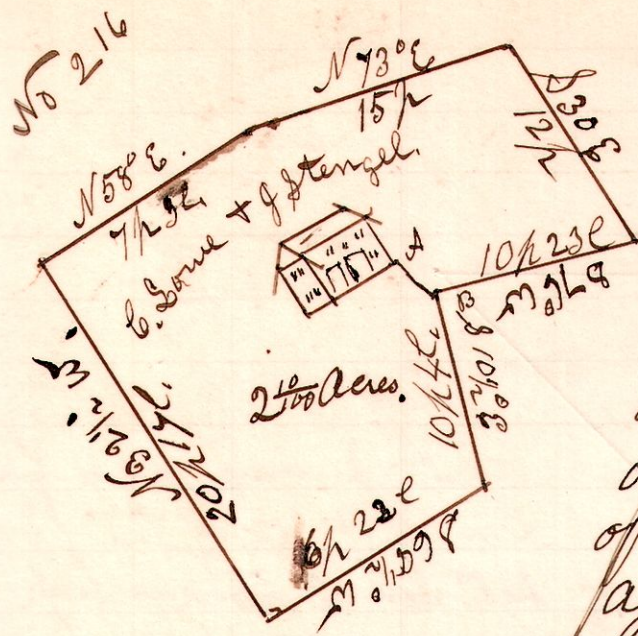


R J S  
11 14 3.

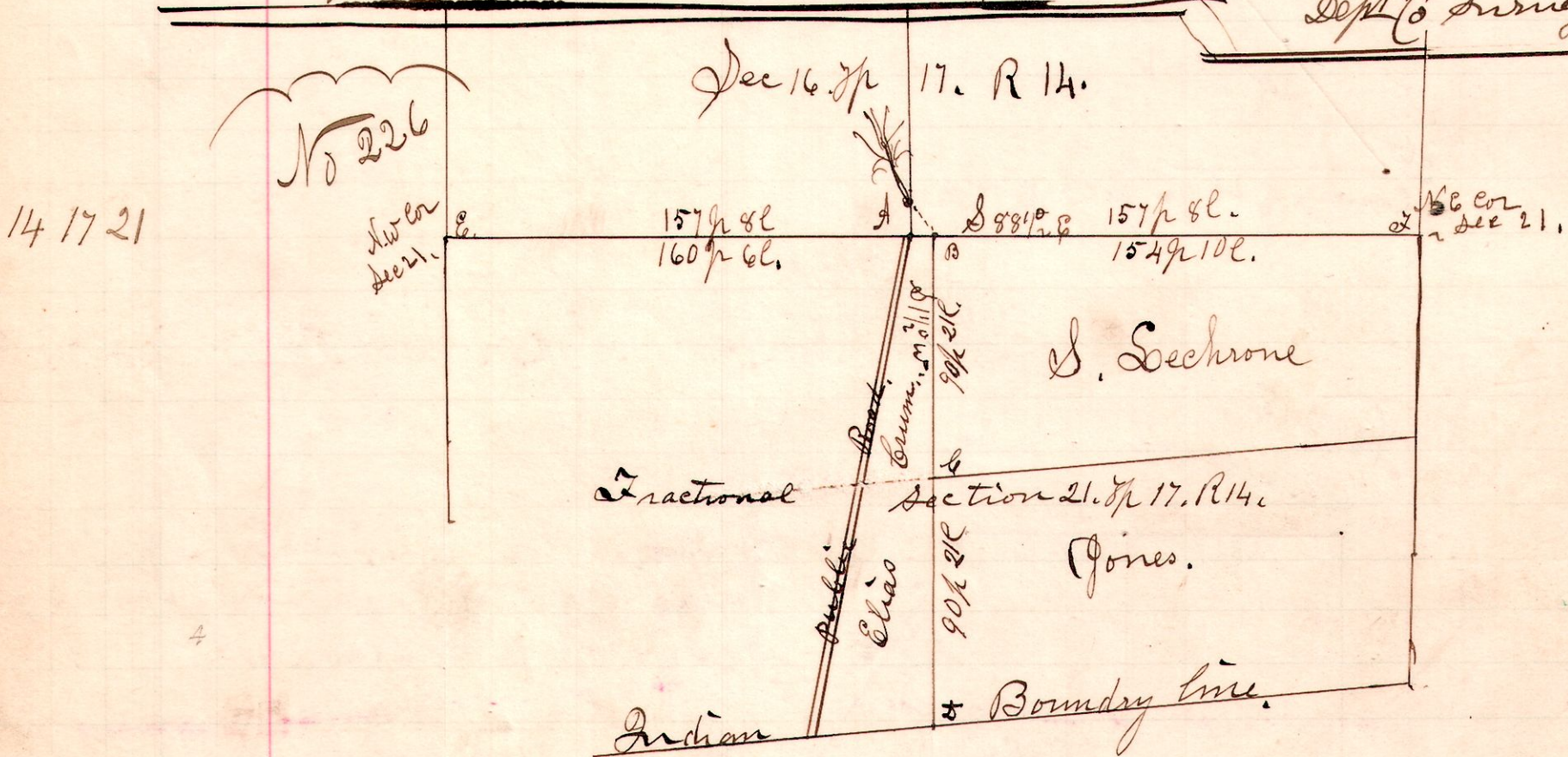


A. D. C. Cor Stone of Barn.  
Sta B. S 38° E, 3 1/2 ft from A.

A Survey made for C. Sowe and John Stengel, being part of fractional section 3, in T 14, of Range 11, being a tract of land around and on which the farm buildings stand, which are owned in common by said Sowe + Stengel

Sept 2<sup>nd</sup> 1898

H. H. Robinson  
Deft Co. Surveyor.



A legal survey made after 20 days notice to establish line B-D. and corners A. B. C.

The corner at A being gone, and the original witness trees gone. I ran the section line between section 16 and 21, to, and did the corner at A<sub>2</sub> by putting it equidistant from E & F, and on straight line between those two points.

I then established the corner B, by a survey made by Samuel Robinson in 1827, for two Critchfield Brothers who owned the section in common, and by deeds of present Owners which deeds correspond with said original survey made by said Samuel Robinson. I then ran the line B D, South 11 1/2° west, to the corner D which had been established by A. Johnson. Witness tree taken by me for corner "A" White Oak, 18" - N 1° E. 50 ft.

At corner B is a corner stone,  
At " F is W. Oak Stump the corner.

September 7<sup>th</sup> 1898.

Chas. Carrus  
Bhs  
Chs. - Thome  
Peckham.

H. H. Robinson.  
Deft Co. Surveyor.