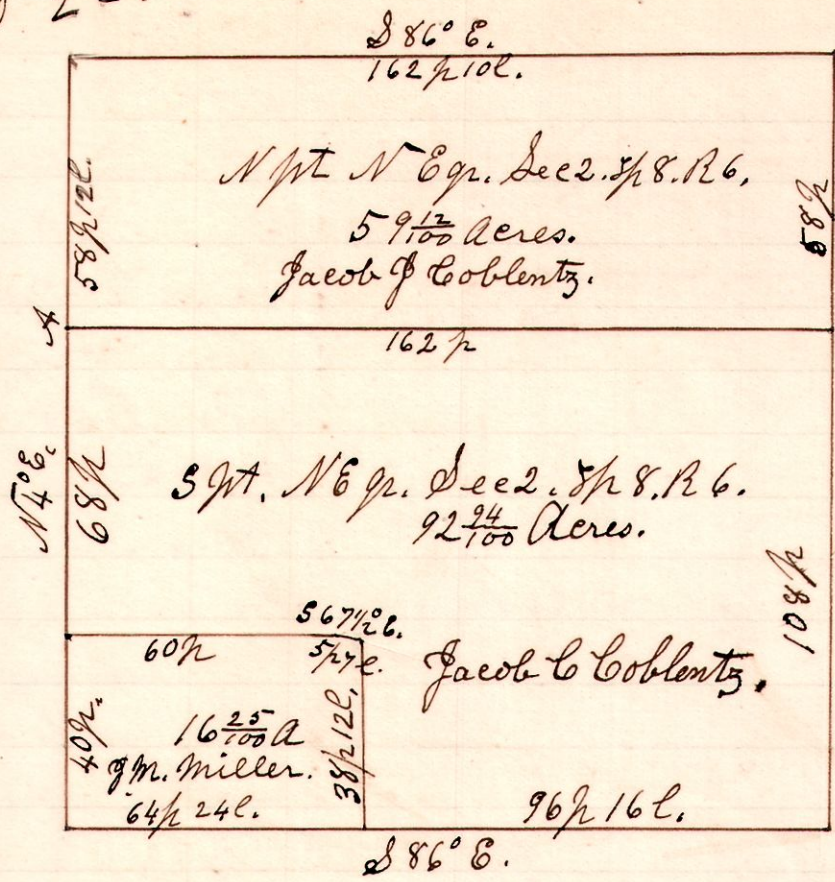


R 3 Sec 2
6 8 2 N6.

No 228

A. Beech-16.867°E.190.



Surveyed the north east quarter of Section 2. Township 8. Range 6, for Jacob J. Coblentz. Oct 20th 1898.

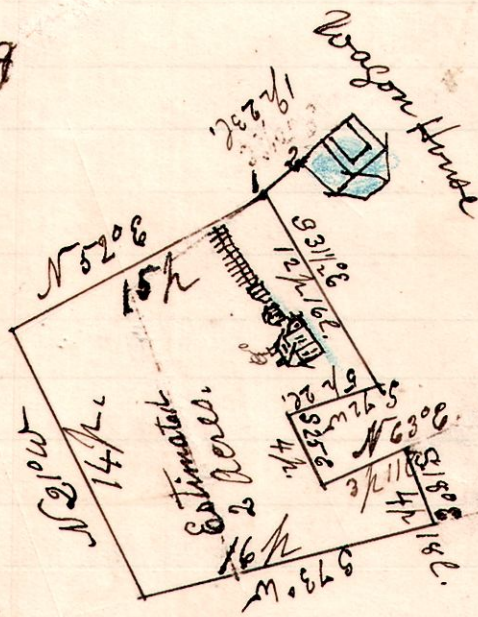
H. H. Robinson
Deputy Surveyor.

Chain Carriers.
Noah Coblentz.
Jacob C. Coblentz.

6 8 2 N6

No 229

The witness to No 1. the starting point is the north west corner of a wagon house, which bears N 50 1/2° E. 1 p 23 links.



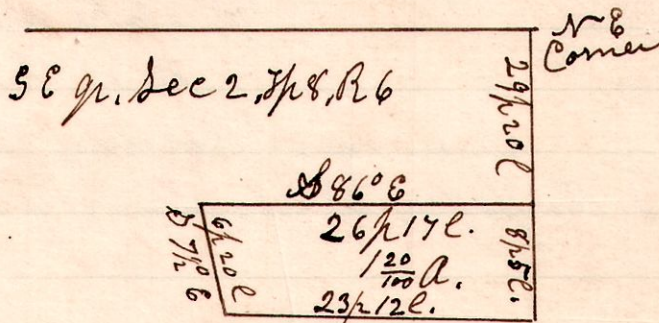
This piece of land is interior, and part of the north east quarter of Section 2. in Township 8 of Range 6, and is a reservation in said north east quarter

during the life time of Jacob J. Coblentz and Mary Coblentz. October 20th 1898.

Chambers Noah Coblentz.
Jacob C. Coblentz.

H. H. Robinson
Deputy Surveyor.

No 230



6 8 2 SE.

Surveyed the above, being the part of the north east part of the south east quarter of Section 2. Township 8 Range 6, for Jacob J. Coblentz. October 18th 1898.

H. H. Robinson
Deputy Surveyor.

Chain Carriers
Noah Coblentz
Jacob C. Coblentz.