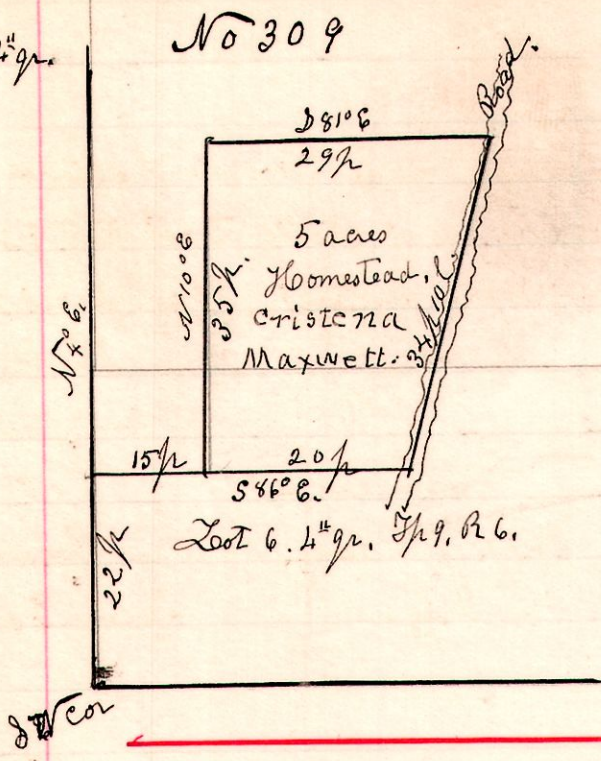


6 9 Lot 6. 4th gr.

No 309



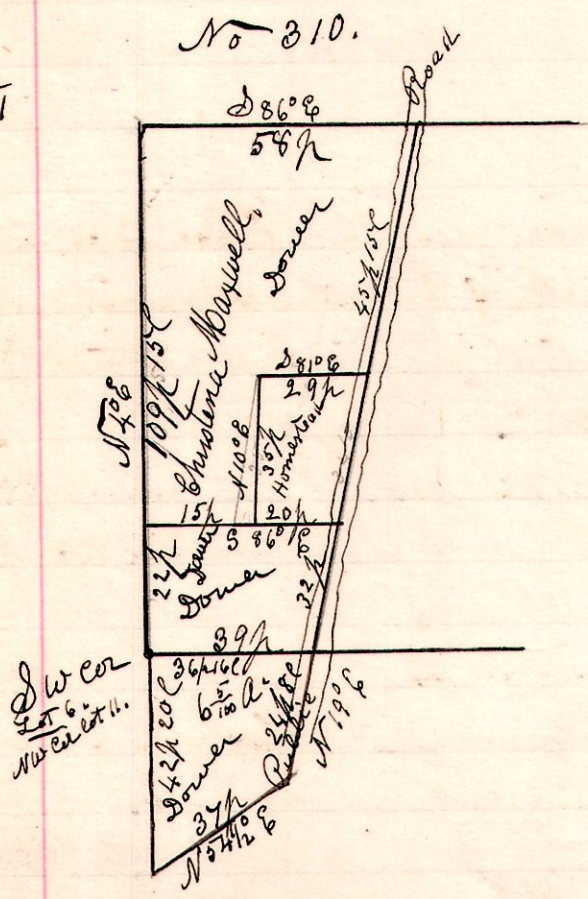
Homestead of Christina Maxwell as set off by order of Probate court, Feb 5th 1900, being part of lot 6, 4th gr T9 R 7. of the Connecticut Western Reserve School lands.

Chain Carriers.
P Hott
Theo Sherlock.

H. H. Robinson
Dept Co Surveyor

6 9 Lots 4th gr 6+11

No 310.



Dower of Christina Maxwell as assigned and set off by order of Probate court, being part of the west part of lot 6, 4th gr, T9, R 6, also 6⁵⁰⁰ acres out of the north west corner of lot 11, 4th gr, T9, R 6. Feb 5th 1900.

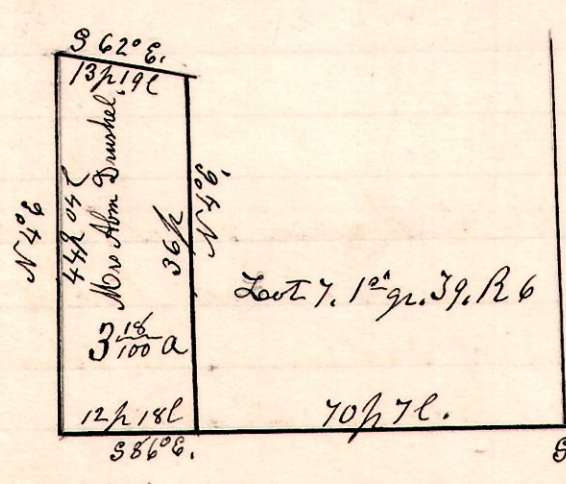
Chain carriers.
P Hott
Theo Sherlock.

H. H. Robinson
Dept Co Surveyor

Comms to assign,
H. H. Robinson
R. H. Hott
Theo Sherlock.

6 9 1st gr Lot 7.

No 311.



An amicable division of the Dower estate of Magdalena Johnson, by S B Maxwell, Wm J Boyd and J M Boyd, who were selected by Mrs Abm Drushel and Maple, the interested parties. The said parties selected to divide, by giving Mrs Drushel the one fifth, of the one third, assigned her 3¹⁰⁰ acres, as shown in plot.

Chain carriers. Wm J Boyd - J M Boyd. Arman. S B Maxwell

H. H. Robinson
Dept Co Surveyor.