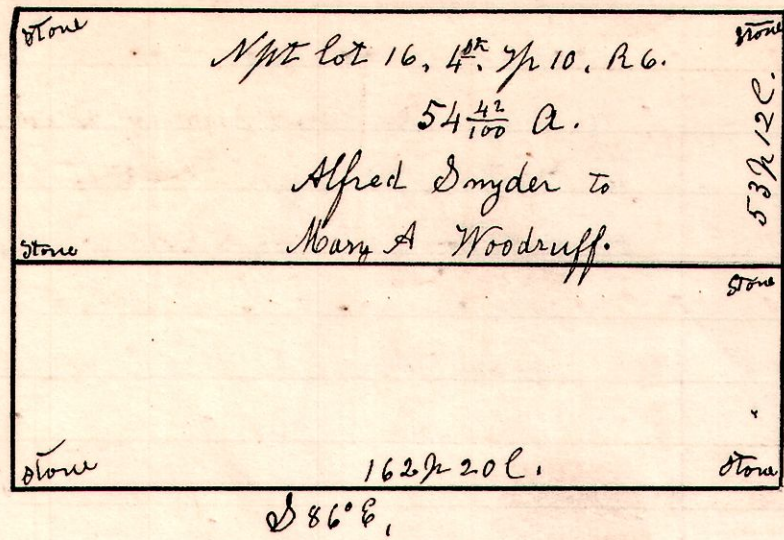


6 10 <sup>est</sup> 16. 4<sup>th</sup> gr.

No 294

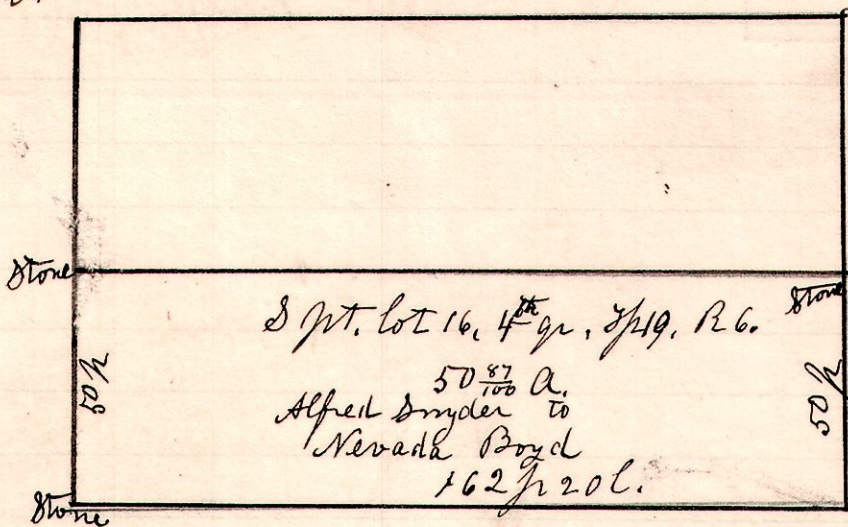


A survey made for  
 Alfred Snyder to divide lot 16  
 4<sup>th</sup> gr 10, R 6 between his  
 two daughters, Mary A Woodruff  
 and Nevada Boyd.  
 May 2<sup>nd</sup> 1901.

Chain carriers  
 Tom Metcalf + self.  
 H. H. Robinson  
 County Surveyor

6 10 <sup>est</sup> 16. 4<sup>th</sup> gr

No 296

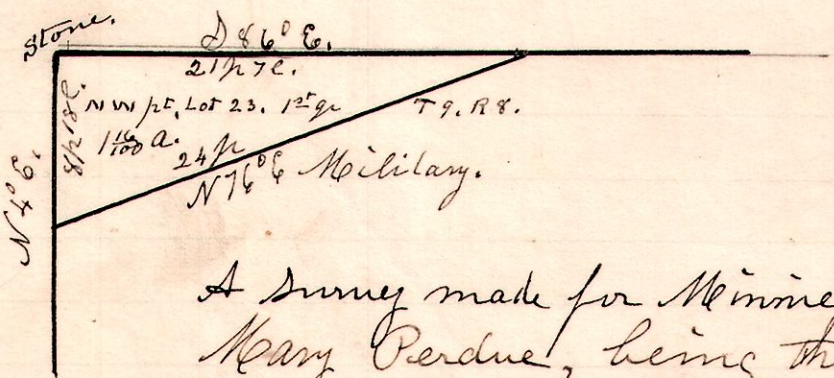


A survey made to divide  
 lot 16, 4<sup>th</sup> gr, 10, R 6, for  
 Alfred Snyder, between  
 his two daughters Mary A  
 Woodruff and Nevada Boyd.  
 May 2<sup>nd</sup> 1901. H. H. Robinson  
 Co Surveyor

Chain carriers,  
 Tom Metcalf  
 + H. H. Robinson.

8 9 <sup>est</sup> 23 12<sup>th</sup> gr

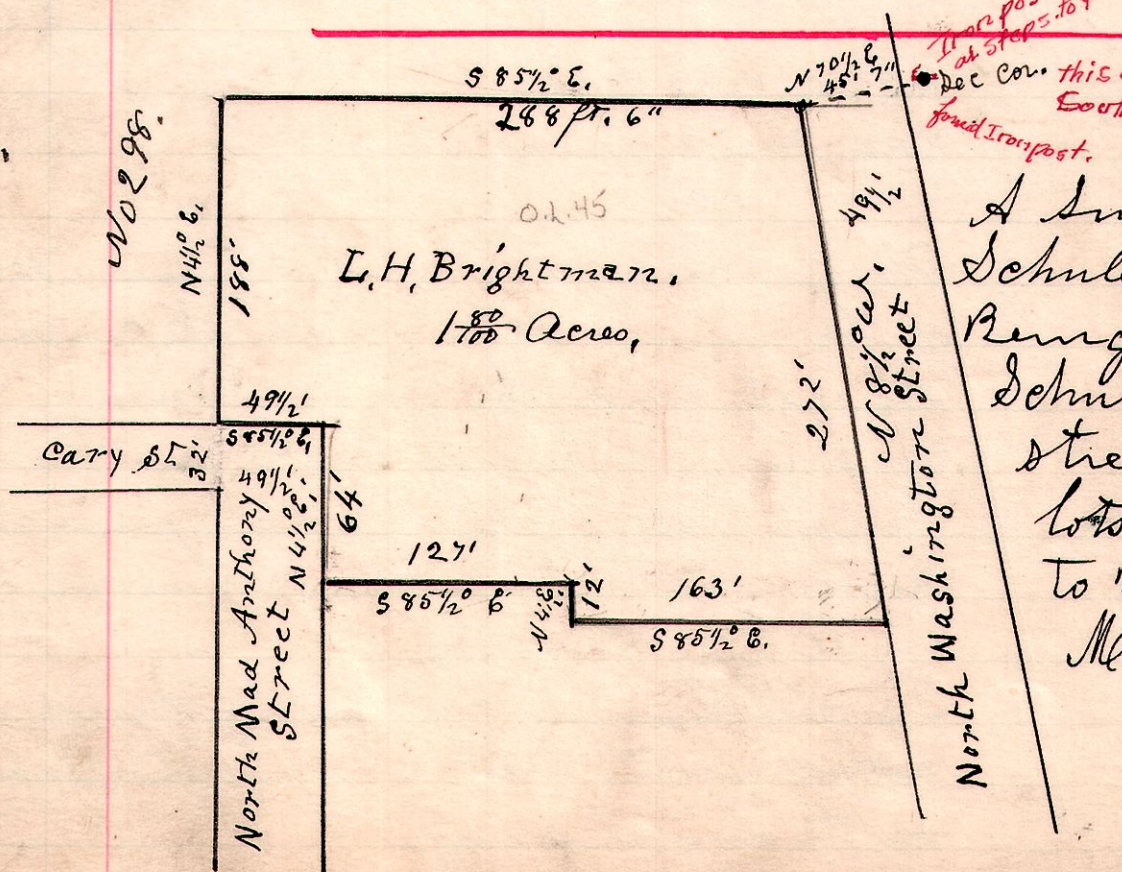
No 297



A survey made for Minnie Allison and  
 Mary Perdue, being the north west part  
 of Military lot No 23, in the first quarter,  
 in Township 9, of Range 8.

May 3<sup>rd</sup> 1901. H. H. Robinson  
 Chain carriers. County Surveyor.  
 Jas. Finney, Thos Meiler

Millersburg



*near post to pole  
 at steps to gate  
 Dec Cor. this Cr. Sec. corner is 168.3 feet west of the  
 South West cor. Lot. 46 School Land.  
 found Iron post. WLR-1920.*

A survey made for Hannah  
 Schuler & L. H. Brightman.  
 Being what is known as the  
 Schuler lot on north Washingto  
 street, and being part of out  
 lots 6-7-8. of original out lots  
 to Millersburg Ohio.  
 May 7<sup>th</sup> 1901. H. H. Robinson  
 County Surveyor.