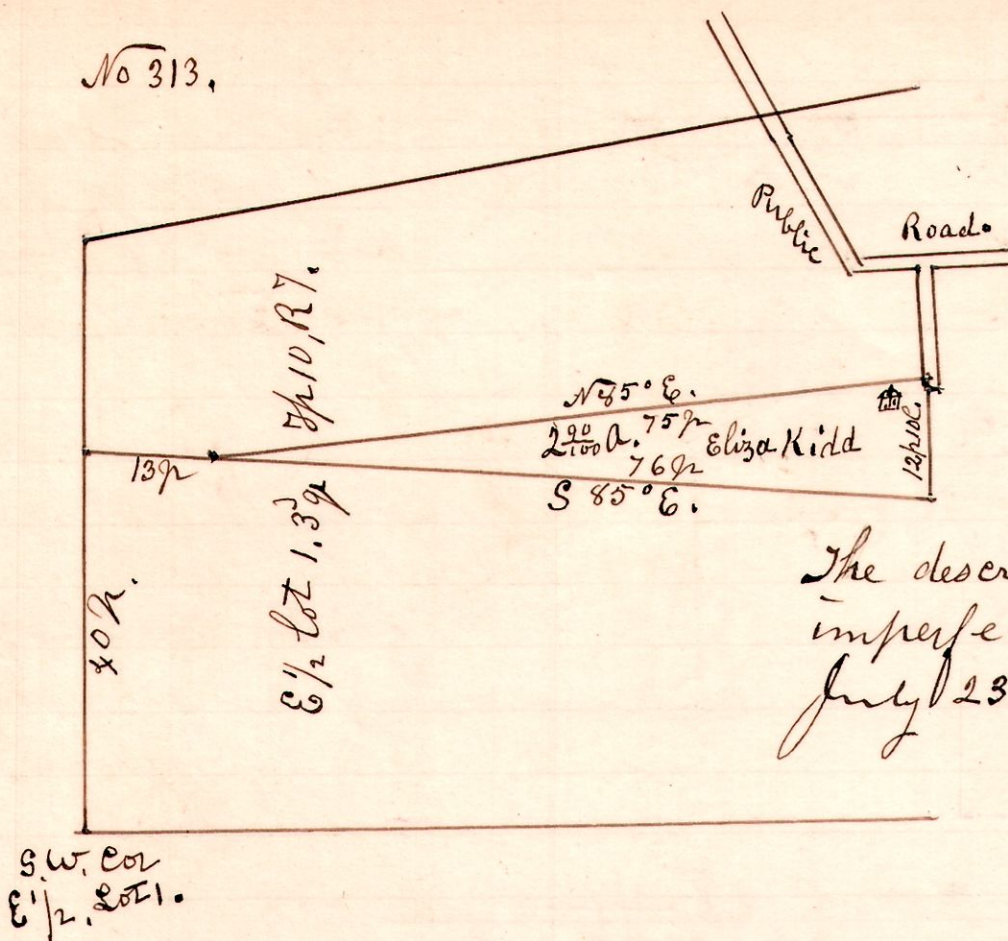


7 10 39. lot 1, 1/2

No 313.

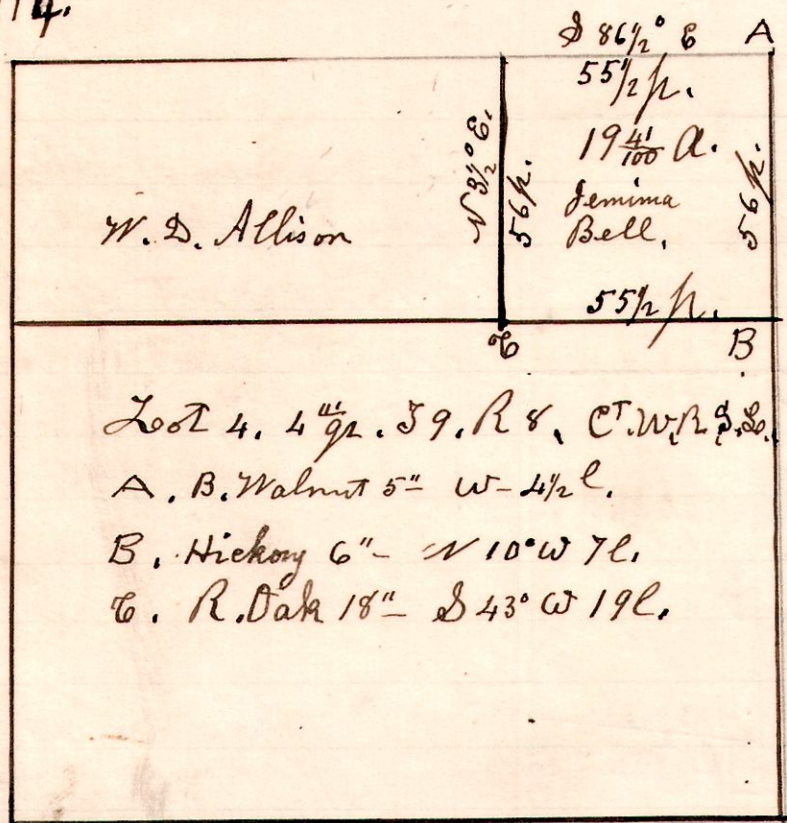


A Survey made by order of Probate Court, to locate and get description of land belonging to the Estate of Eliza Kidd, dec'd.

The description in deed being imperfect, and uncertain.
July 23rd 1901.

H. H. Robinson
County Surveyor

No 314.



A Survey made for W. D. Allison being 19⁴¹/₁₀₀ Acres in the North East corner of Lot No 4, in the 4th quarter, in Township 9 of Range 8. of the Connecticut western Reserve School Lands.

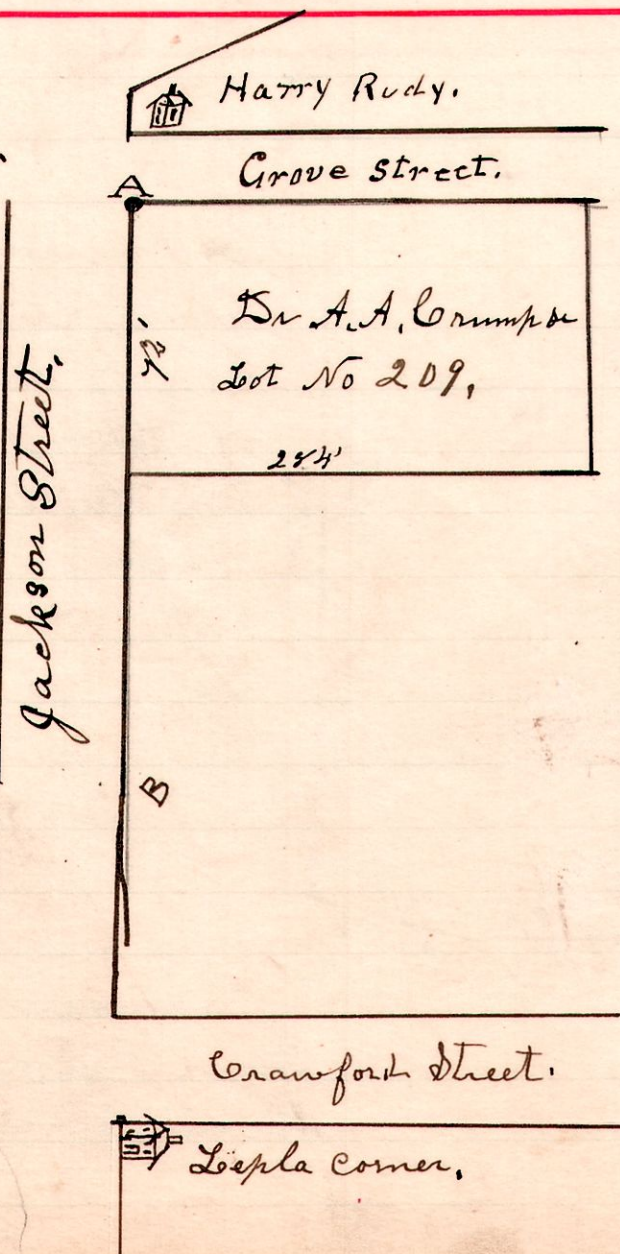
August 9th 1901.

H. H. Robinson
County Surveyor.

Chainman, S. L. Allison.
W. D. Allison.

Middletown.

No 315.



A Survey made for Harry Rudy, to establish the corner "A" the corner having been lost by the excavating for a sewer at that point. Planted corner stake, and took witness. Electric light pole N 11 1/2. Hitching post 19'.

August 13th 1901. H. H. Robinson
County Surveyor.