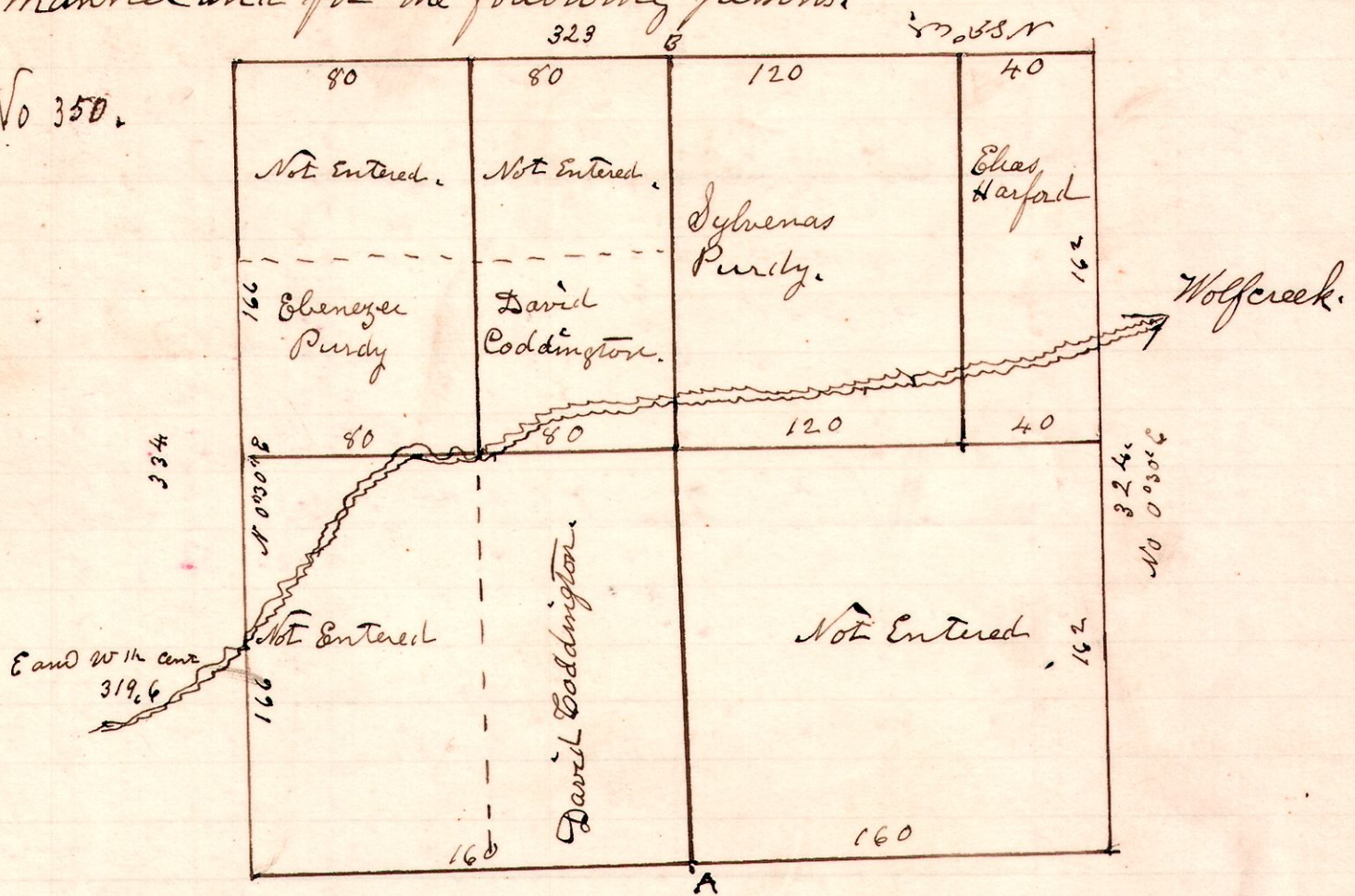


8 8 17.

January 16<sup>th</sup> 1835. Surveyed Dec 17 in 78 of R. 8. in the following manner and for the following persons.

No 350.

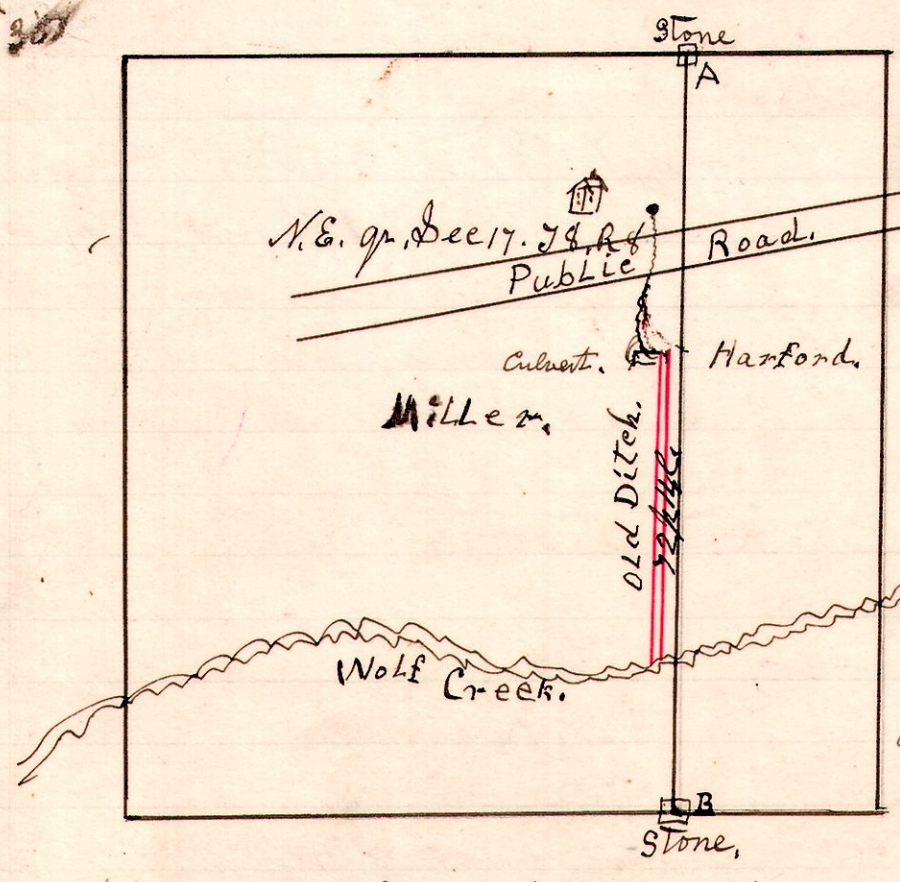


Stones planted at the corners.

I certify the above to be a copy of plat of survey made by Samuel Robinson January 16<sup>th</sup> 1835. The above plat is made a matter of record for the reason the original was used as evidence in common Pleas Court in the case of Harford vs Fry et al, and has to be used to day in Circuit Court in same case, and lest the original plat be lost, I deem it of sufficient importance to place it on record.  
November 19<sup>th</sup> 1906  
H. H. Robinson  
County Surveyor

8 8 17 N<sup>o</sup>

No 350



A Survey made for Newton Miller, being the location of the line A B, the same being in dispute in court proceedings in case of Harford vs Miller. In running a straight line from A to B, the same being the line in dispute, and the property line between the disputants. I found the true line to be from 3 to 5 feet East of the old Ditch,

which old Ditch is on the east side of a private road of Fry and Neal across the Miller land. This line A B, is the original line made by survey of Samuel Robinson in 1835. for Sylvanus Purdy and Elias Harford.  
Nov 20<sup>th</sup> 1906  
H. H. Robinson  
County Surveyor  
Chambers, Flag men  
E. P. Allison No. W Purdy  
W. L. Purdy, F. N. Gamble