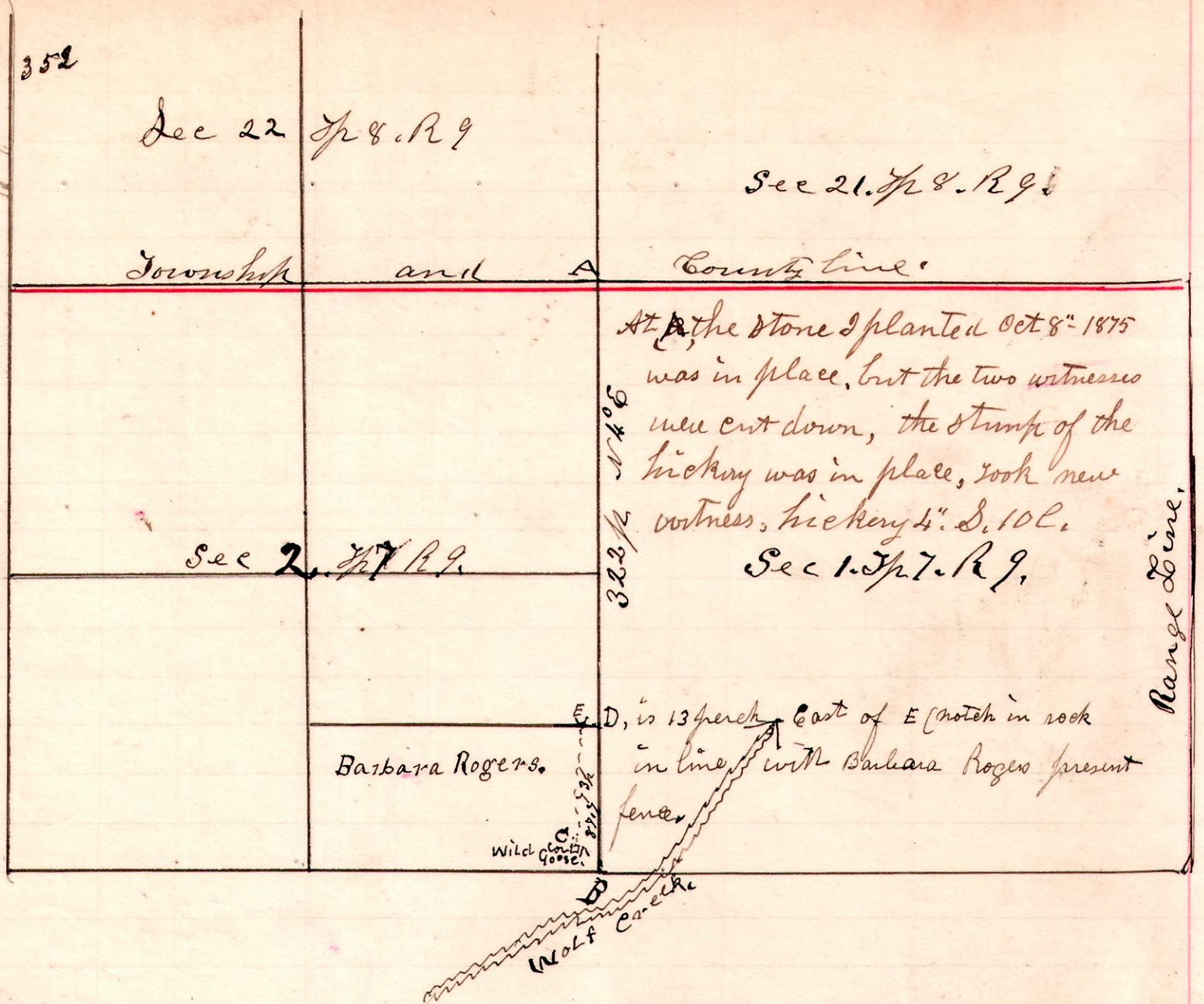


9. $\frac{7}{7}$ $\frac{21}{2}$

No 352



A survey made for Barbara Rogers to locate the true and original corner at B, it being the corner of sections 1-2-9-10. There is a stone at C, which has for years been called the "Wild Goose" corner, because it has always been unsatisfactory, by reason of not at all conforming to the Government field notes, and notes taken by the original Government Surveyors. In 1875 I established the corner A, being the corner of sections 21+22, Tp 8. R 9, Holmes County, and sections 1+2 Tp 7 R 9, in Coshocton County. I established and planted a stone corner from the original field notes and one of the original witness trees which was standing, but dead and decayed, and is now gone. I then took witness, Hickory 4" S. 10 E. I then ran South 41° West, 322 perches, the distance called for in the original field notes of Government Survey, and planted a stone corner, and took witness - Cut notch in rock N 76° West, 49 E. - Jack Oak 20" North 25° West 5 perches & 7 links. The section line being 13 perches and 2 links east of "Wild Goose" corner stone set by Clem Reamer. The section corner stone I set being 14 perches & links south of fence running east from wild Goose corner.

November 26th 1901.

H. H. Robins
County Surveyor of
Holmes County

Chain Carriers.	Marker,
J. C. Hawkins,	G. J. Hawkins.
G. W. McKee	Flagman
	E. J. Hawkins.