

No 429

5 8 25 EPT

A Survey made for the administrator of the estate of Mary C Hoover, being part of the east part of the East half of the East half of Section 25, in Township 8, of Range 5.

August 25<sup>th</sup> 1902

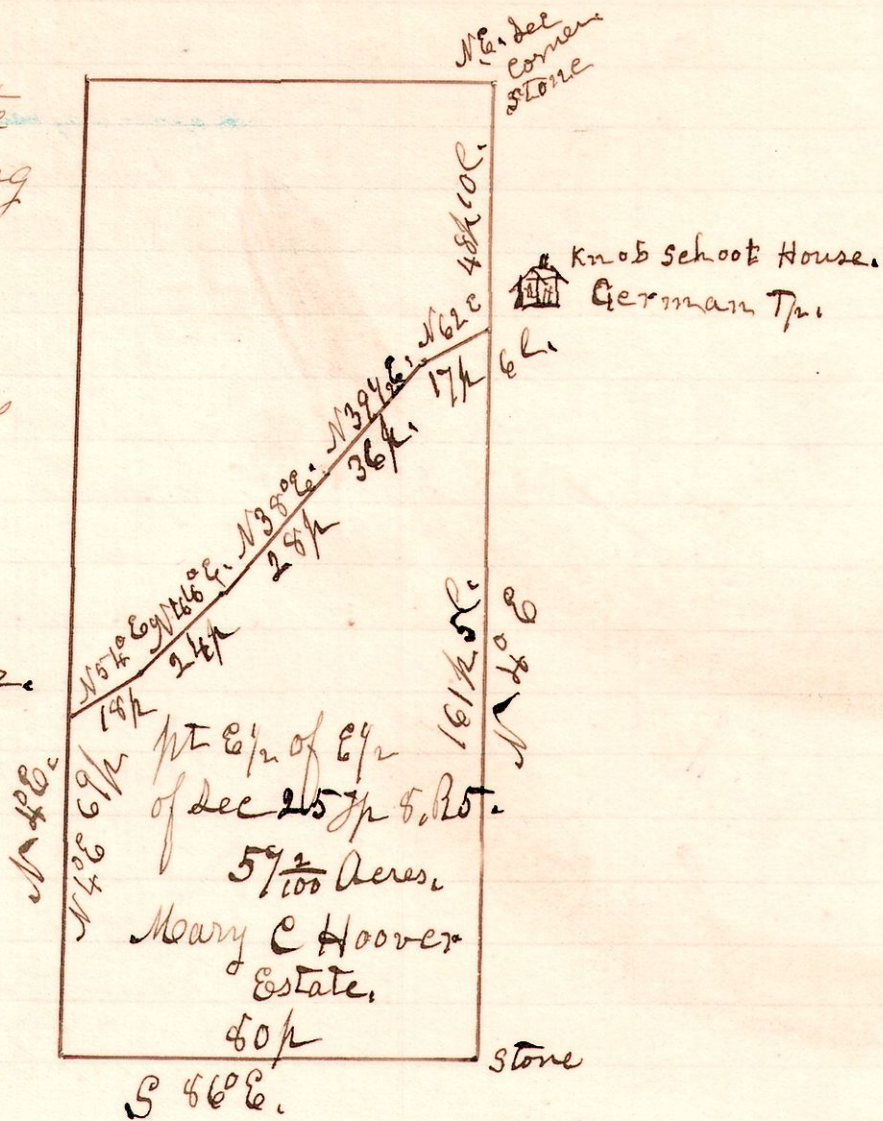
H. H. Robinson  
County Surveyor.

Appraisers.

H. H. Robinson,  
S. B. Kerstetter,  
J. P. Lorenz

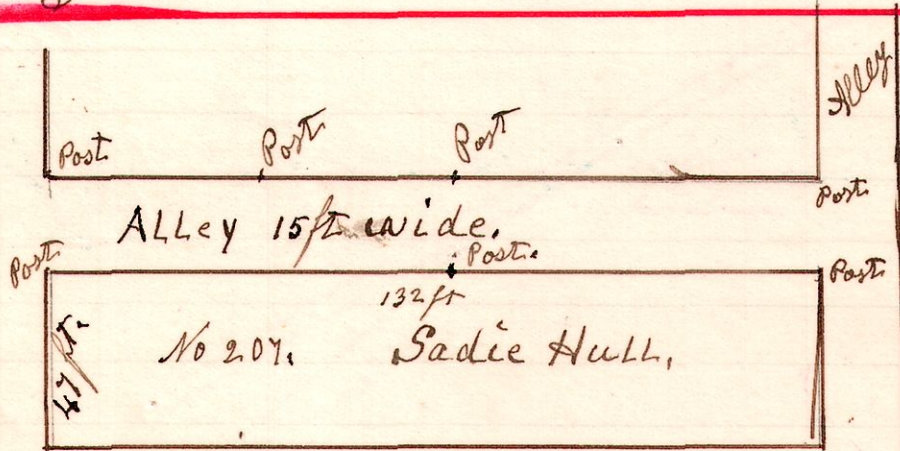
Chain Carriers.

S. B. Kerstetter,  
J. P. Lorenz.



Millenburg No 430

Jackson Street



Measure Carriers,  
Guy R Palmer,  
H. H. Robinson

A Survey made for W. S. Hull to locate the lines of a public Alley adjoining on lot No 207, on the East. I located the line on East west sides of the Alley, and drove posts along lines of same.

August 25<sup>th</sup> 1902

H. H. Robinson  
County Surveyor

7 9 lot 36 12

Public Road No 431



Balser Reichart

S 85 1/2° E. 56 ft

Anna Ritt

stone set from witness trees, previously taken by me on former survey.

Chain carriers. Guy R Palmer, H. H. Robinson

A Survey made for Anna Ritt to locate the line between land owned by her on one side, and Balser Reichart on the north side. The same being a division line through lot 36, in the 1/4 quarter, in Township 9 of Range 7, I surveyed the line and set Stone in the road, and drove posts along the line.

August 26<sup>th</sup> 1902

H. H. Robinson  
County Surveyor