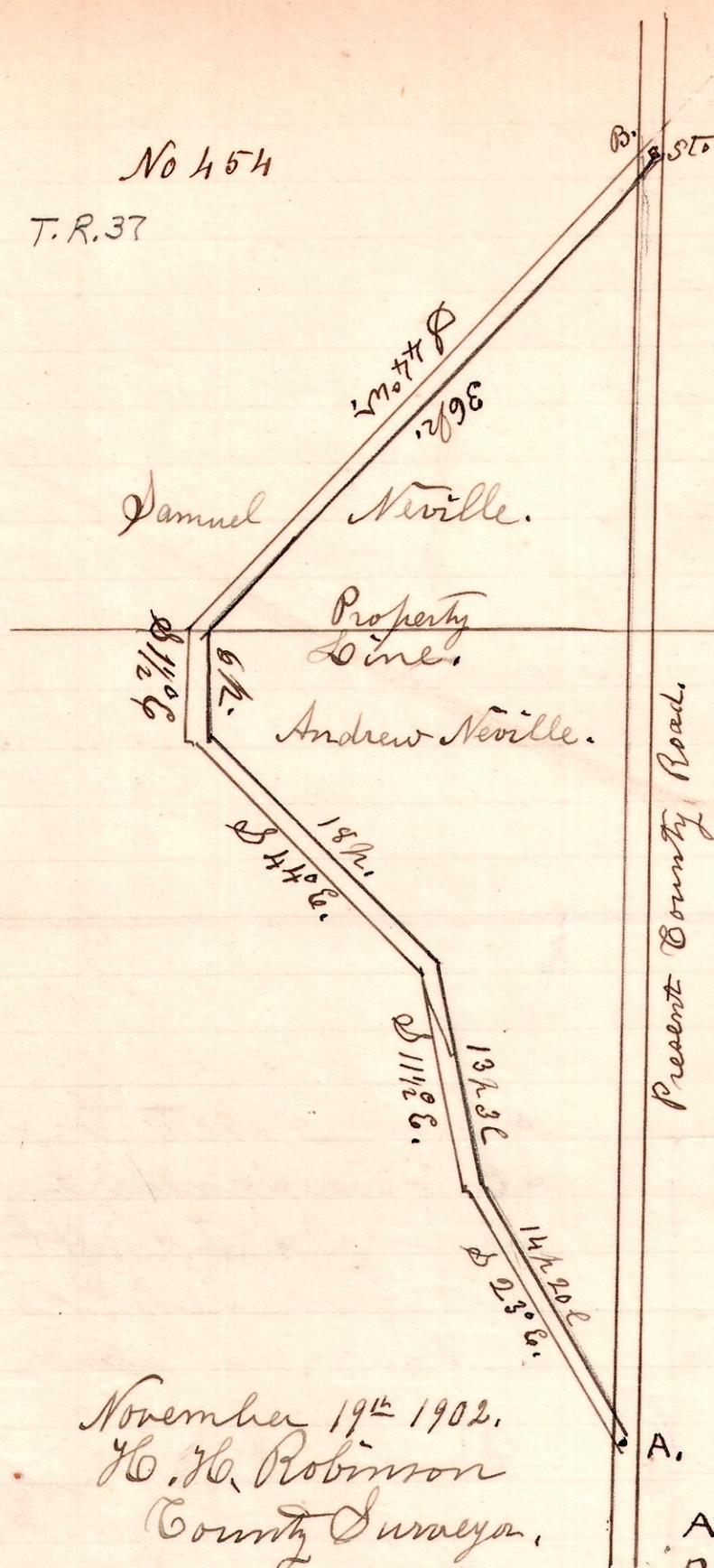


8 8 23

No 454  
T.R. 37



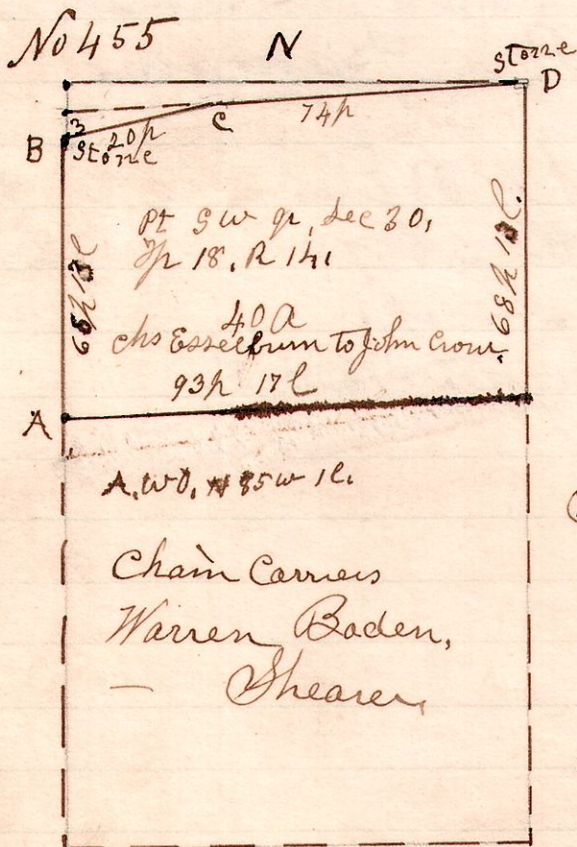
A survey made of alteration of a county Road petitioned for by John Q. Duncan and others, commencing at a stone in the public Road; said stone being the north east corner of the south west quarter of the north west quarter of Section 23 in Township 8, of Range 8; Thence as shown by plat, to end in the public Road with witness as shown on plat at A.

Chain carriers,  
W. P. Waltman,  
J. B. Lepley,  
Marker,  
Wm. Duncan.

November 19<sup>th</sup> 1902.  
H. H. Robinson  
County Surveyor.

A. White Oak: 8" S 57° E. 1 1/2 19l.  
B. Stone in road, the NE cor. of SW qr. of NW qr. of Sec 23, T8R8.

14 18 30



A survey made for John Crow, to locate a 40 acre tract of land sold by Chs Esselburn to John Crow. Chs Esselburn was present and showed me a stone from which to commence to measure off the 40 acres sold by him to John Crow. Said stone was on the south side of a private road on or near the west line of the south west quarter of Section 30 (fractional) in Township 18, of Range 14. The true or original corner is uncertain, as it was originally in Odells Lake, and no bearing trees were taken as per original field notes.

This survey was made to show, or locate 40 acres south, starting from a stone, the corner (north east) and a certain stone at or near the west line of said quarter, but not the north west corner of said quarter. Line B.C.D.  
December 3<sup>rd</sup> 1902.  
H. H. Robinson  
(South of Court line 1 1/2 1902)