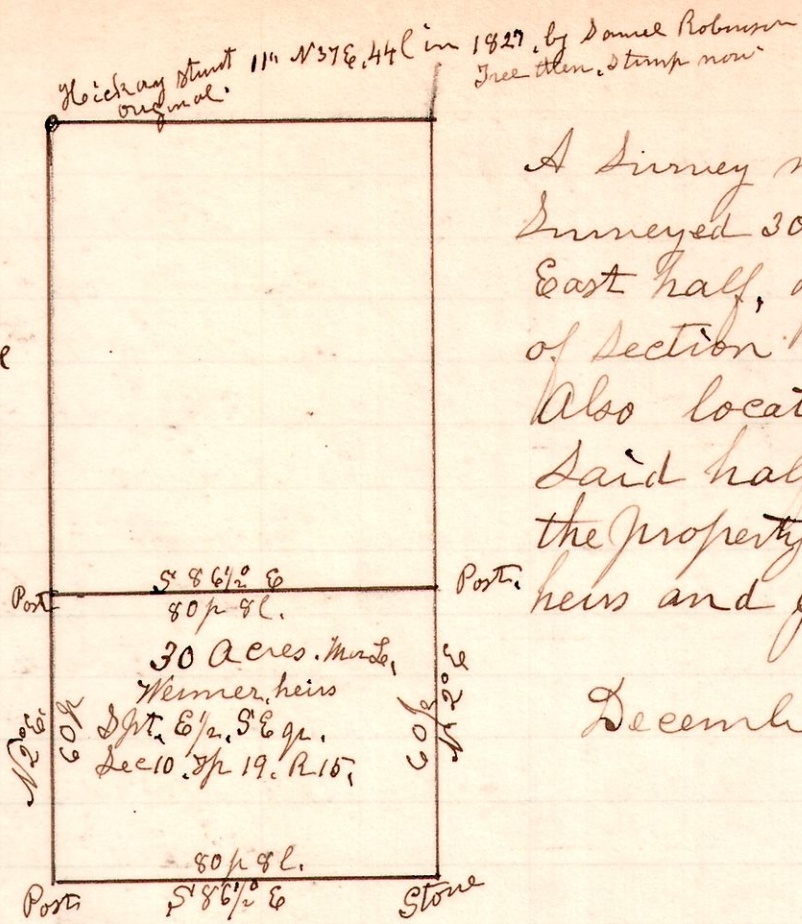


15 14 10 SE

No 456



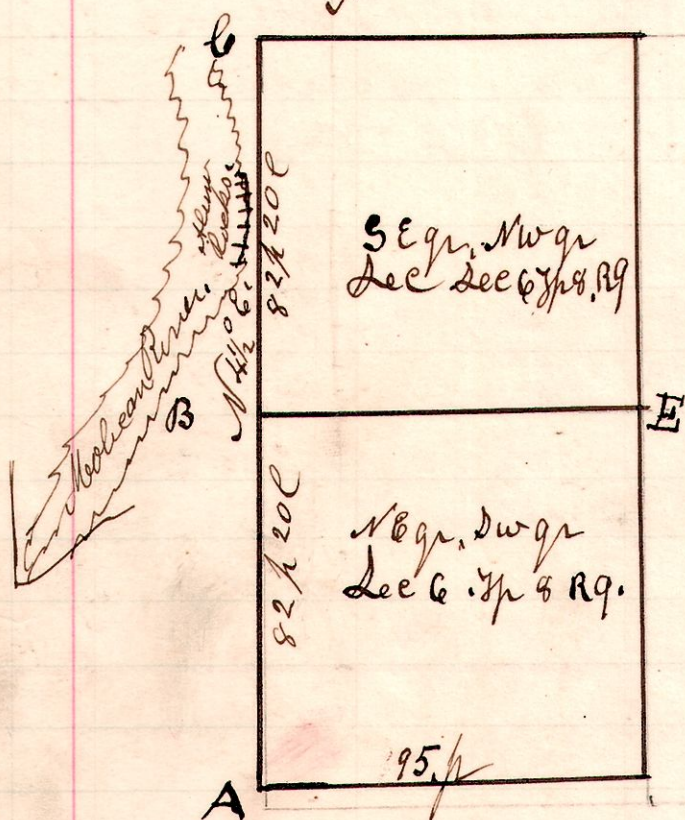
A survey made for Werner heirs and Jeffries heirs. Surveyed 30 acres off the South end of the East half, of the South East quarter of Section 10. in Township 19. of Range 15. Also located the line on west of said half quarter said line being the property line between said Werner heirs and Jeffries heirs.

December 4th 1902

H. H. Robinson
County Surveyor

9 8 6

No 457



A survey made to locate the line A.C. between lands of Delano Robinson, and August Harty + Jeff Peterson. near Alum Rock on Mohican River, in Richland Township

December 23rd 1902.

H. H. Robinson
County Surveyor

Chain carriers
Bert Zimmerman,
Ben Duncan.

Flag
Jeff Peterson,
Alie Money,
Marker

Present
Delano Robinson.

Witness

- A. Chestnut 24" - N 26° E. 36 l.
- B. B. Oak 8" S 53° E. 45 l.
- C. Maple 6" - N 36° W. 22
- " Pine 5" - S 36° E. 22

August Harty