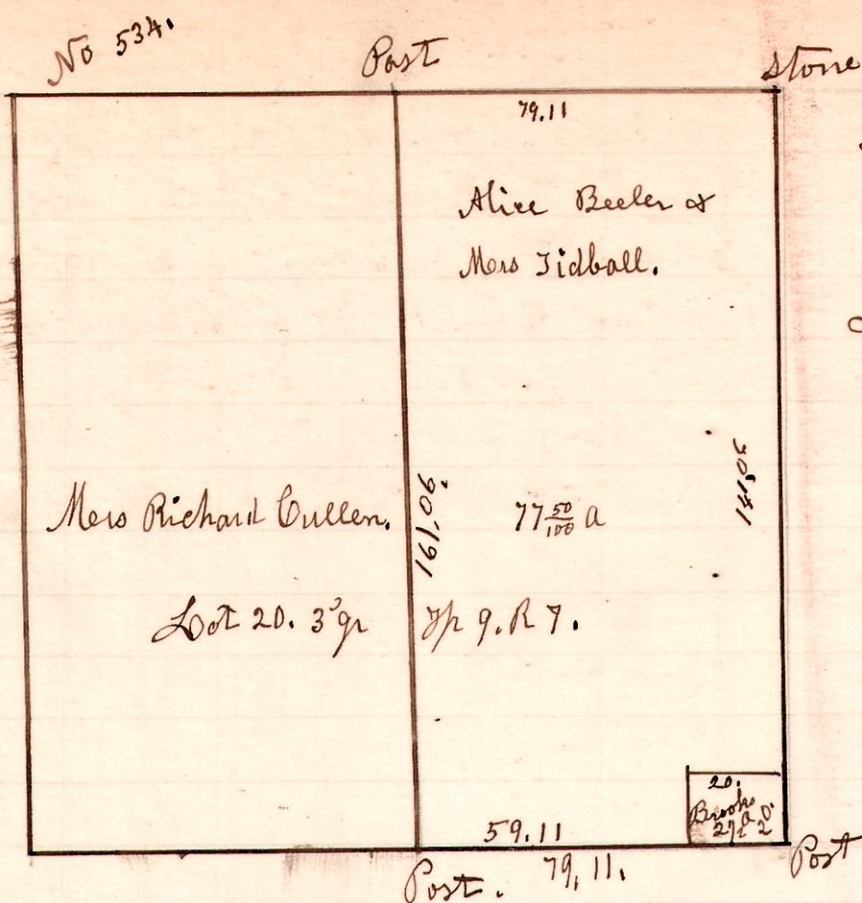


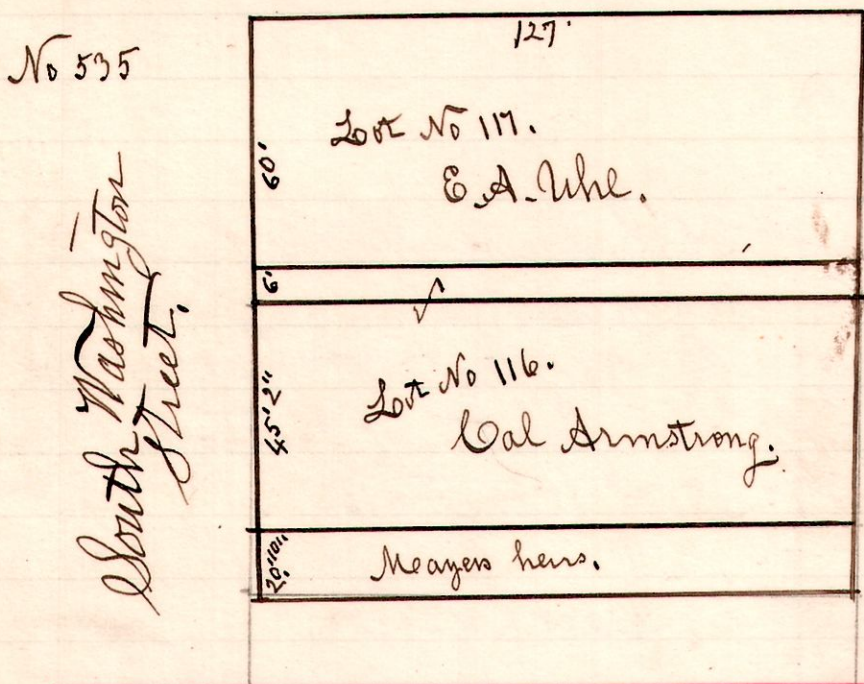
7 9 lot 20 3<sup>rd</sup> q.



A survey made for Alice Beeler, and others, being a division of Lot 20, in the 3<sup>rd</sup> quarter of Township 9 of Range 7, School Land, October 21<sup>st</sup> 1903.

H. H. Robinson  
County Surveyor.

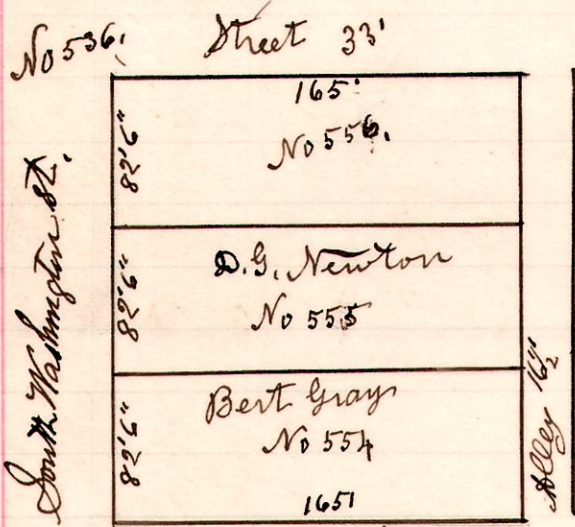
Millersburg.



A survey made for E. A. Uhl and Cal Armstrong to locate property lines of lots 116 & 117 in Millersburg Ohio. Nov 2<sup>nd</sup> 1903

H. H. Robinson  
County Surveyor.

Millersburg O



A survey made for D. G. Newton to locate lines of lots 554 and 555, in the town of Millersburg Ohio. Nov 9<sup>th</sup> 1903.

H. H. Robinson  
County Surveyor

14 18 32 Sec



A survey made for Ebert Way being the west part of the south half of Section 32, in Township 18 of Range 14. March 17<sup>th</sup> 1904

H. H. Robinson  
County Surveyor