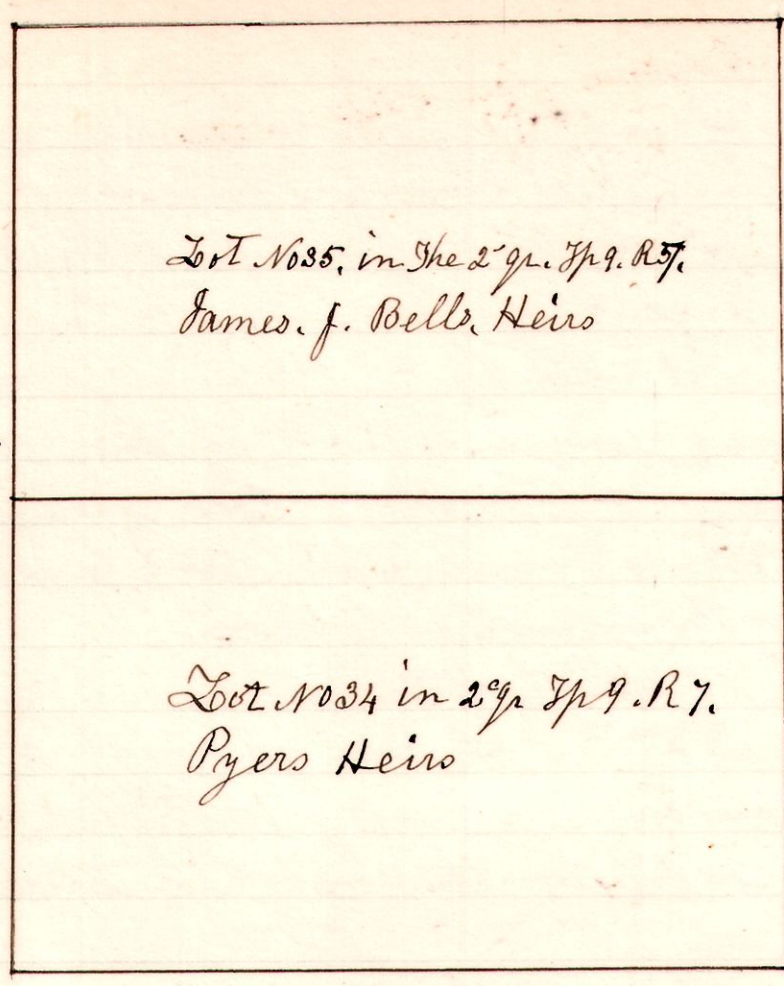


7 9 <sup>lots</sup> 24 & 35 2<sup>nd</sup> q<sup>r</sup>

No 581.

Bitter Elm s. 133 c. 31 c.

Stone B



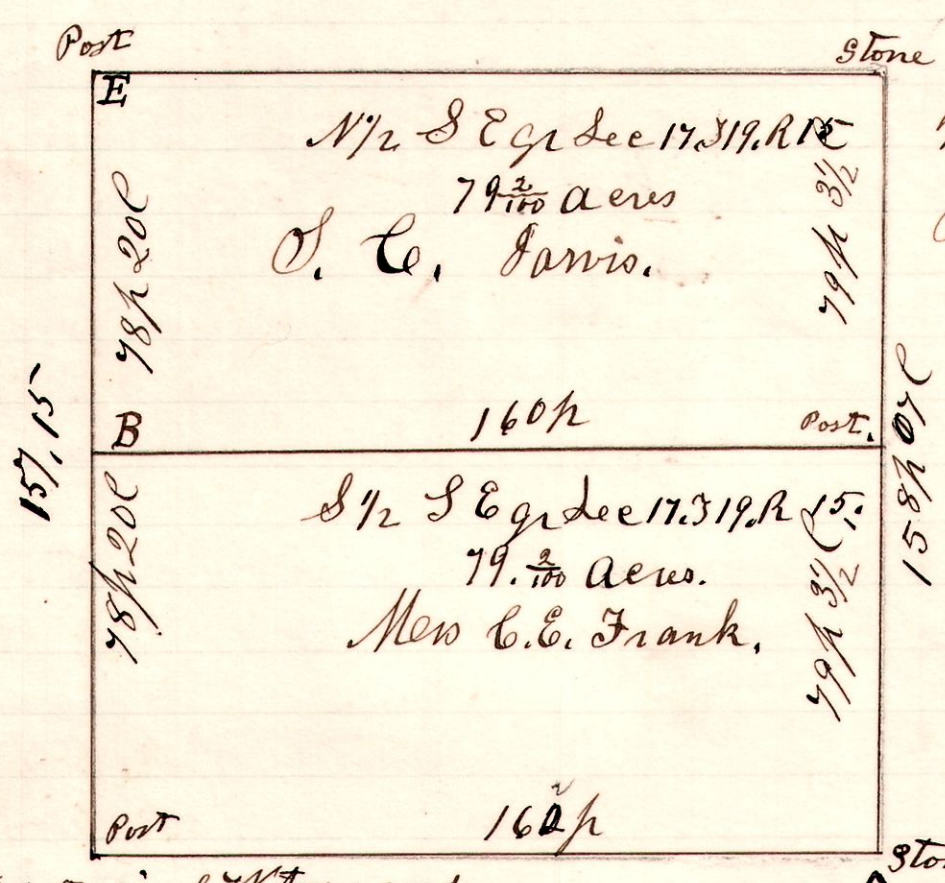
A survey made to locate and establish the corners and lines between lots No 34 and 35 in the 2<sup>nd</sup> q<sup>r</sup>. Township 9 of Range 7. in Hardy Township

A. B. Walnut 14". S 76 1/4 W 15 c.

H. H. Robinson  
County Surveyor.

15 19 17 S.E.

No 582.



A Survey made for Mrs C. C. Frank and S. C. Jarvis, being the South East quarter of Section 17. in Township 19 of Range 15.

May 2<sup>nd</sup> 1905  
H. H. Robinson  
County Surveyor

One original Witness good,  
W. Dak. N 16 c. 17.  
B. Walnut 30" S 6 E 22 c.