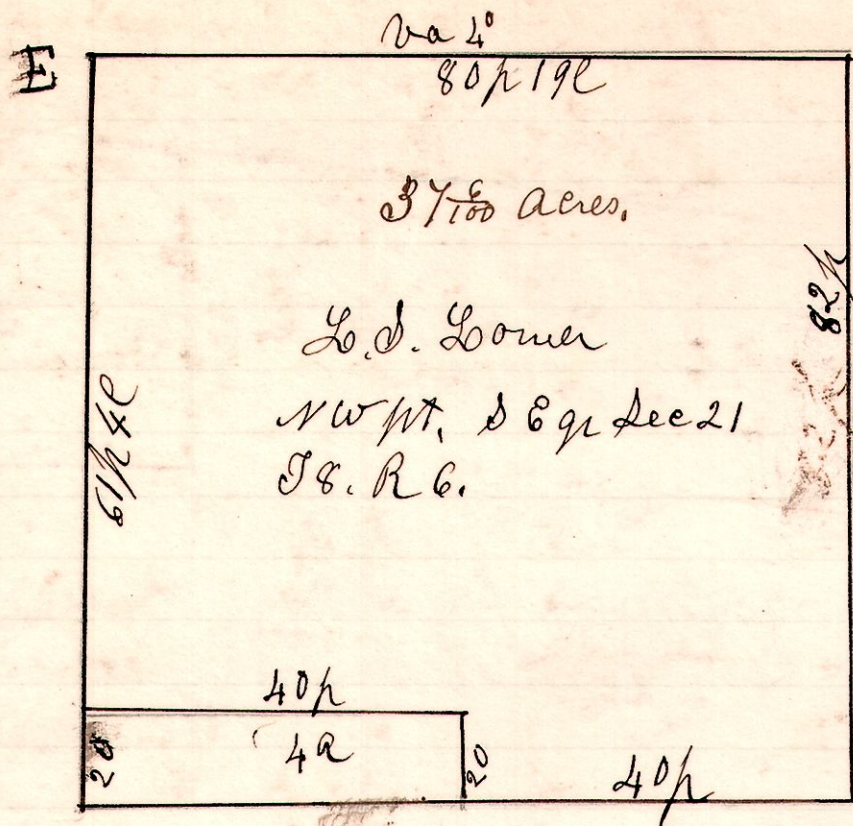


No 600.

6 8 21



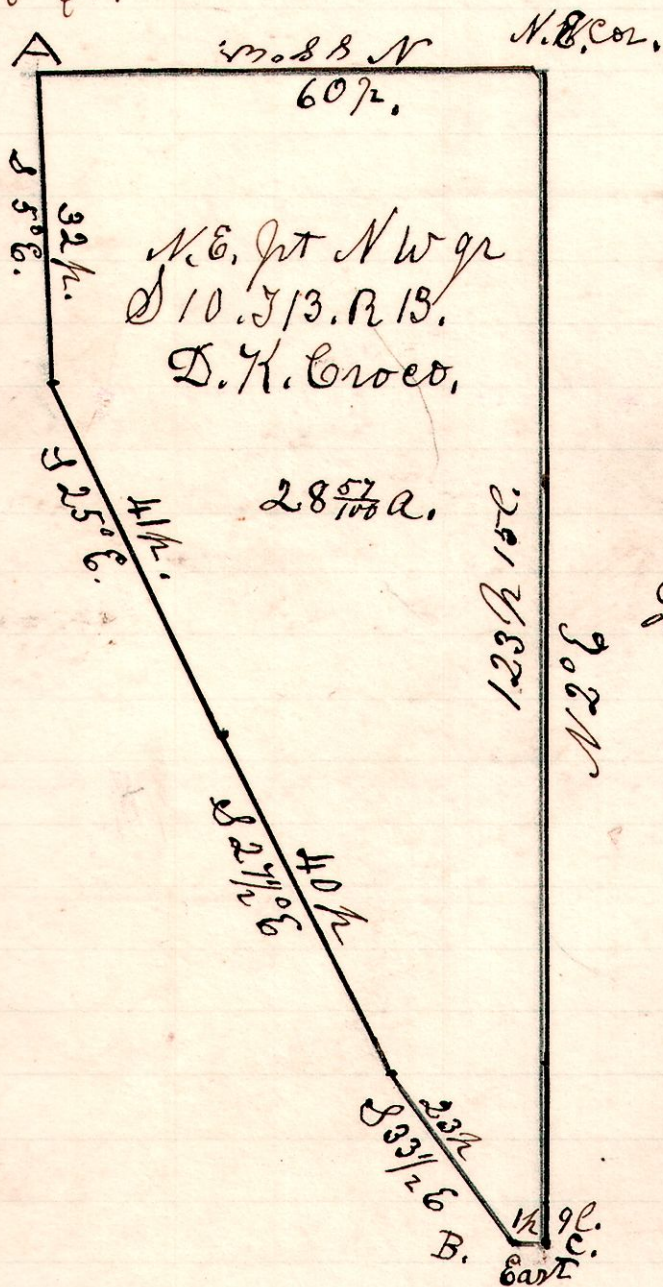
A survey made for
F. J. Louke.

Jan 29th 1906.

H. H. Robinson

No 601

13 13 10 NW



A survey made for D. K. Croco.

April 18th 1906.

H. H. Robinson

County Surveyor.

Chain carriers. Arman
— Shadle. Jas Leint.
D. K. Croco.

- A. Gum N 25 1/2° W 15.
- B. Beech 14, west 16.
- C. Beech 30, East, w side of tree the corner.