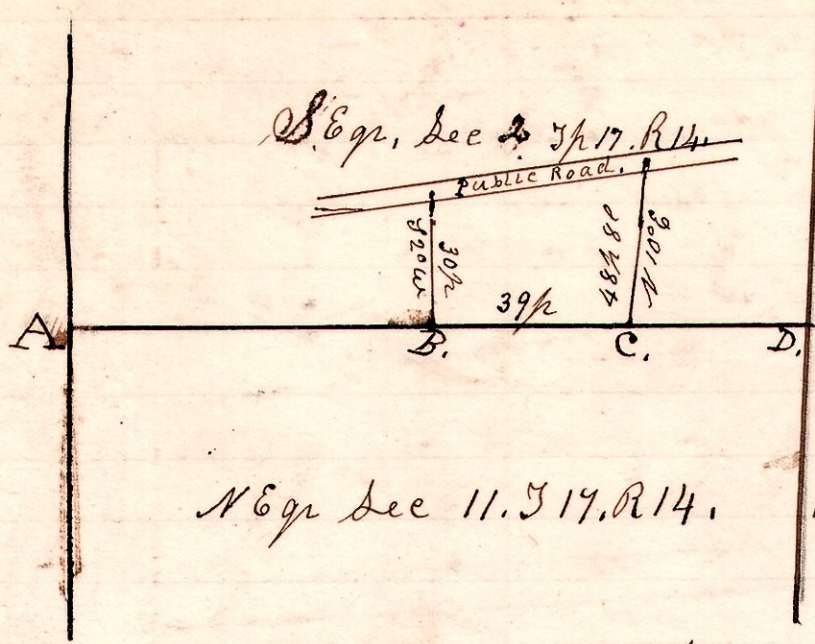


No 602

12 17 14 58



A Survey made for Mrs Everly, (formerly the Ed Stock land) In order to do so it was necessary to establish the gr section line A B. at D, we found a corner stone, but at A there was no corner visible, but I got a good range of the section line

west of A then from that range I ran a line to D and missed the corner stone & links, I then put posts and took witness trees at B & C, on the line between sections 27 11, S. 6 gr sec 27 & N. 6 gr sec 11.

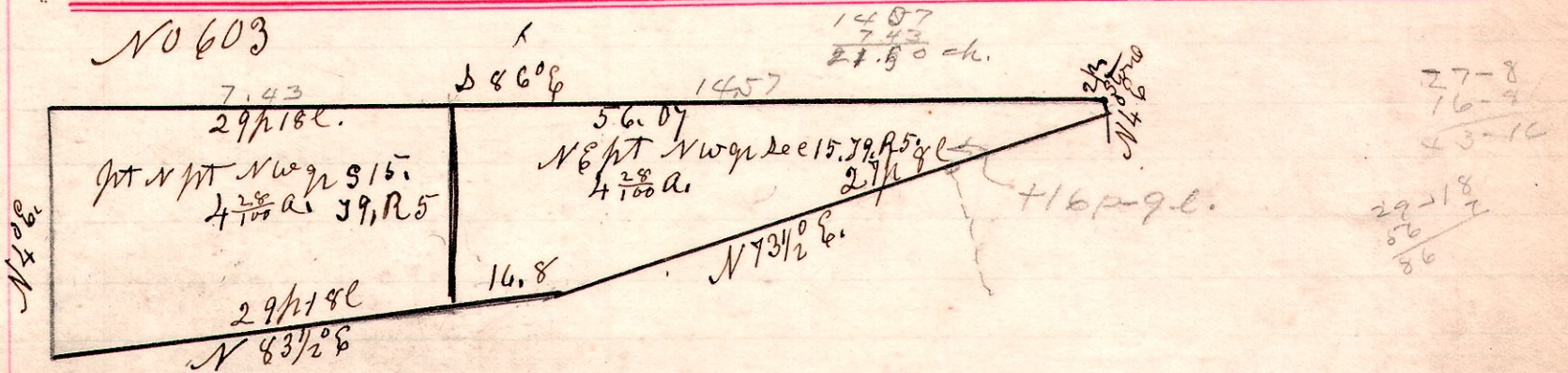
Witness at B. B. Walnut 18. N 74° E. 14 l.

" C. W. Cherry 8. N 55° E. 14 1/2 l

Chain Carriers,
O. D. Bruce. Flag,
J. E. Gasche. Appaman.

April 19th 1906.
H. H. Robinson
County Surveyor

59 15 NW.



A Survey made for M. A. Hitchcock, Being part of the NW 1/4 of Sec 15, in T 9 of R 5.

Chasmen M. A. Hitchcock & Ewing,
April 23rd 1906.

H. H. Robinson
County Surveyor.