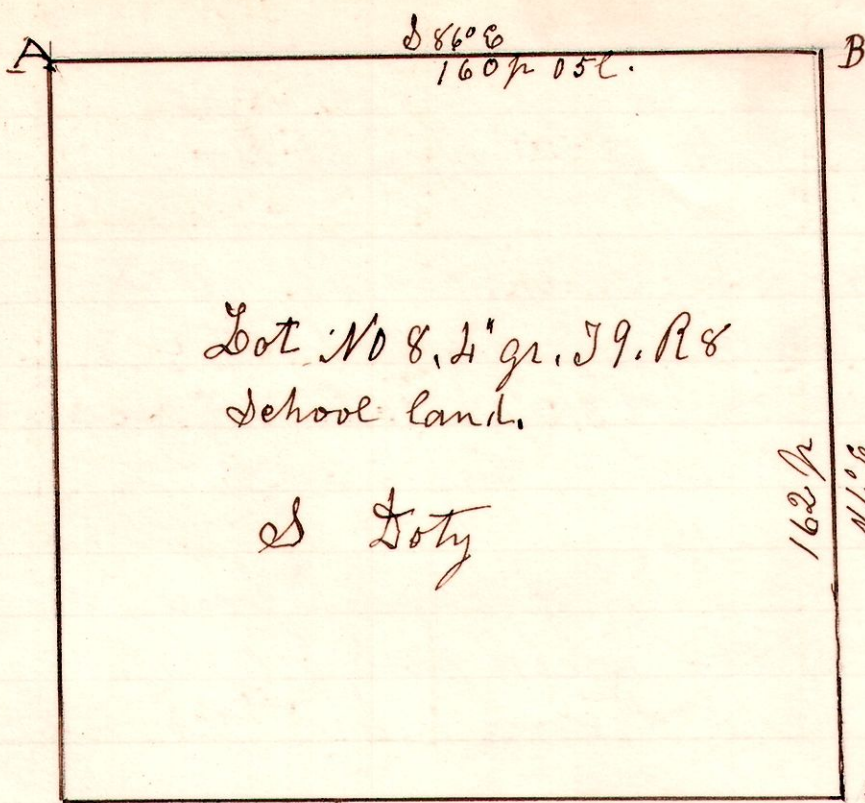


No 618

8 9 lot 8 1/2 gr



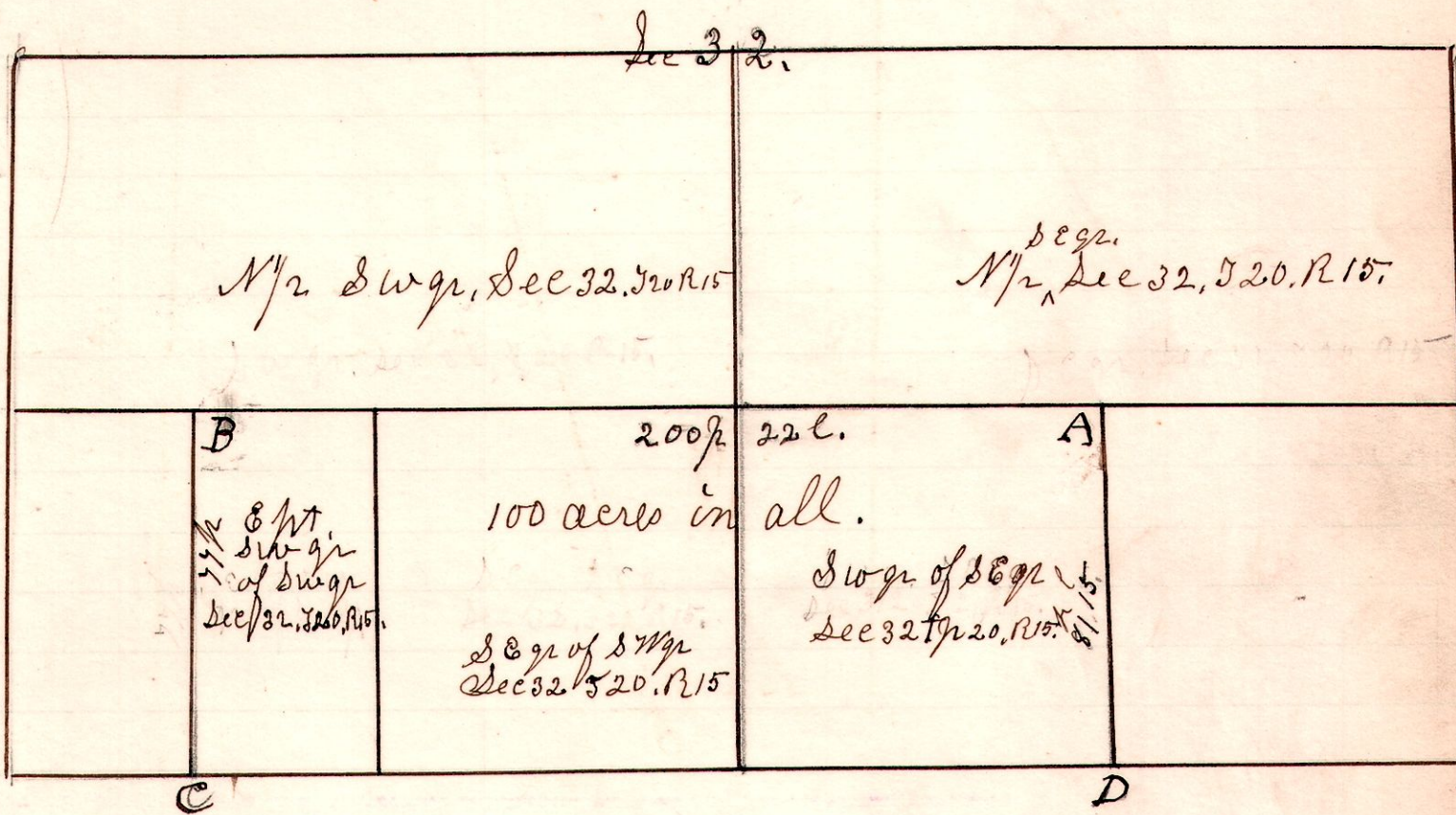
A Survey made for Doty, Wm. Loom & Graber, to locate the Corner C, & the lines A. B. C.

A. Cross on Rock,  
 B. Stone crossed,  
 C. Lime stone with glass under, & Gum 3 ft south.  
 April 2<sup>o</sup> 1907.

C  
 H. H. Robinson  
 County Surveyor.

No 619

15 20. 32.



A Survey made for Amos Kiek, being part, of the south part, of Section 32 in Township 20, of Range 15,  
 April 5<sup>th</sup> 1907.

H. H. Robinson  
 County Surveyor.