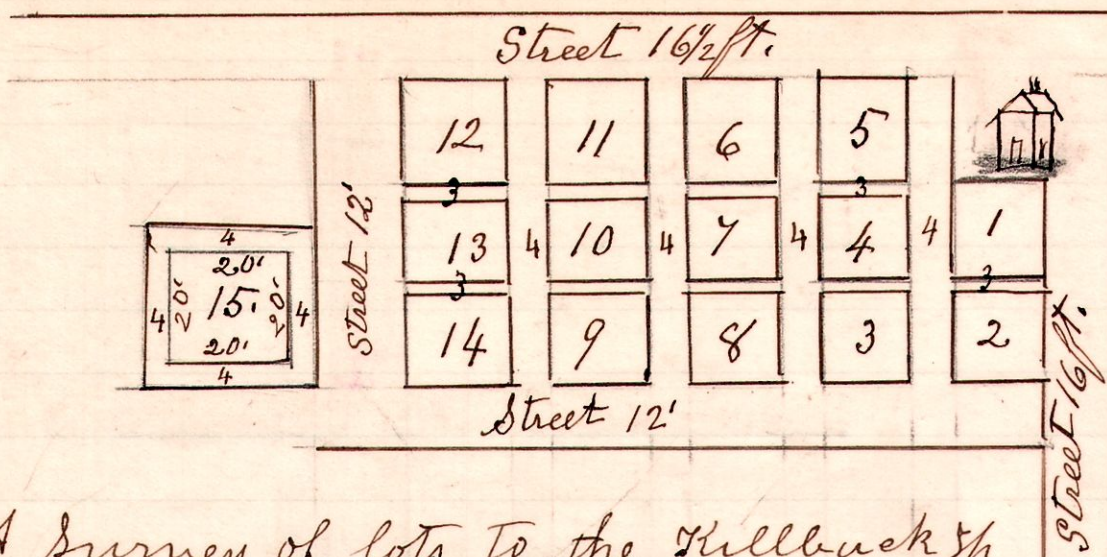


633

786



A survey of lots to the Hillbuck & Cemetery at Hillbuck village made November 26<sup>th</sup> 1907.

H. H. Robinson  
Co Surveyor.

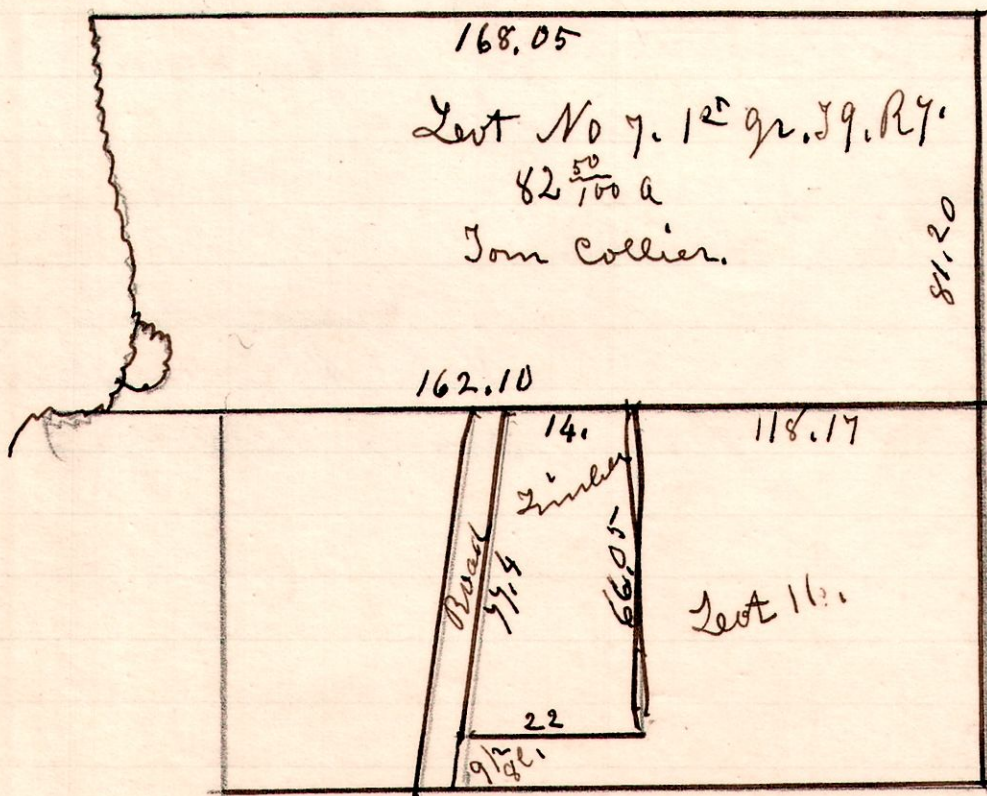
634

Millersburg.

A survey made for Millersburg village to locate Alley in rear of lots Wm Thompson, Kirk Trussel, & Harris Palmer, sworn assistants. Found Taylors Barn at East end on alley 17<sup>00</sup>/<sub>100</sub> feet, and at center feet on alley. The Nezelbach corner building is 9 inches on alley at center & 1 foot at East side, a S E corner of building. Stromes building 2 inches at corner on alley Grade.

79 lots 7 & 11.

635



A. Survey made for Joseph Colliers heirs Nov 14<sup>th</sup> 1906.

H. H. Robinson  
Co Surveyor.