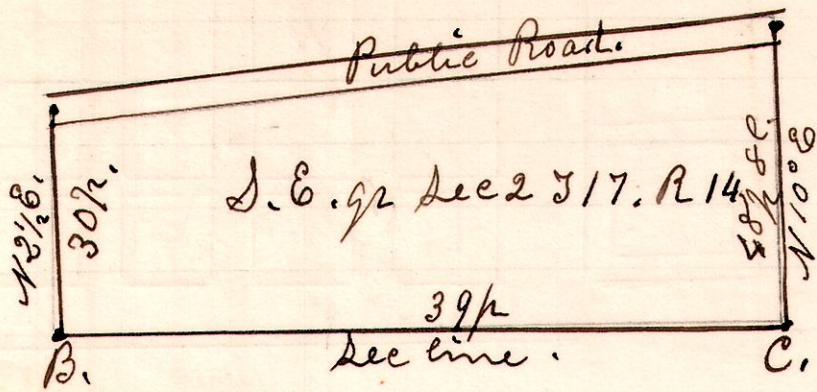


14-17-2

636,



April 19th 1906.

B. B. Walnut 18. N 74 E. 14. Chain carriers.

C. W. Cherry 8. N 55 E 14 1/2. O. D. Bruce.

J. E. Gasche.

Flag

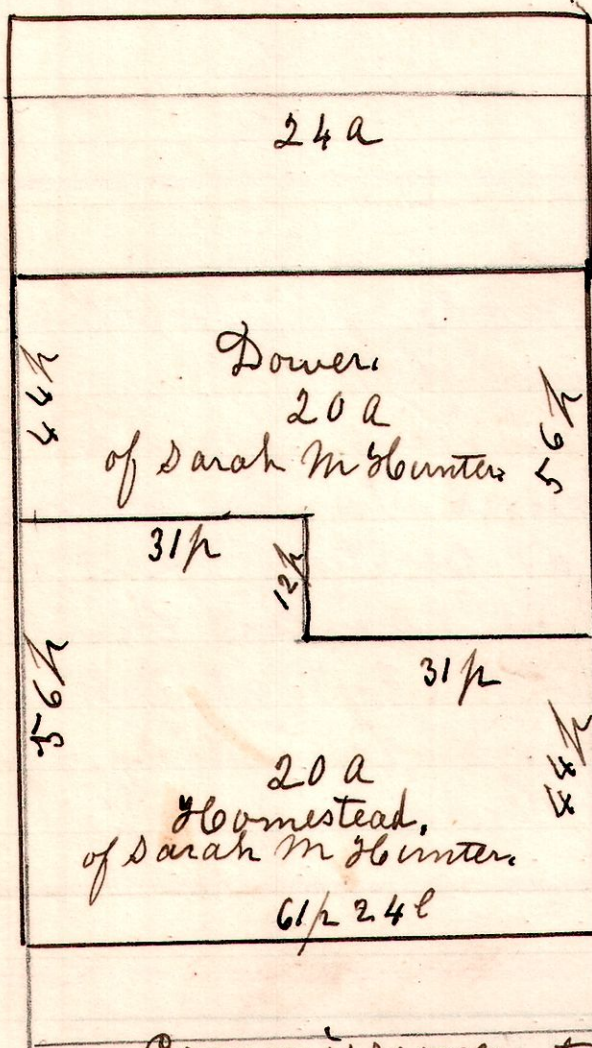
Appleman.

Made for Auman sisters.

H. H. Robinson
Co Surveyor.

8 8 4. NW.

637



W 1/2 of NW q. Sec 4. 58. R. 8.

A survey made to assign
Dower & Homestead to
Sarah M Hunter,
widow of David Hunter.

Sept 9th 1907.

H. H. Robinson
Co Surveyor.

Commissioner to assign Dower & Homestead.
Webb McLaughlin,
Joseph Borden
H. H. Robinson

Chain carriers
Webb McLaughlin,
George Morey.