

A survey of the Drushel Family Cemetery lot in the east central part of lot 2; fourth quarter Twp., Twp. 10, Rg. 6; Salt Creek Twp., Holmes County Ohio.

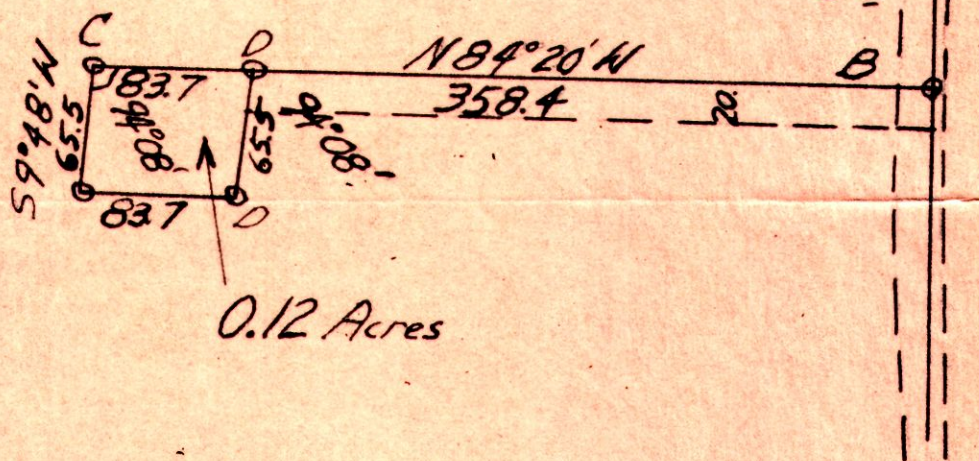
- A. N.E. corner of Lot 2; iron pipe set; 12" W. Oak N.E. 26.0', 12" W. Oak S.E. 28.2', 8" Hickory W. 26.9'
- B. Iron pipe set on lot line on East side of present traveled road, 30" B. Oak N.E. 13.9', 12" W. Oak E. 16.2'
- C. Iron pipe set; N.W. corner of base of Frederick and Eliza Jane monument S.E. 32.1, N.W. corner of base of Omstead monument E. of S. 36.4
- D. Iron pipes set

September 1952

NE Corner Lot 2

I certify this survey to be correct to the best of my knowledge and belief.

J. T. McClure
2403



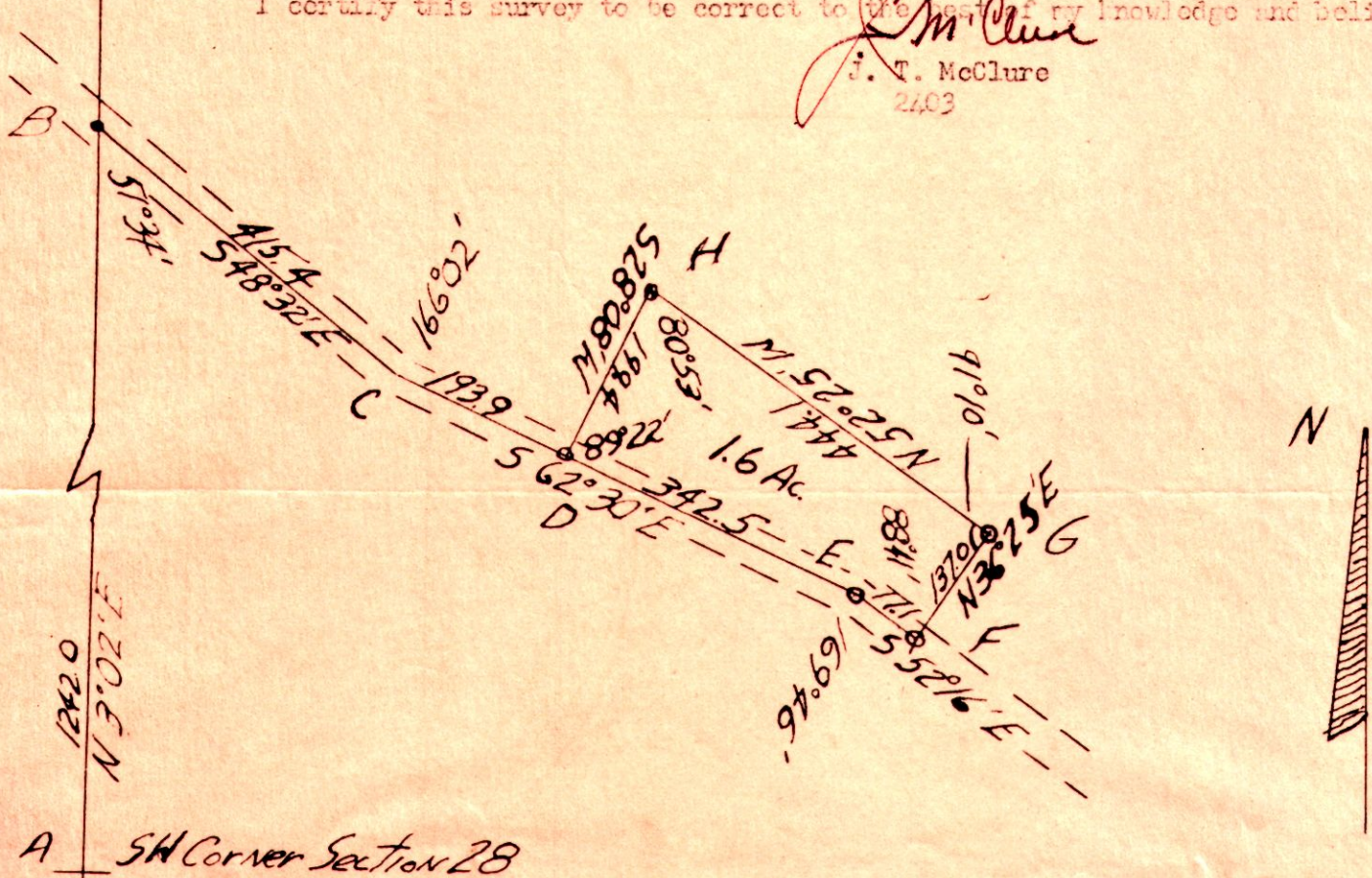
A survey in the southwest part of the southwest quarter of Sec. 28, Twp. 18, Rg. 14, Riley Twp., Holmes County Ohio.

- A. S.W. corner Sec. 28, 36" Ash south 20'
- B. Iron pin set on Sec. line; 6" Walnut S. 30° W. 15.3'
- C. An unmarked point in public road
- D. Iron pipe set, S.W. corner of house N. 77° E. 54.4', E. Pole N. 14° W. 26.5'
- E. Iron pipe set
- F. Iron pipe set, 36" Maple N. 11° 30' E. 53.6', 12" Maple N. 51° E. 14.3', Iron pipe N. 36° 25' E. 15.3'
- G. Iron pipe set, 6" Sycamore S. 82° 30' E. 20.8', 12" Walnut N. 20° W. 13.4'
- H. Iron pipe set, 24" Sycamore N. 77° E. 53.4', 20" Sycamore S. 81° W. 57.2'

September 1952

I certify this survey to be correct to the best of my knowledge and belief.

J. T. McClure
J. T. McClure
2403



A SW Corner Section 28