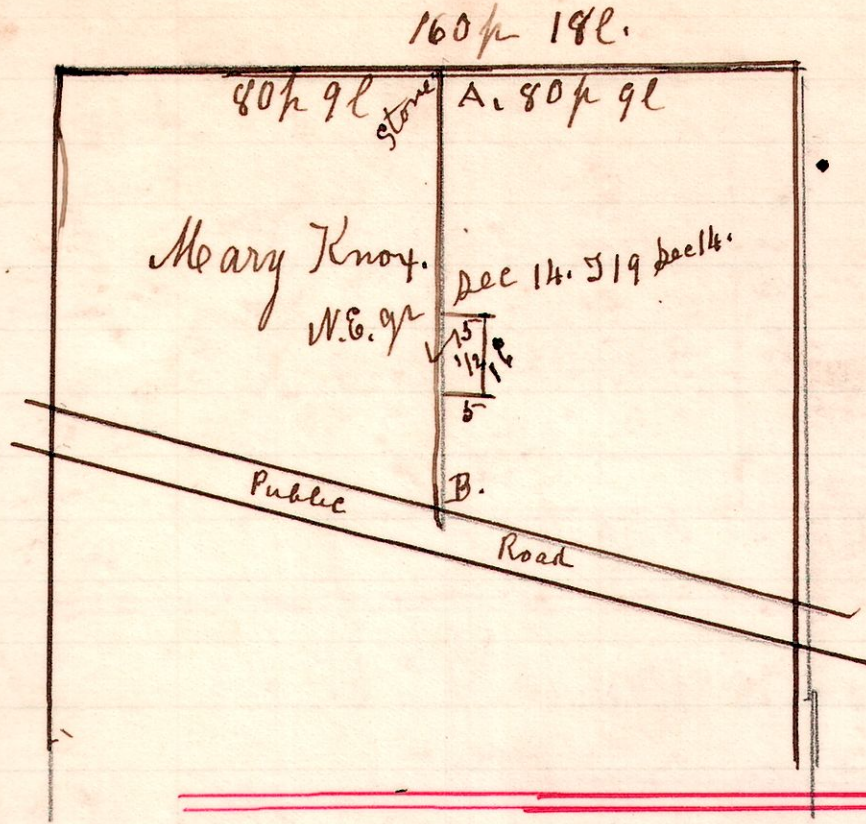


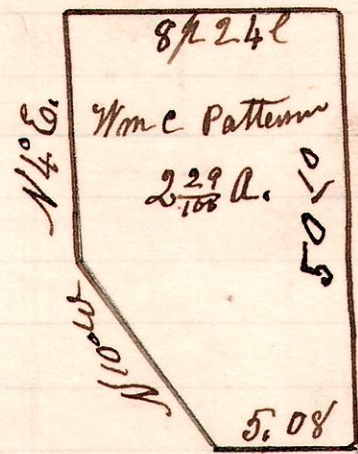
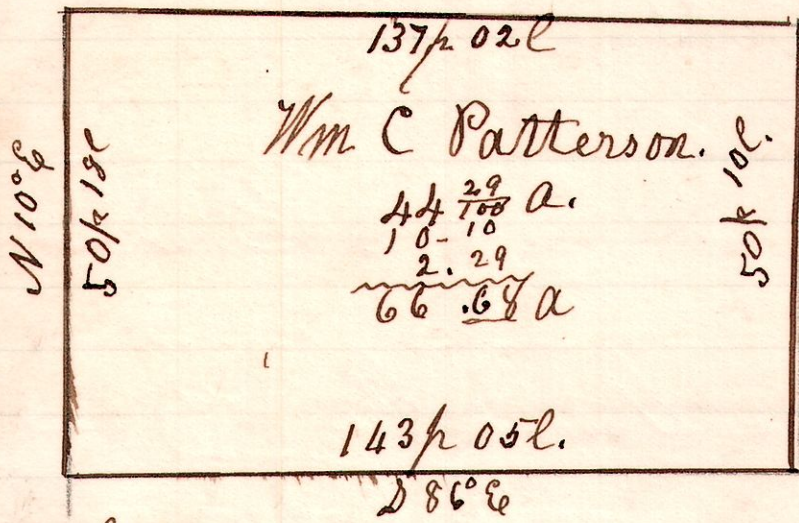
657



A Survey made to Establish
the line A.B.
April 6th 1908.
H. H. Robinson
Co Surveyor.

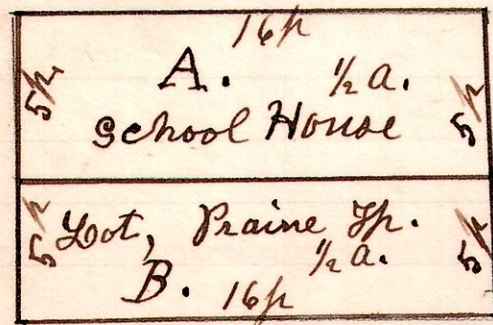
6 8 2nd 31
7 8 29 31

658



A Survey made for Wm C Patterson
May 25th 1908
H. H. Robinson
Co Surveyor.

659



A. Land bought from Wm Miller.

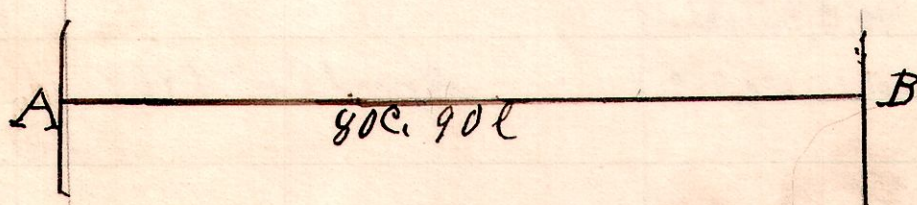
B. Land bought from Sherman Baker.

May 25th 1908.

H. H. Robinson
Co Surveyor

Indexed to here

660



15-20-24+25

A joint Holmes & Wayne County Survey made by order
the Commissioners of both counties. H. H. Robinson
Co Surveyor of Holmes, & Philip Markley Deputy
Co Surveyor of Wayne County doing the surveying.
Wm Fritz & H. H. Palmer Chain Carriers. Parties present,
G. Eiseman. The line located, is between Sections
24 & 25 T. 20. R. 15. A stone the corner, B- Witness
Standing. August 19th 1908.

H. H. Robinson
Co Surveyor