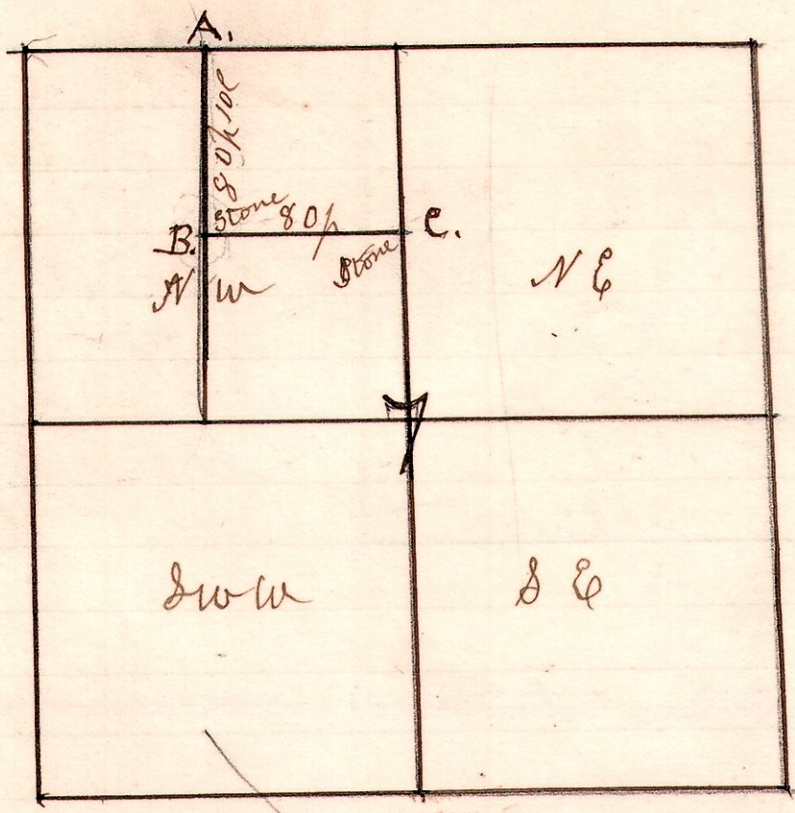


987

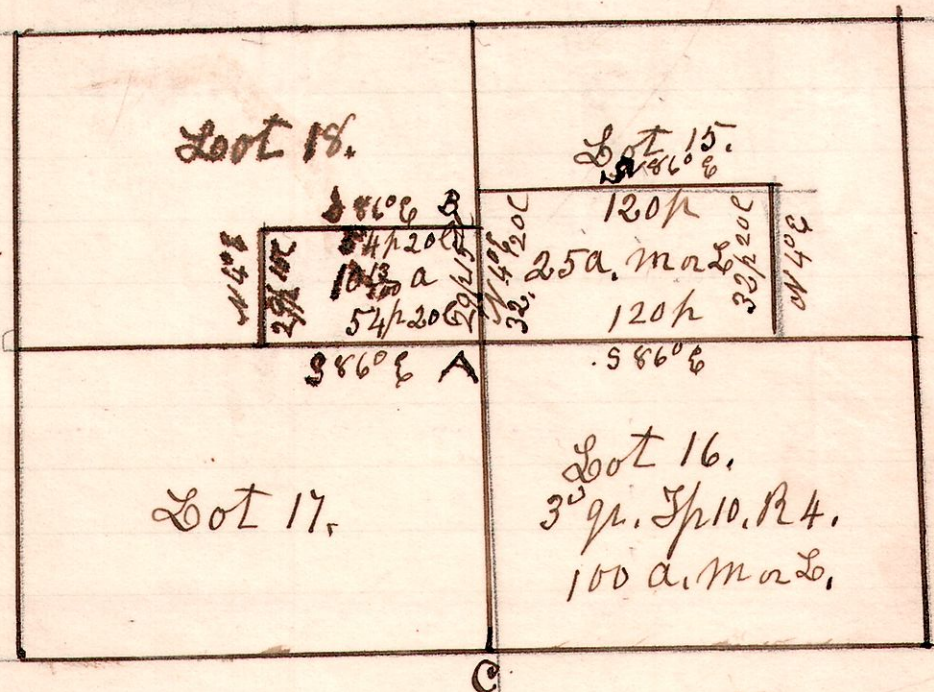


A Survey made for
 Starner and Ahlbeck,
 being the lines A.B.C.
 Survey made to establish
 Corners + lines,
 February 18th 1909.

H. H. Robinson
 Co Surveyor.

A.B. Oak 6. w 2l.

410 lots
 15-16.18



A Survey made for John H Garver to
 locate lines and corners.
 Found good well marked stones at corners A,B,C,
 and planted good corner stones at all other
 corners of the three pieces surveyed.
 In measuring the 35 acre piece East, the 120 rods
 ended 2 rods west of a rail fence running north
 and south approximately parallel with the east
 line of the 120 rod measurement of the 25 acre piece
 east line.

March 24 & 25 1909.

H. H. Robinson
 County Surveyor

Chain Carriers,
 John Smiley,
 E. M. Troyer
 Fred Fowl.