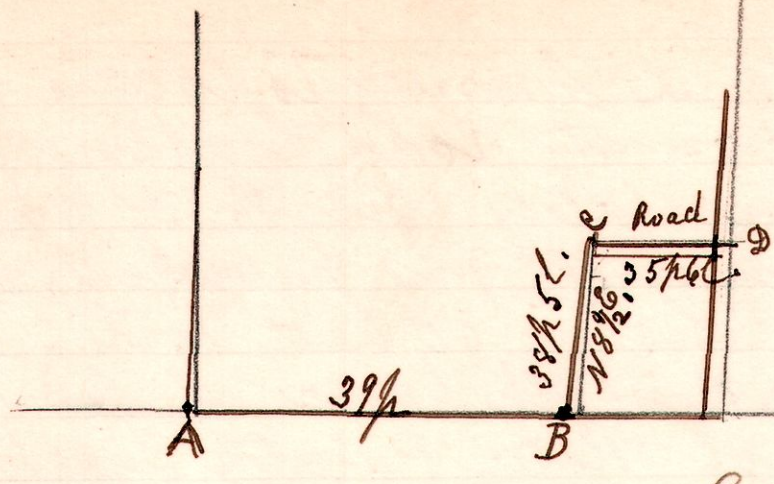


995.

14 17 2



A Survey made for  
 the Auman Sisters.  
 to locate the line B.C.  
 being in the S.W.  
 qr of Sec 2. T17. R14.

Present  
 Alice Euerly,  
 - Bruce.

Chain Carriers,  
 S.C. Critchfield,  
 W.S. Appleman.

August 23 1909.

H.C. Robinson  
 Co Surveyor

996

15-19-11.

A Survey made for the  
 Commissioners of an alteration  
 of a County Road dedicated  
 by Edward Koehler, being  
 in the South west quarter  
 of Section 11. in T19 of R15.  
 in Washington Co

- N 01° 14 1/2° E - 16 1/4
- " 2 - N 6° W - 6 " 20 "
- " 3 - N 9° E - 12 " 00 "
- " 4 - N 12° E - 5 " 5 "
- " 5 - N 27° E - 8 " 11 "
- 49 1/2 000



Edward Koehler

Chain Carriers,  
 Harris H. Palmer  
 Koehler Boy.

H.C. Robinson  
 Co Surveyor.