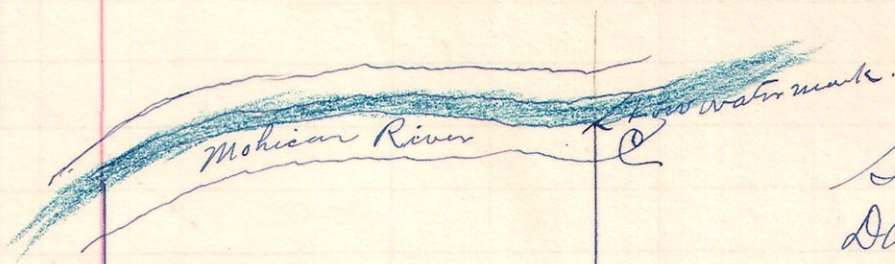


15 19 19 Part NW 1/4 Gr.



Survey made for Daw Mosher and
Daw Staumbaugh to locate line B to C
and B to D. according to deed.

Pt. NW 1/4 Sec. 19
Tp. 19. R. 15
Daw Mosher

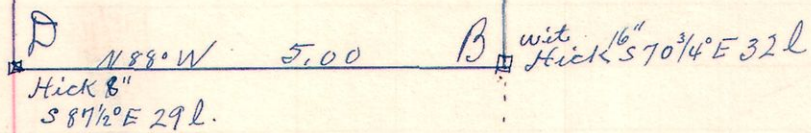
5 Acres.

STONE OR
OR SEC. LINE
N. W. COR. of 40 A TRACT.

George Heyde }
Leander Martin } chainmen
sworn.

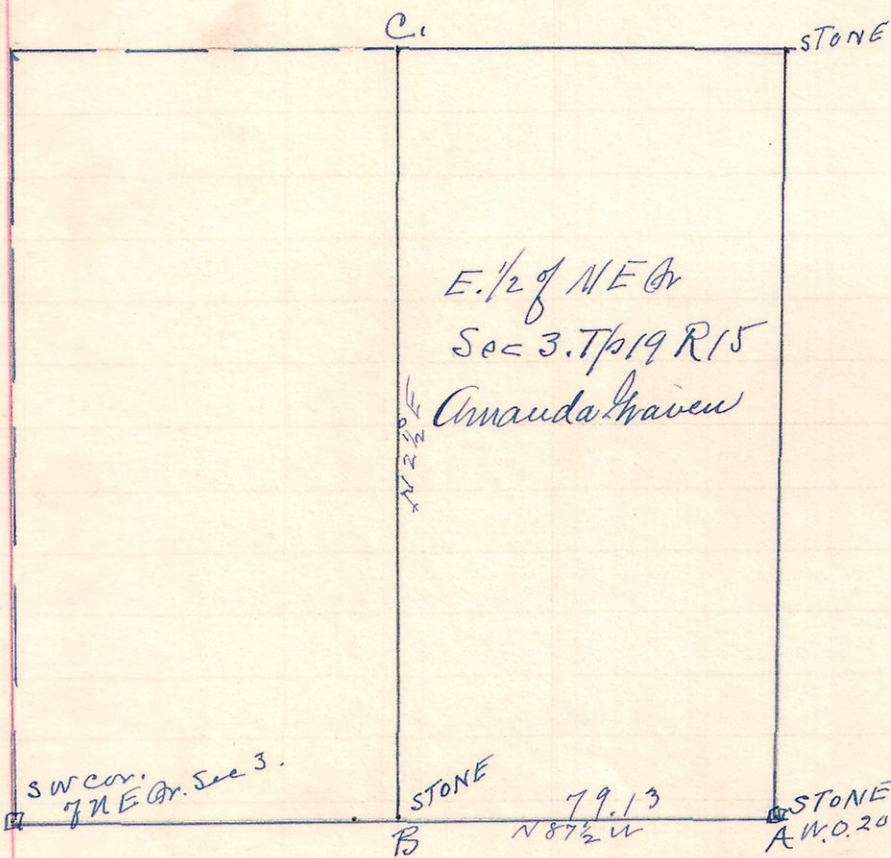
March 28. 1910.

W. L. Reidenbach
County Surveyor



S.E. cor of NW 1/4 Gr. A. Stone

15 19 3 N. East
E. Part.



E. 1/2 of NE 1/4
Sec 3. Tp 19 R 15
Amanda Graven

Survey made for Amanda Graven
to locate line B, C. + cor B.
at B found old stake on side of
Road in good condition set by
Robinson on former survey.
Set stake in Road on line and
staked line B to C.

J. W. Hoffer }
John Carter } chainmen
sworn.

March 29. 1910

W. L. Reidenbach
County Surveyor