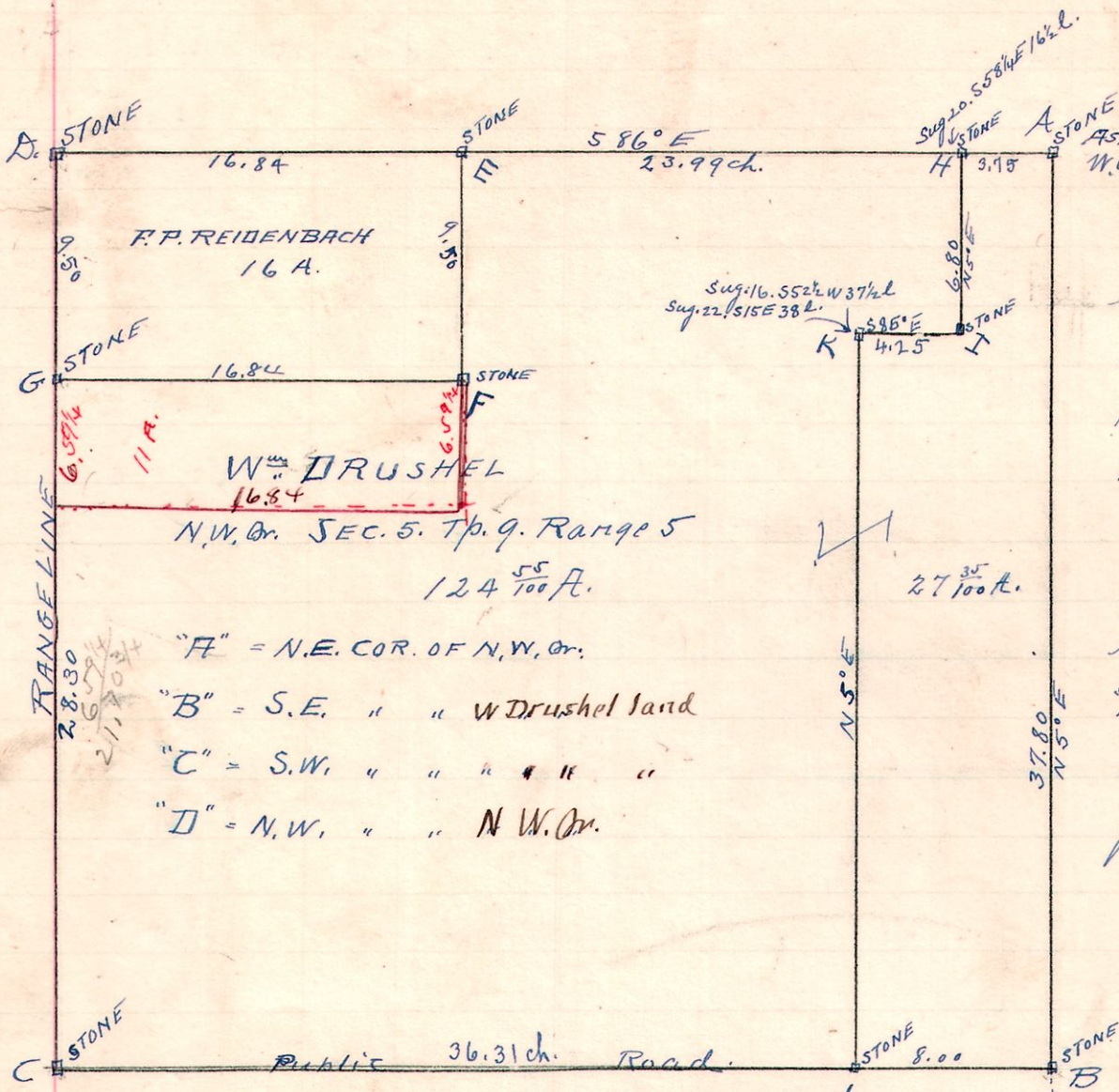


595 N.W. Cr.



"F" = N.E. COR. OF N.W. Cr.
 "B" = S.E. " " Wm Drushel land
 "C" = S.W. " " " " "
 "D" = N.W. " " N.W. Cr.

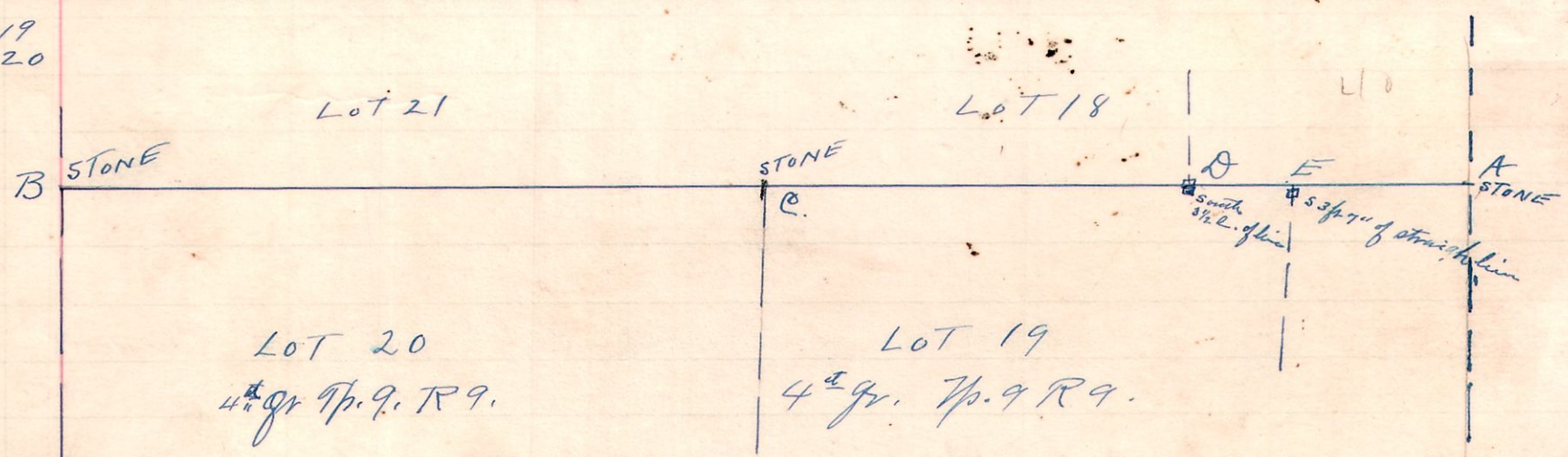
Ed Seltzer
 E.A. Reidenbach } Chainmen

November 24, 1910

W.L. Reidenbach
 County Surveyor

Survey Made for Wm Drushel and Fred P. Reidenbach.
 Pt. "F" found Stone and witness standing in good condition.
 I cut off 27³⁵/₁₀₀ ft on east side of Quarter by running line as shown and set stone at "L".
 "K" "I" and "H" and at "B", I dug and found old stone in good condition.
 Run line "A" to "E" and placed stakes every 20 rods on line.
 Found all other stones shown in good condition.
 I then measured Balance of Quarter for contents as shown.
 found hole where stone was and measured 4.75 ch. east for in four days and dug and found stone "B"

99^{4E} Cr. 20



Survey made for Edward Lenocker & George Klingler for line from A. to B. At "A" found stone standing and stump of old witness standing.
 At "B" found stone corner and chestnut stump partly decayed, hickory stump good.
 At "C" set stone on line and take new witness. Hickory 22. N4°E 40 1/2 L. This conform to old fence line as claimed by Lenocker also a ditch line along north side lot 20.
 The intermediate stones "D" & "E" are not in a straight line with A. nor is "E" even in line with D and A.

Saw Bureau & Geo Klingler Chainmen. 1910

W.L. Reidenbach
 Co Surveyor