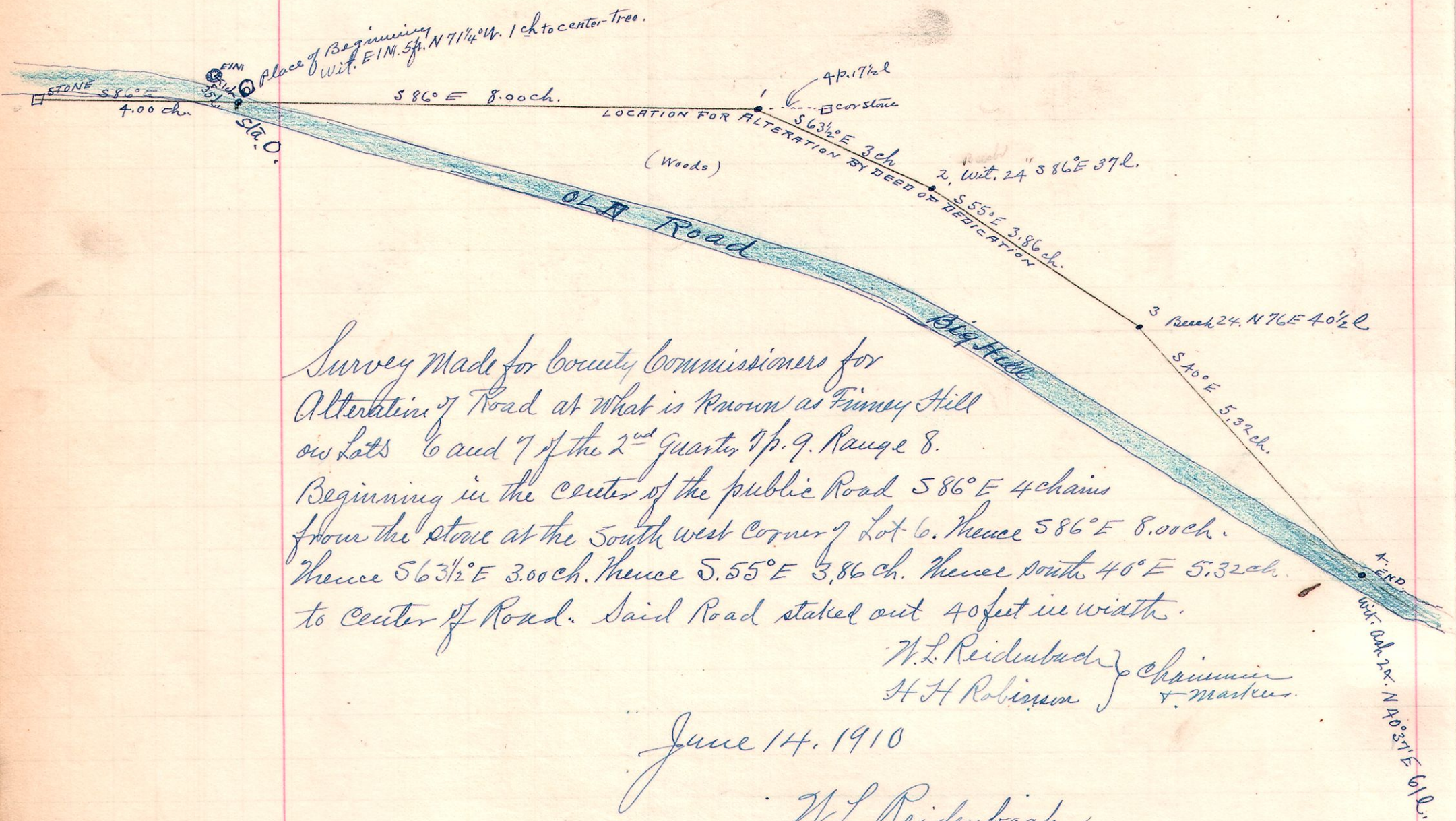


89 2nd q. 6 or 7. SR 39



Survey Made for County Commissioners for
Alteration of Road at what is known as Finney Hill
on Lots 6 and 7 of the 2nd Quarter 1st 9. Range 8.

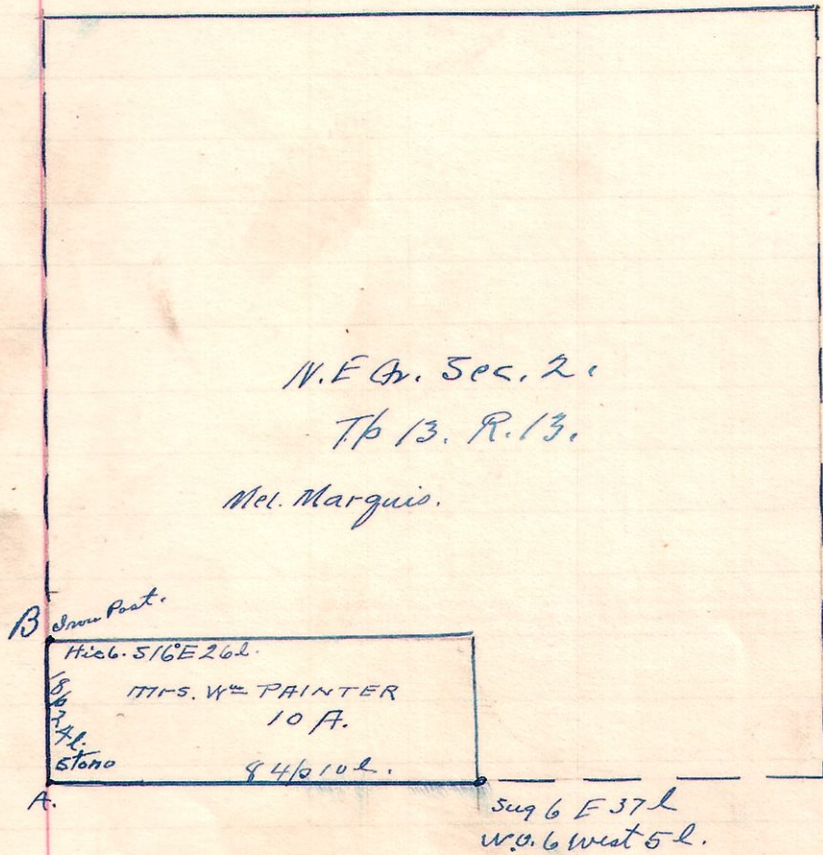
Beginning in the center of the public Road 586° E 4 chains
from the stone at the South west corner of Lot 6. Thence 586° E 8.00 ch.
Thence 563 1/2° E 3.00 ch. Thence 5.55° E 3.86 ch. Thence south 40° E 5.32 ch.
to center of Road. Said Road staked out 40 feet in width.

W.L. Reidenbach } Chairman
H.H. Robinson } & markers.

June 14, 1910

W.L. Reidenbach
County Surveyor

13 13 2nd part N.E. Q.



Survey made for Mrs Wm Painter to
establish corner "B" where I found
old witness Sugar. N 53° E 18 ch
burnt down. Took new witness
Hickory 6. 516° E 26 ch

Mel Marquis } Chairman
David Crocker } sworn.

W.L. Reidenbach
County Surveyor

May 14, 1910.