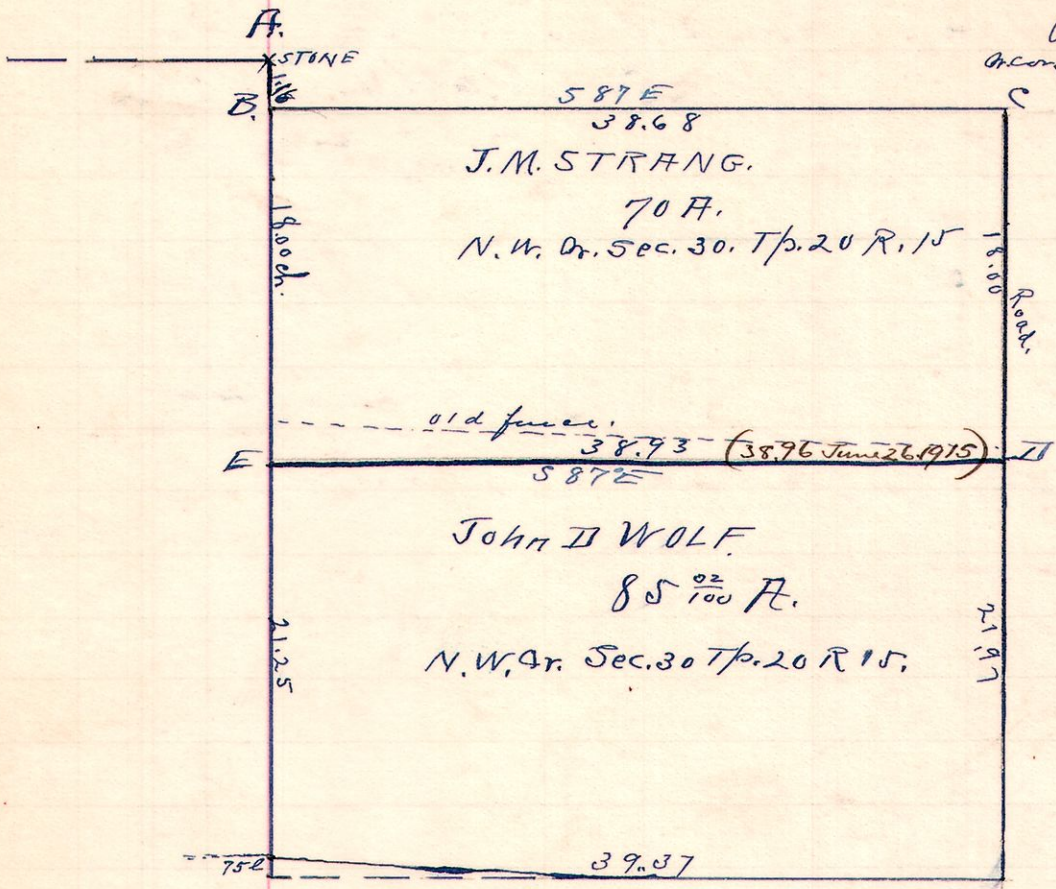


15 20 30 N.W. Qr.

January 31, 1911

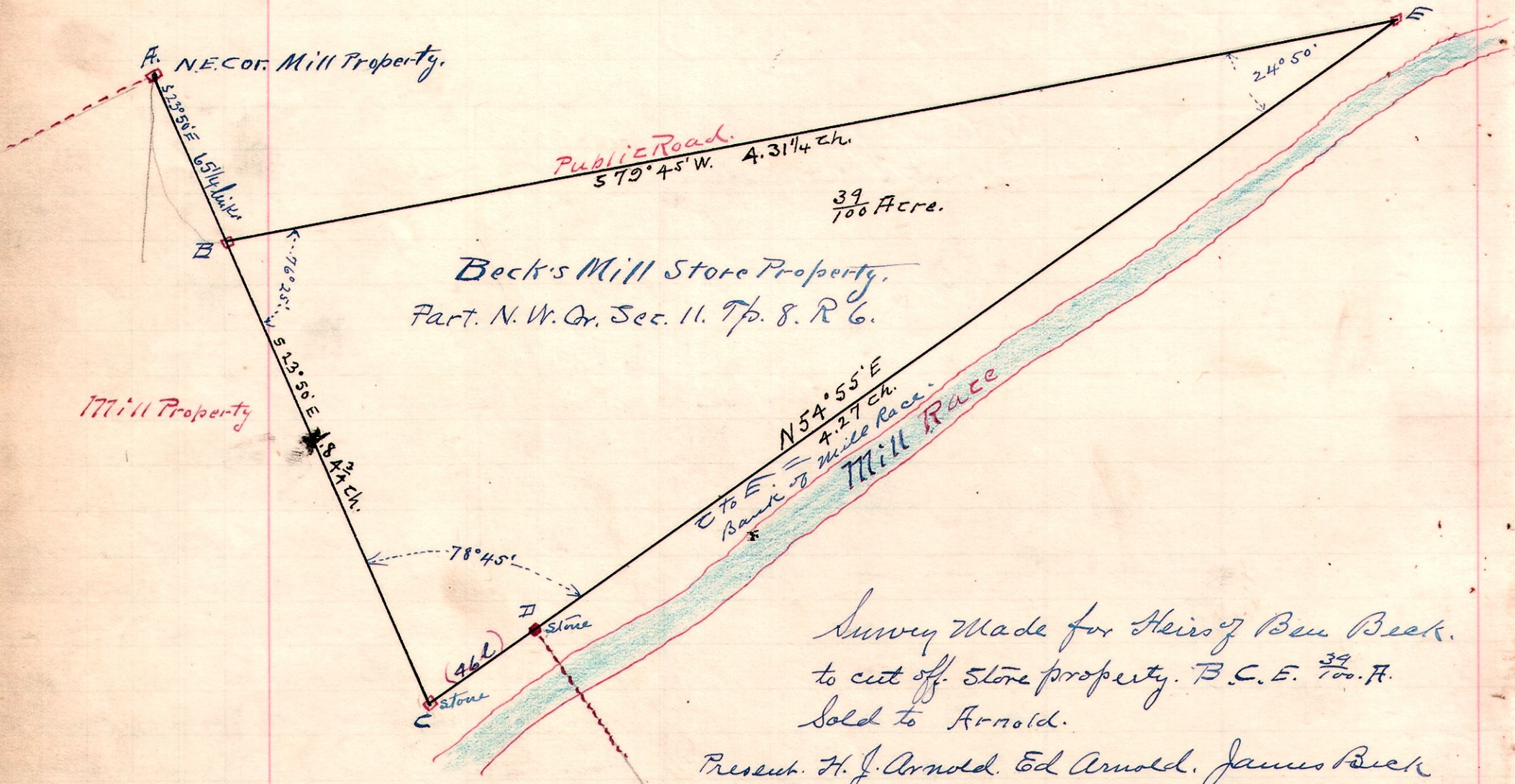


Survey made for John D Wolf and J. M. Strang to locate line D.E. to cut off .70 acres along north side of quarter according to original deed. at E the old fence was about 8 rods north and at H about .33 links.

Walter Wolf } chairman
J. M. Strang }

W. L. Reidenbach
les Surveyor

6 8 11 part. N.W. Qr.



Survey made for Heirs of Ben Beck to cut off Store property B.C.E. 39/100 A. Sold to Arnold.

Present. H. J. Arnold, Ed Arnold, James Beck, Sam Kaser.

Ed Arnold } chairman
Sam Kaser. }

Feb. 1st 1911.

W. L. Reidenbach
les Surveyor