

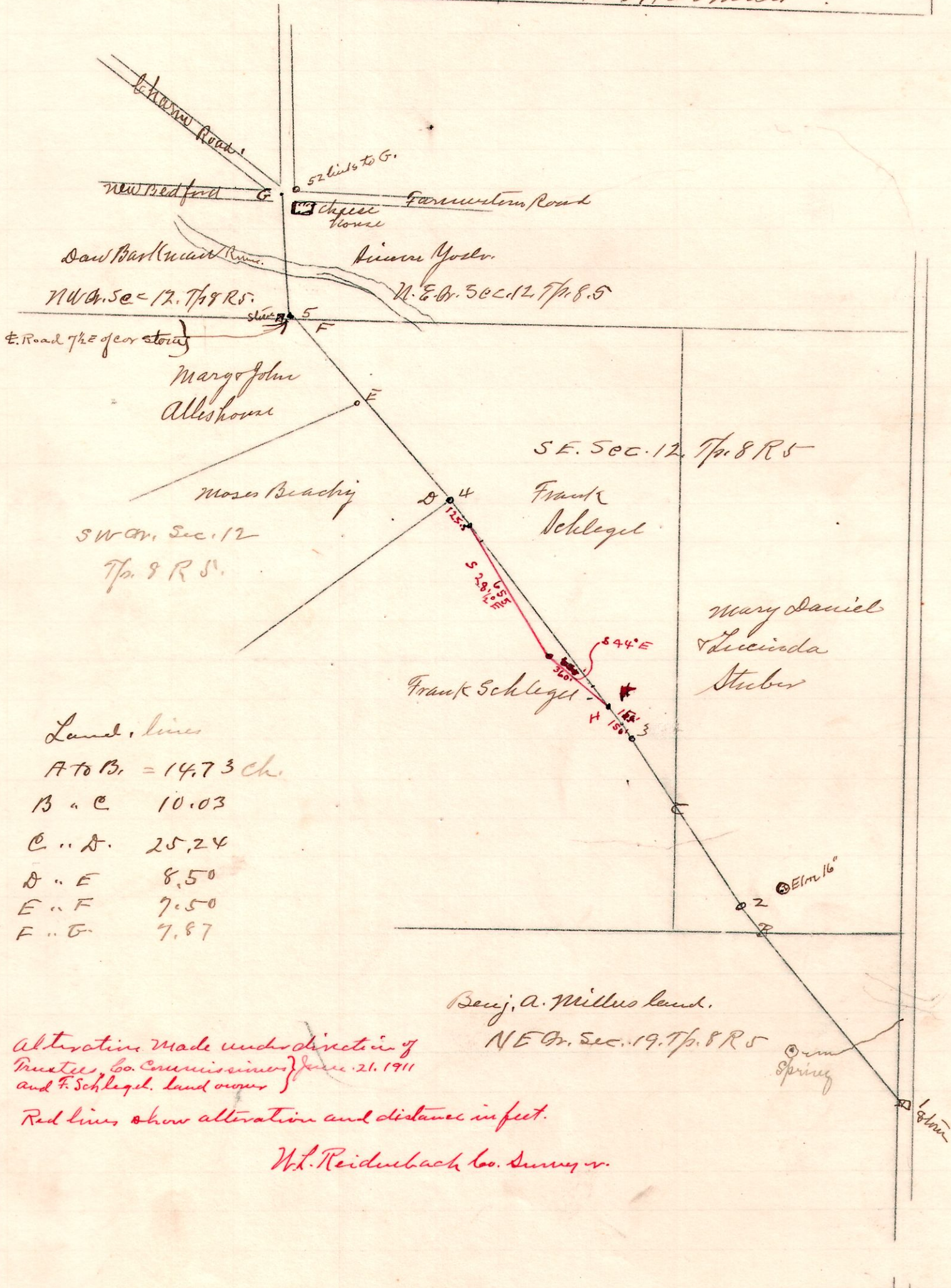
Schlegel Road

5 8 12 SE+SW
CR114

Survey of County Road. for County Commissioner Petitioned for by Frank Schlegel et al in German Tp. Holmes Co. O. Surveyed March 30, 1911.

Geo. C. Schuell } Viewers }
A. W. Burtkey } }
H. W. Boyd } }
G. A. Kreiger } Chairman }
W. J. Keifaber } }
Geo. H. Lange } Markers }
afforded }
afforded }

Sta	Course	Dist	Ref.
1	N. 34 3/4° W	16.61	Stone
2	" 29 1/4° W	13.94	W of Elm 16 N 60° E 26 l.
3	" 33 1/2° W	19.45	
4	" 36° W	16.00	A. E. cor. Moses Beachy land.
5	" 1° 50' E	7.87	7 1/2 ft. E of cor stone.
Total		73.87	0.923 Miles



Land lines
A to B = 14.73 ch.
B .. C 10.03
C .. D 25.24
D .. E 8.50
E .. F 7.50
F .. G 7.87

Alteration made under direction of Trustees, Co. Commissioners June 21, 1911 and F. Schlegel. land owner

Red lines show alteration and distances in feet.

W. L. Reidbach Co. Surveyor.