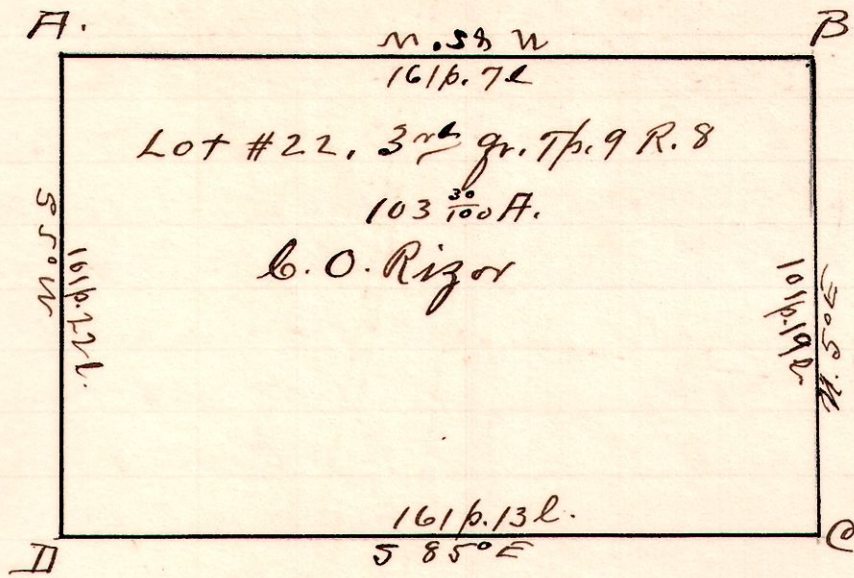


R 1/4

89 3<sup>rd</sup> gr. Lot 22.



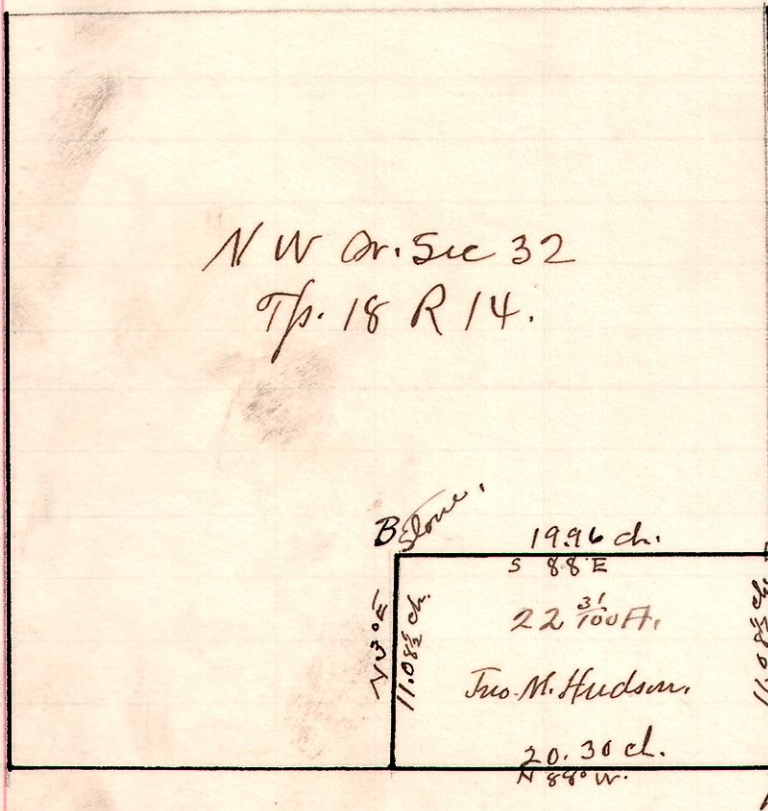
Survey made for  
C. O. Rizor. April. 11 1911.  
by H. H. Robinson.

approved this 12<sup>th</sup> day of  
April. 1911.

W. L. Reidenbach  
Co Surveyor

- A. Hickory 14 N 12° W 8 l.
- B. Walnut stump of original witness trees N 5° E 54 l.
- C. Sycamore 5" N 39 1/2° E. 30 1/2 l.
- D. Hickory 16" S 6° W 94 l.

14 18 32 NW

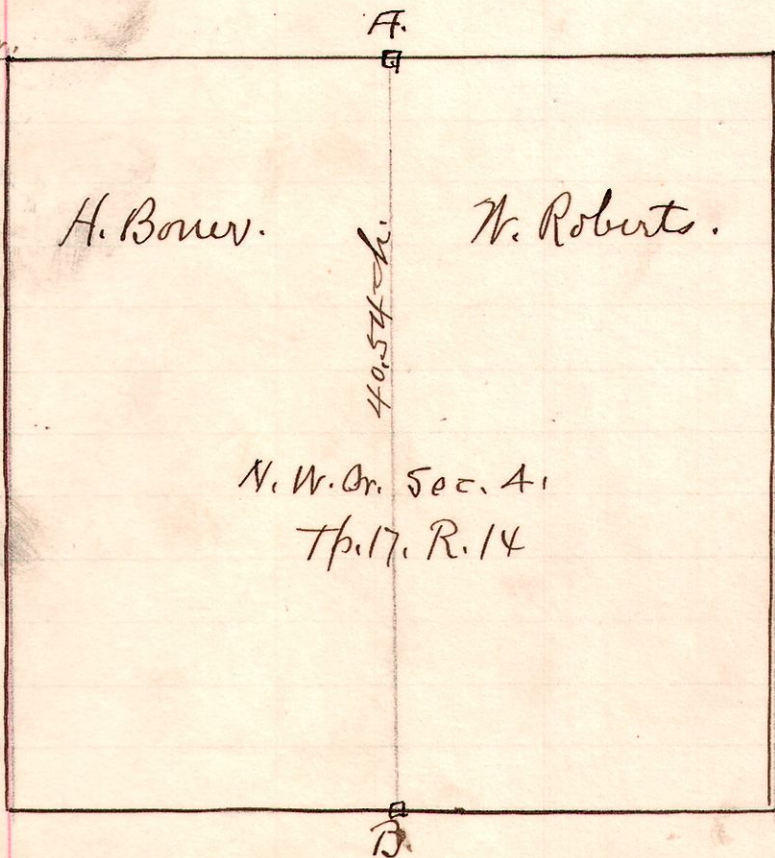


Survey made for O. D. Bruce  
& Jno M Hudson to cut off 22 3/100 Ft.  
and establish corner "A" which I  
established from original witness  
W. O. 15. 363 W. 11 l. and set stone  
corner in Road. (west wagon track)

Mch 24, 1911.

W. L. Reidenbach  
Co Surveyor

14 17 4 NW Cor.



Survey made for Willis Roberts.  
& Hiram Bower to determine  
line A. B.  
At "A" I found snag of original Red  
Oak standing N. 3° E 8 l. & tree now 36"  
and located corner from same and  
found stone in good condition  
"B." R. O. 12" now now 40" standing.  
located corner and set stone. also  
set stone on line A. B. at 10 ch.  
20 ch + 30 ch.

March 24, 1911

W. L. Reidenbach  
Co Surveyor