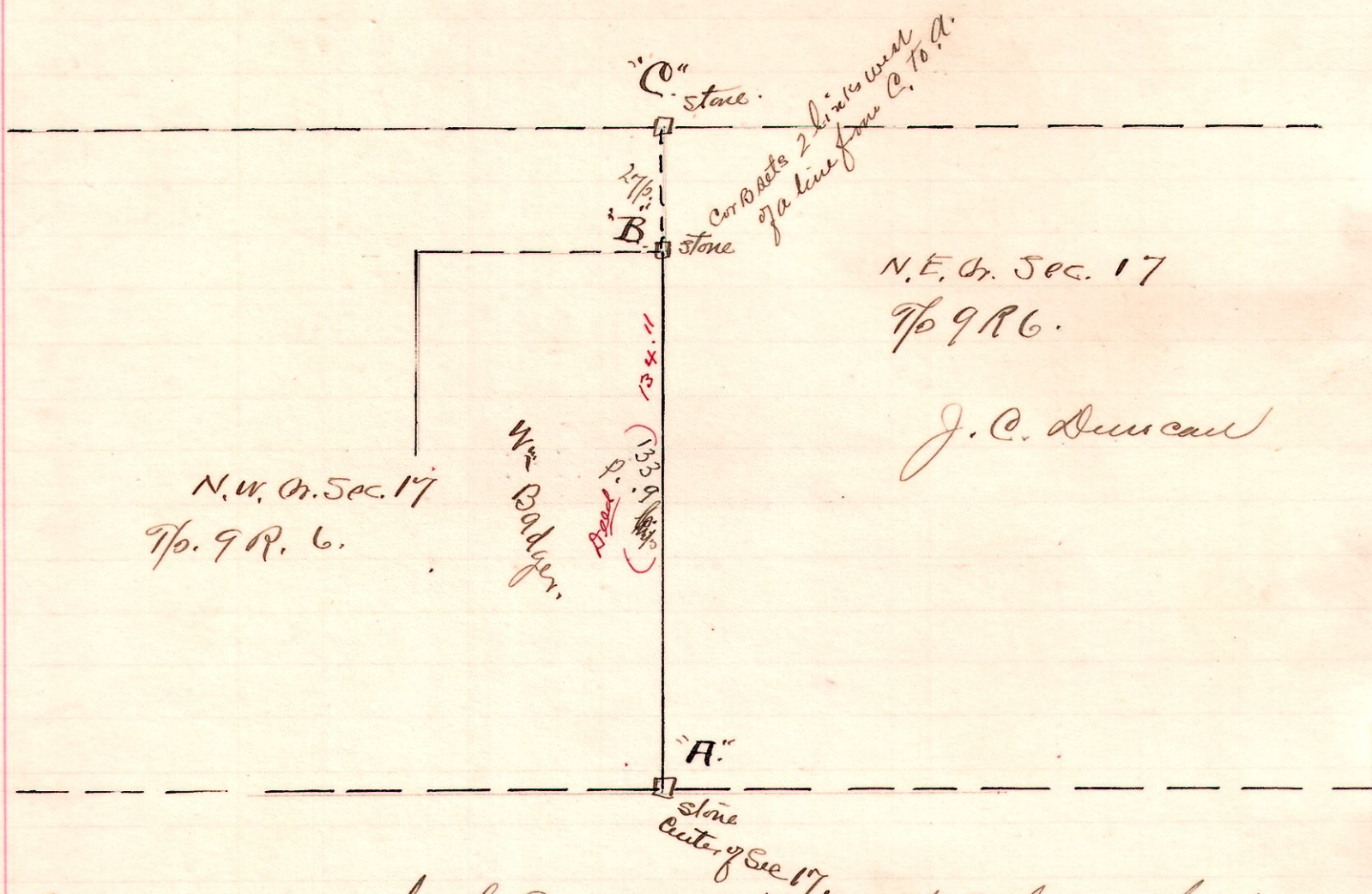


R. T. S.

6917



A survey made for the Trustees of Hardy Tp. D to locate the true line A to B. being a division line between lands of J.C. Duncan on the east and Wm. Badger on the west

"A" is a stone at center of Section 17 found in good condition with original wit. N 41° ~~E~~ (Run 14") now 24" standing 18 lines from said stone.

"B" is a lime stone corner

"C" is a stone on the North quarter line standing in good condition. Run a straight line "A" to "B" and stake same 10 rods apart at South 1/2 and 20 rods at North half

Alex Crilow } chaining  
 J.F. Meyer. } Wm. Mithner Flagman. Present, Isaac Snyder + Wm. Badger.

The fence line is nearly all on the west quarter and is crossed at 60 rods south of "B" the fence is west 5 1/2 ft from a straight line.

January 9, 1913, W.L. Reidenbach Co Surveyors