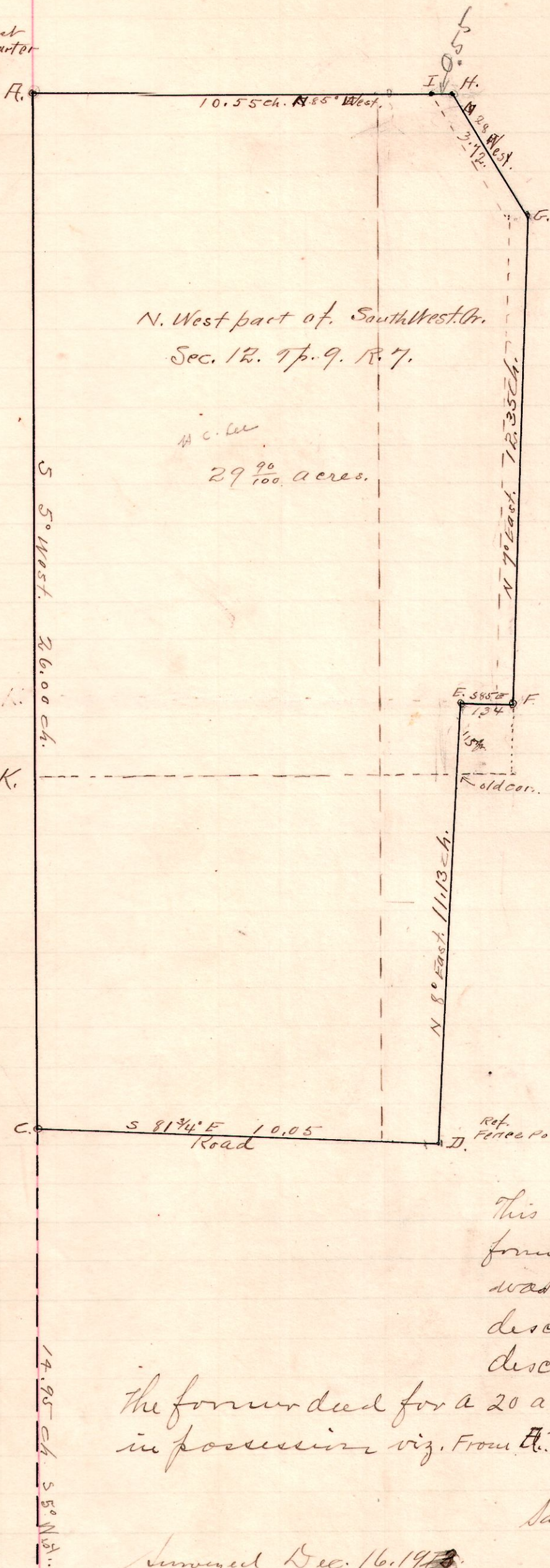


R. T. Sec
7 9 12. SW 1/4 Quarter



N. West part of South West Cr.
Sec. 12. T. 9. R. 7.

H.C. Lee
29 ⁹⁰/₁₀₀ acres.

A Survey made for H. C. Lee and
F. F. Smith to establish lines D. E.
E. F., F. G., G. H., & H. I.

"A." is Post at N. West corner.
"B" is Stone at South West corner.
"C" is Post on West line in road N 5° E 14.95 from B.
"D" is Post in Road S 81 3/4° E 10.05 From C.
Formerly SE. Cor. of Steiner Tract of land.
"E" is Iron Post. 3 1/2" Long 1 1/2" Gas pipe. N 8° E. 11.13 From D.
This corner was established by running north
on west section line 23.47 proportionate
measurements of deeds. Thence East as
calls of deeds and agreed to by F. F. Smith
& H. C. Lee.

"F" is Iron gas pipe corner on west low
water line of West side of head race to old
mill property and was established by
agreement by F. F. Smith & H. C. Lee
for all future surveys to be made, and
stands S 85° E. 1.34 ch from corner E.

"G." Post on West low water line now in creek
at Post 7 ft west of corner.
"H" is now in Creek

"I." is Post on North line of Section N 85 W. 55 links
from "H" and found original markers
standing & good condition

50 ch. S 81 E 40 links from which

Ref. Fence Post N. Side Road. I established the corner I and
corner "G"

This survey comprises all of the lands
formerly owned by Lawrence Jones which
was formerly in 3 tracts. ~~but~~ future
descriptions to be in one (corrected)
description.

The former deed for a 20 acre tract did not cover all land
in possession viz. From A. to K. only.

Saw Anderson, chainman

Surveyed Dec. 16, 1913

W. L. Ridubrek
Co Surveyor

B Stone at SW corner.