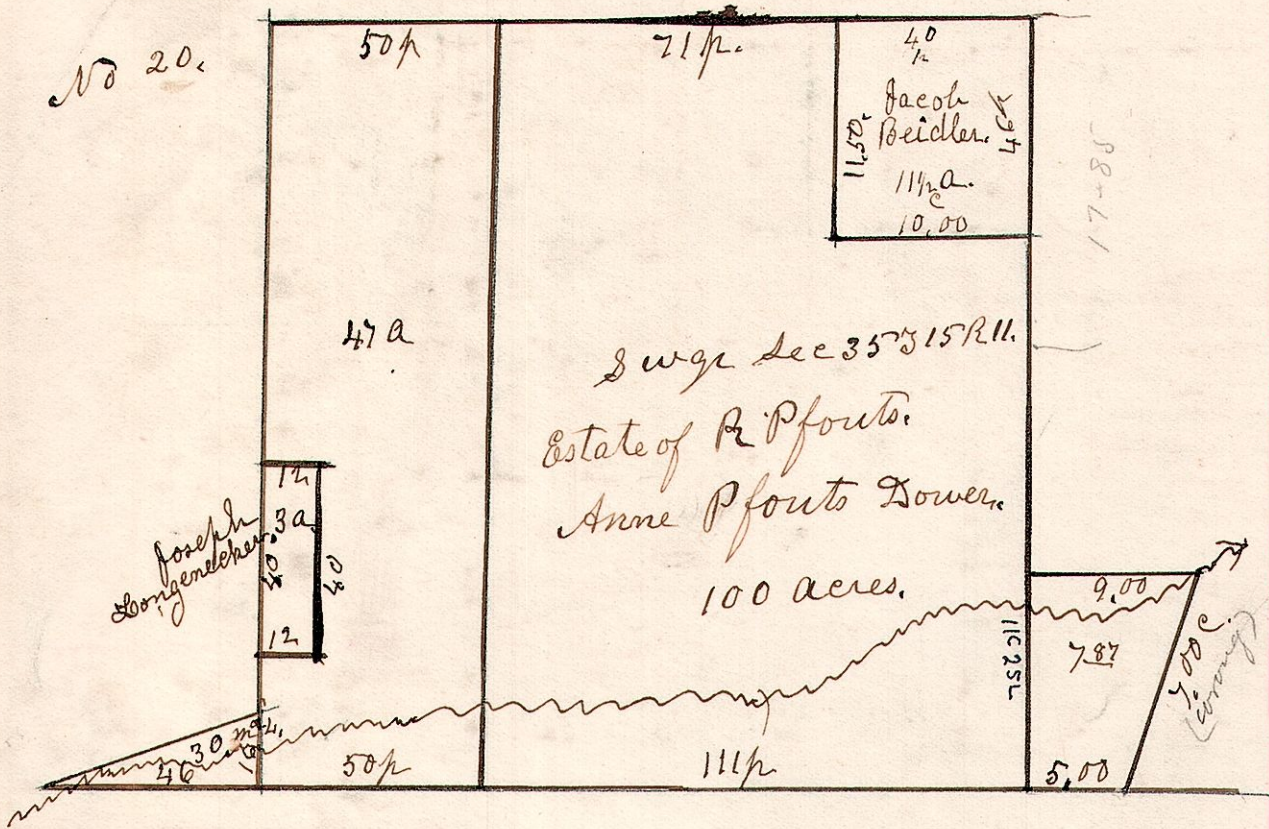


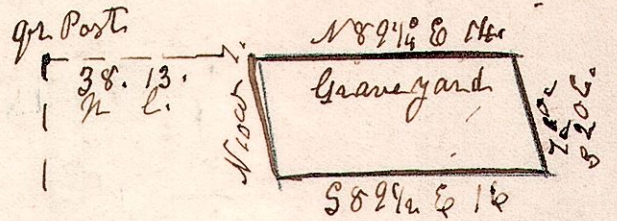
11.15.35.

Reuben Pfouts Estate.
S wgr sec 35 T 15 R 11. Oct 20 1860.



11.14.3.

Pt of Sec sec 35 T 15 R 11. No 21. N 8 9/16 E 16 1/2



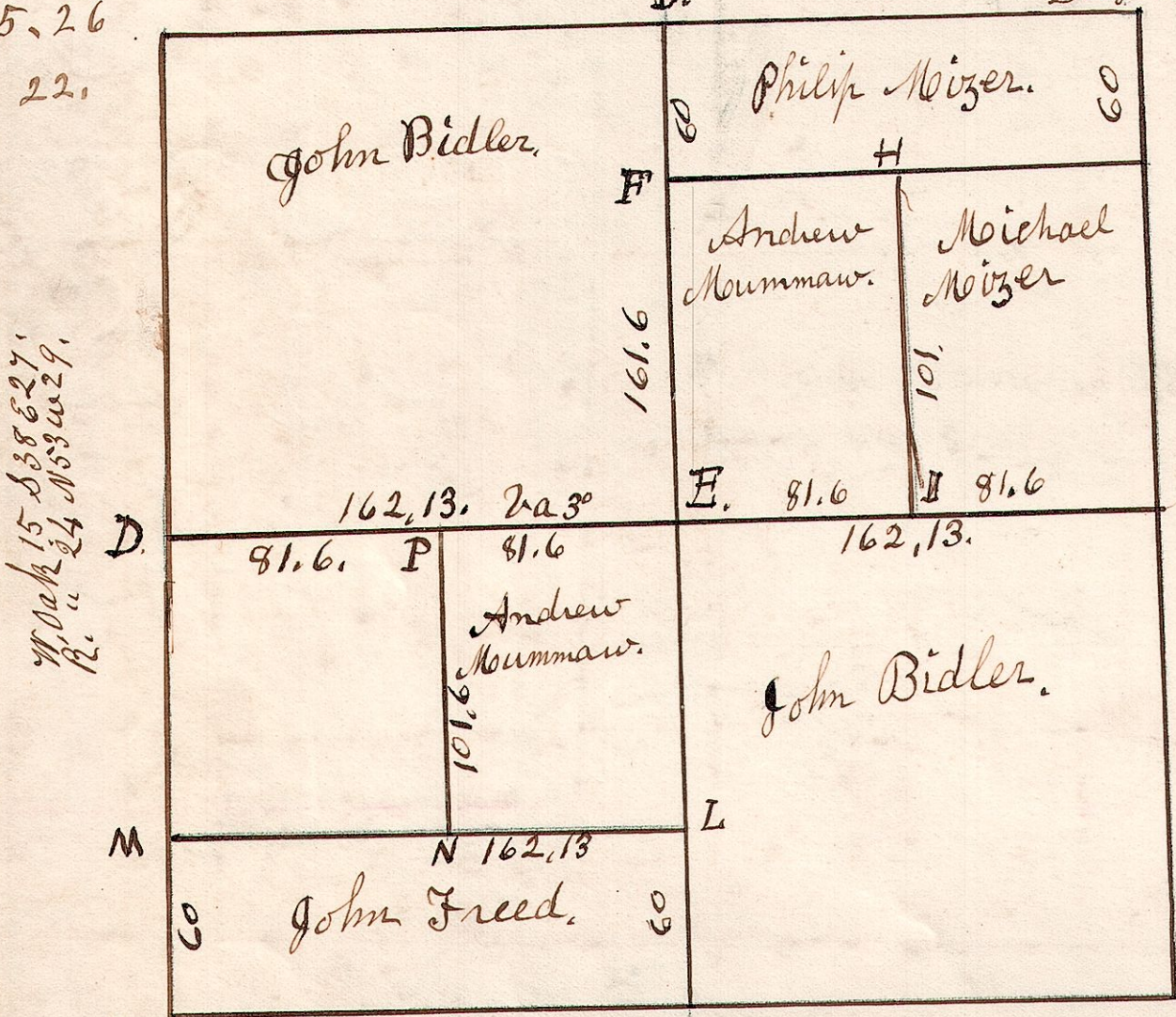
March 20 1857. Surveyed for Joseph Longenecker & others.

March 29 1829. Surveyed Sec 26 in T 15. R 11. in the following manner and for the following persons.

W. Oak 15 N 73 E 7
do 14 N 88 W 14. Hickory 10. N 88 W 17.
Sugar 24. S 16 E 62.

11.15.26

No 22.



W. Oak 15 S 88 E 27.
do 24 N 53 W 29.

Beech 6 S 85 E 18.
W. Oak 15 N 68 E 26.

NW pt of S W to Henry Meizer. 50 acres. Transfer 60 acres S pt S W. to John Freed on Duplicate. Sec 26 to be transferred to John Bidler, for Seth Hunt.

Hickory 24. N 25 W 29.
W. Oak 18. S 26 E 16.

A. W. Oak 18. S 45 W 12.
Ironwood 8. N 42 W 24.

- E. W. Oak 30 S 59 W 34
- F do 21 S 45 E 1 1/2
- F W. Oak 18 N 13 W 29
- " do 15 N 62 E 18
- G Elm 14 S 39 E 39
- " Ash 8 N 54 E 46
- H. Stone corner.
- I. W. Oak 24 S 63 W 14
- " do 16 N 34 W 9
- L W. Oak 24 N 8 E 17
- " Maple 12 S 79 E 16
- M. W. Oak 36. N 27 E 13
- B. " 8. S 5 E 35
- N. Hickory 15. N 86 E 19
- " Elm 8. N 77 W 13
- P. Sugar 5. S 80 E 3
- " do 5. N 84 W 32.