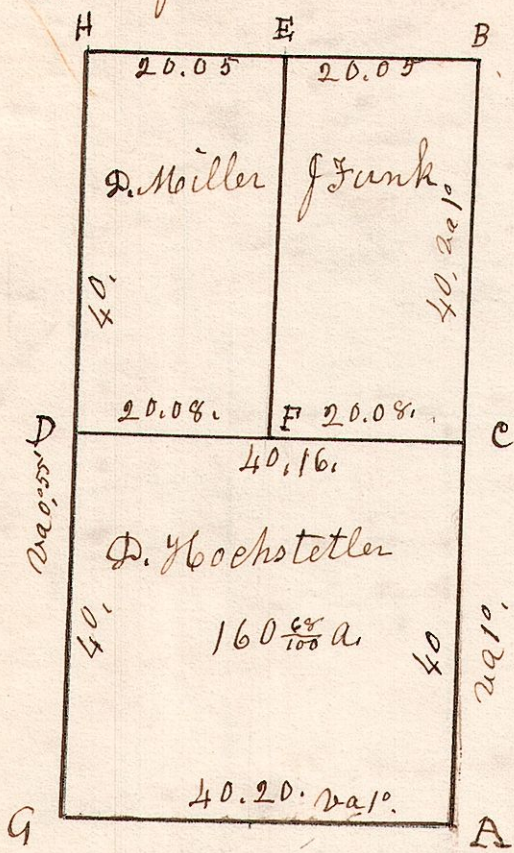


4-9-24

No 58, W 1/2 of Sec 24, T9, R 4.



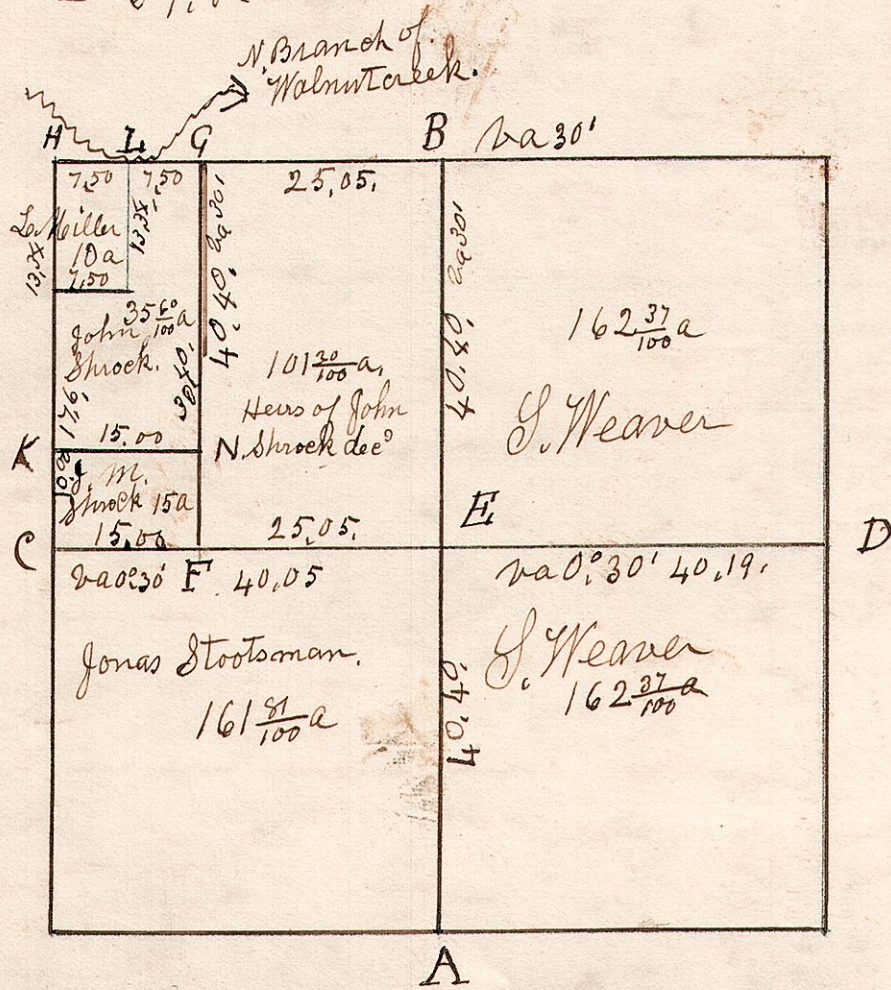
A	W. Oak	22	D 47 E	86.
B	Hickory	12	N 70 W	30
"	Gum	8	N 66 E	45
C	W. Oak	14	N 18 E	15
"	do	20	N 26 E	23
D	W. Oak	12	N 31 E	12
"	W. Oak	16	N 77 W	30
E	W. Oak	30	D 3 W	27
"	do	30	North	13
F	W. Oak	12	N 84 E	21
"	do	15	S 71 W	21
G	Chestnut	50	N 74 E	20
"	Hickory	8	N 62 W	29
H	W. Oak	21	N 17 E	19
"	Hickory	20	N 24 W	10

Surveyed the above May 10<sup>th</sup> 1826.  
 Being the west half of Section No 24 in  
 Township No 9, in Range 4, of which the  
 above is a correct plat of the same.  
 Samuel Robinson Co. Surveyor.

5-9-20.

Dec 20, 59, R 5.

No 59.



A	S. Oak	6	S 78 E	13
B	Ash	12	N 58 W	7
B	S. W. Oak	24	N 25 E	16
C	W. Oak	18	S 81 W	7
"	Service	5	N 39 1/2 E	4
D	W. Oak	14	N 14 E	12
"	do	10	N 88 W	20
E	W. Oak	32	N 85 E	12
"	Ironwood	5	S 50 W	8
F	Chestnut	4	S 25 E	17
"	Sassafras	5	S 72 E	25
G	W. Elm	13	S 14 W	29
"	do	15	S 30 E	35
H	Plum	4	S 50 W	4
"	C. Apple	4	S 81 1/2 E	10
I	Stone	15	the corner	

K	Stone	the corner		
L	Stone	the corner		
"	Hickory	16	S 71 1/2 E	17
M	Cherry	15	N 36 E	29
N	Dogwood	5	N 79 E	7
"	W. Oak	30	N 56 W	45

Surveyed the above May 11<sup>th</sup> 1826.  
 Being Section No 20 in T 9, of R 5,  
 of which the above is a correct plat  
 of the same. Samuel Robinson  
 Co. Surveyor