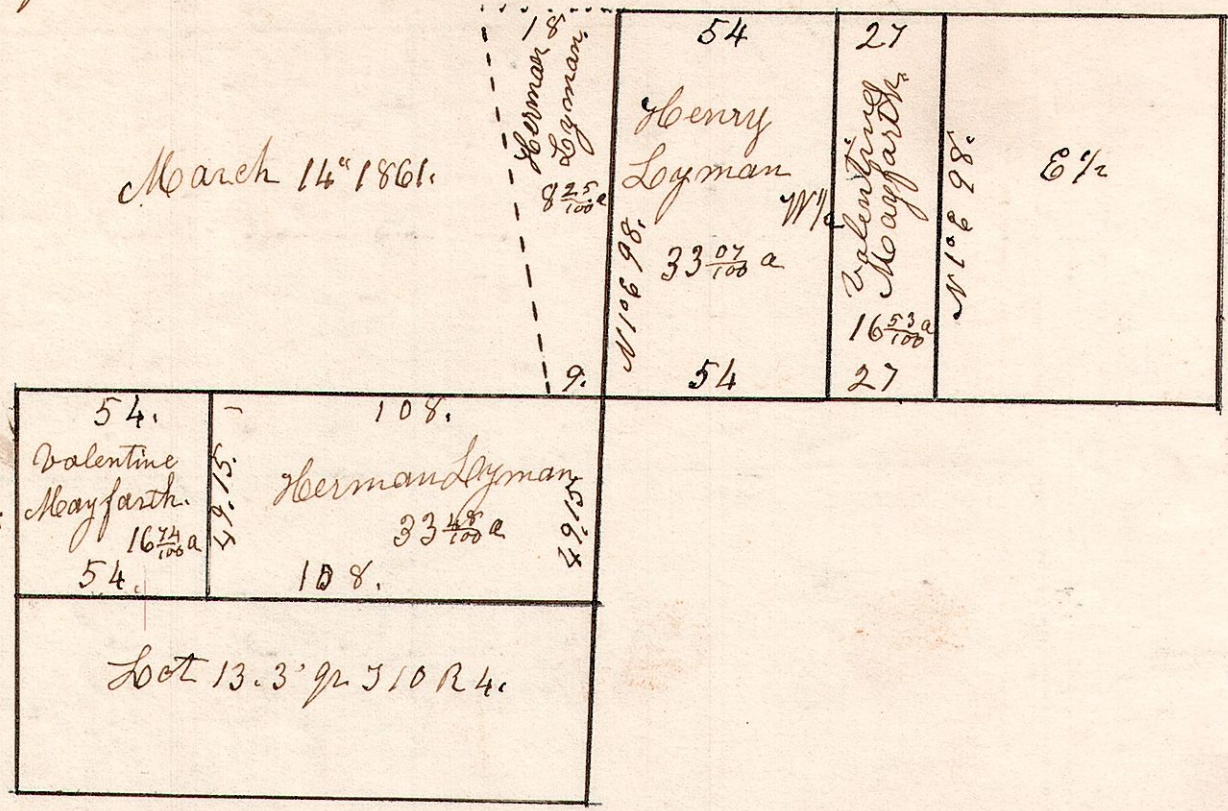


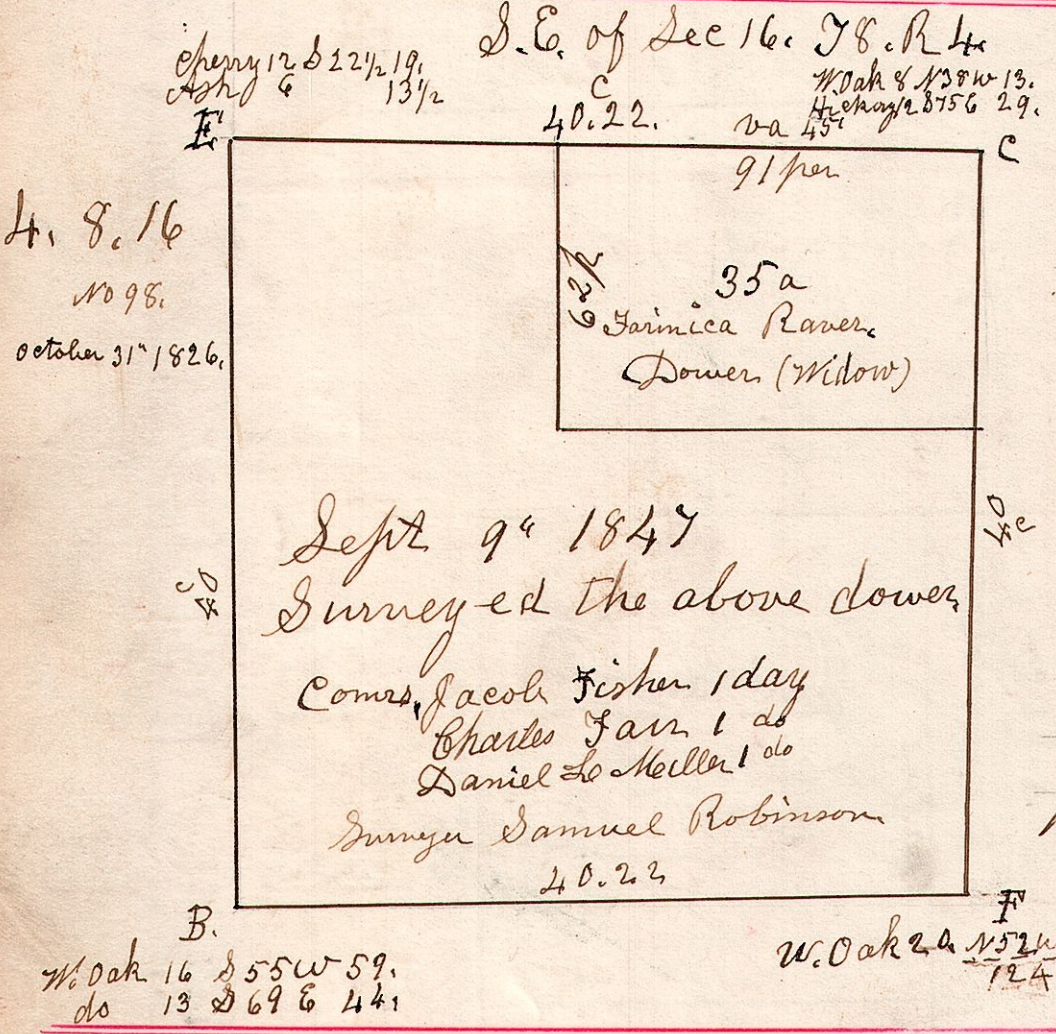
Lot No 5. 3<sup>rd</sup> gr S 10. R 4.

4-10-5+13. 3<sup>rd</sup> gr.

March 14<sup>th</sup> 1861.

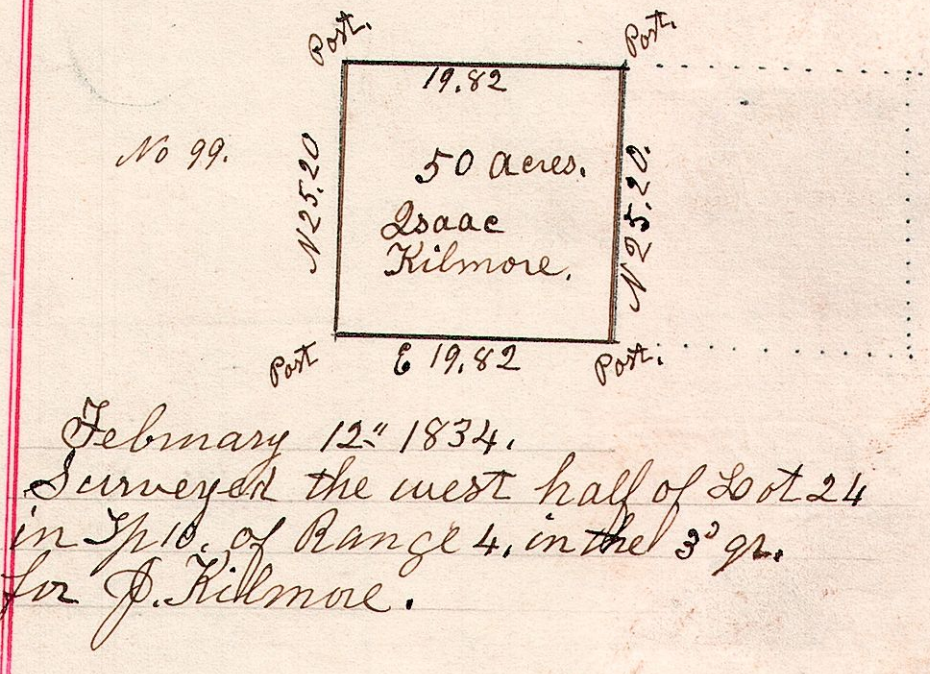


No 97.



4. 8. 16  
No 98.  
October 31<sup>st</sup> 1826.

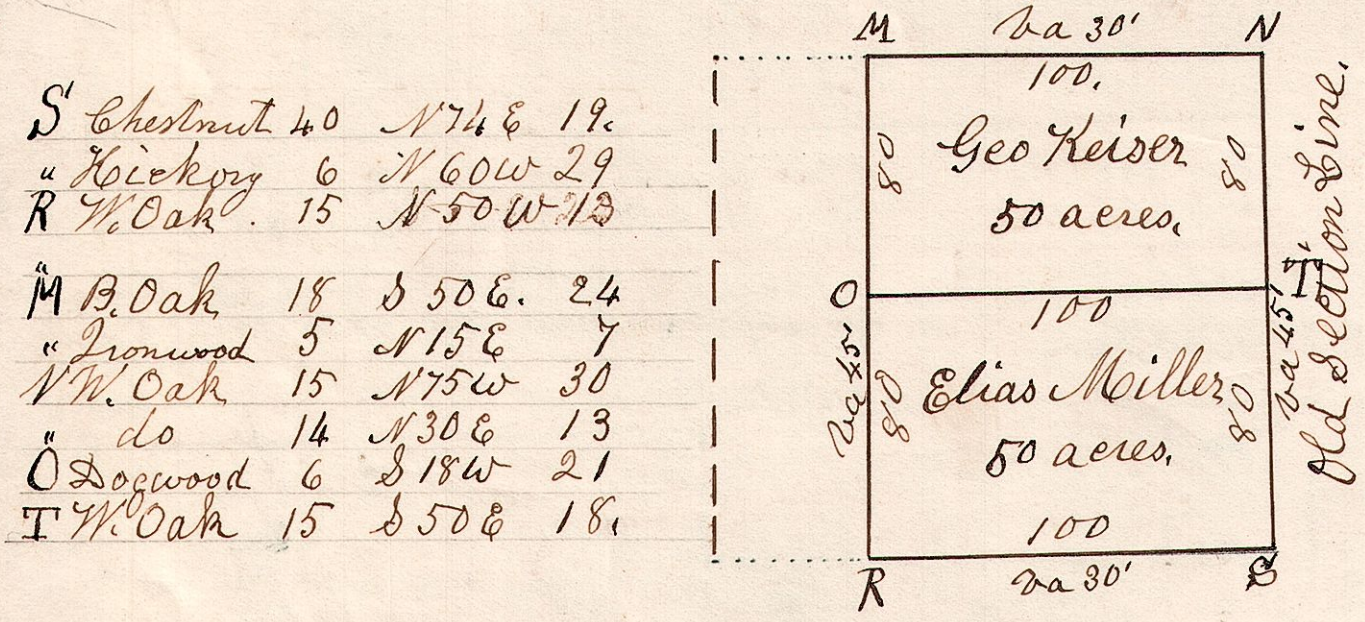
4. 10. 24. 3<sup>rd</sup> gr.



No 99.

4. 9. 25. March 13<sup>th</sup> 1828.  
Surveyed two 50 acre taken out of the S.E. gr of Section 25, in T 9 of Range 4.

No 100.



- S' Chestnut 40 N 74 E 19.
- " Hickory 6 N 60 W 29
- R W. Oak 15 N 50 W 13
- M B. Oak 18 S 50 E. 24
- " Ironwood 5 N 15 E 7
- N W. Oak 15 N 75 W 30
- " do 14 N 30 E 13
- O Dogwood 6 S 18 W 21
- T W. Oak 15 S 50 E 18.