

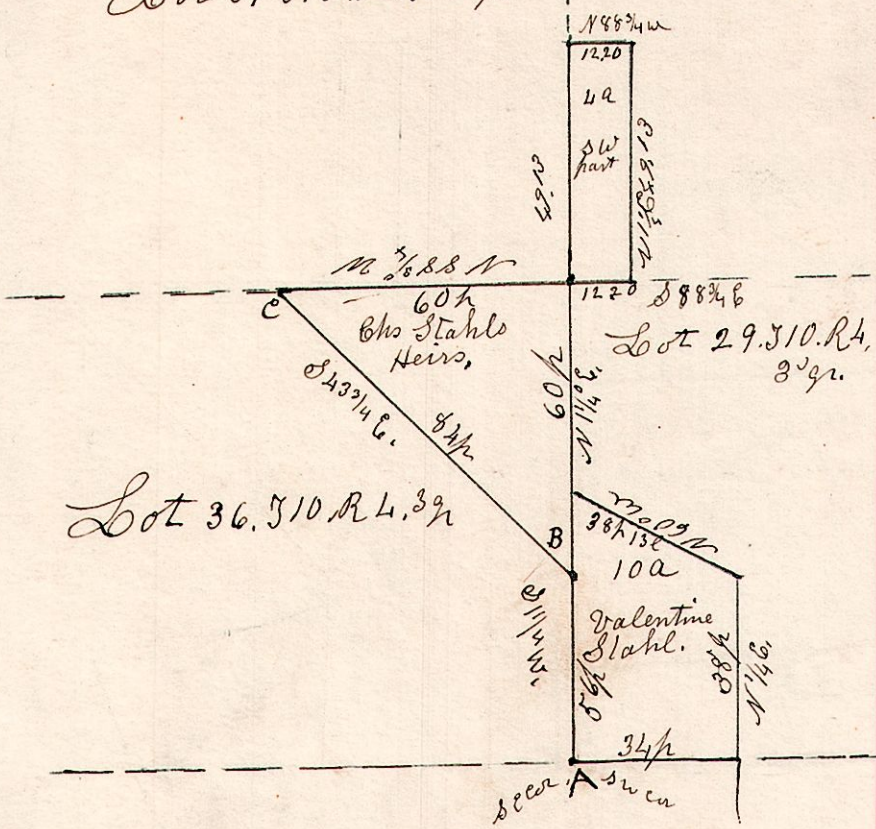
4, 10th 29-29-36 3rd June 25th 1862.

4c 8c 6.

398

Lot 37 510 R 4. 3rd

Lot 28 510 R 7
3rd



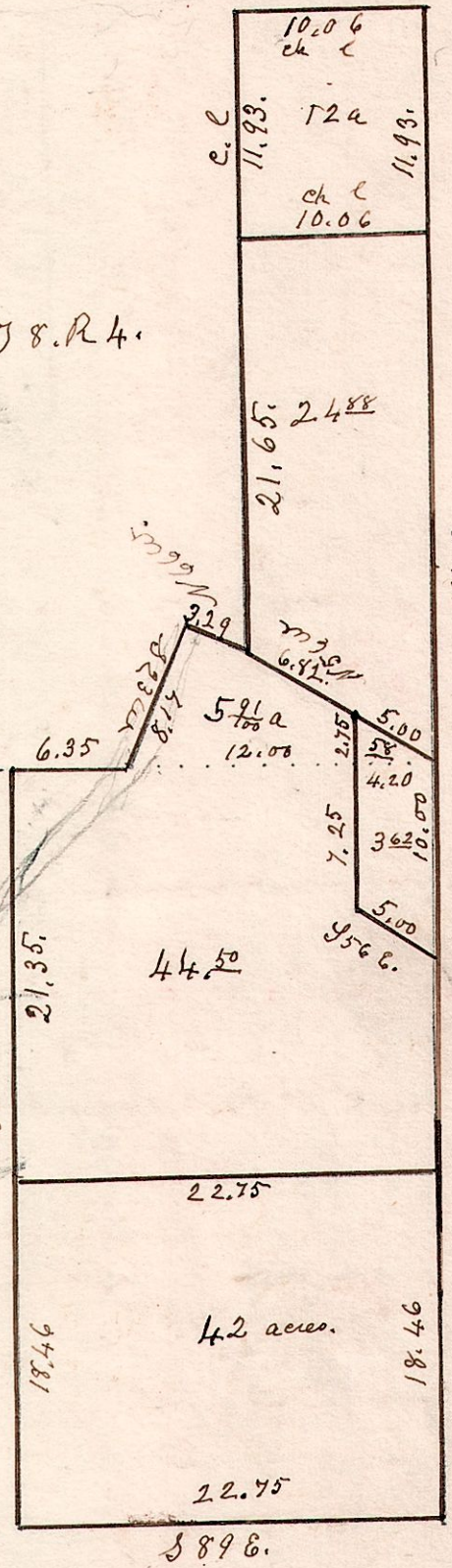
A, Hickory 10. 5616 26.
 " Poplar 16. N. 216 28.
 B. W. Oak 40 west 9.
 C. R. Oak 20. Corner
 The witness trees were taken on a resurvey
 by Co Surveyor H. H. Robinson March 14th 1905

No. 110.

NW 1/4 Sec 6. T 8. R 4.

Surveyed for
Joseph McKline
about August 28th 1855.

S.W. 1/4 of
Sec 6. T 8. R 4.



4c 9c 15

N.W. 1/4 Sec 15. T 9. R 4

