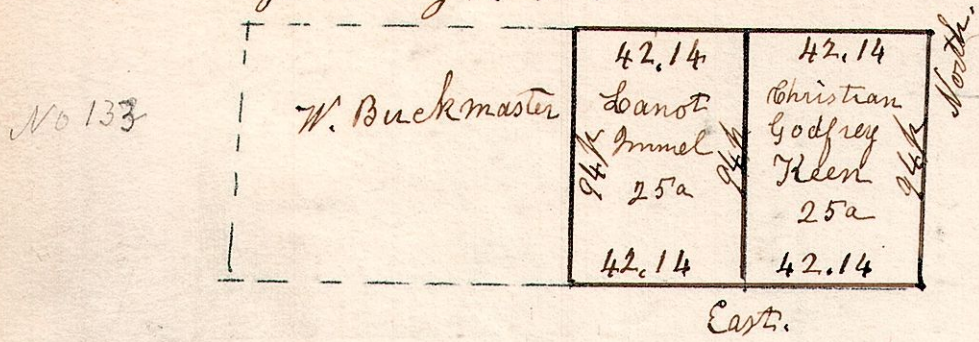


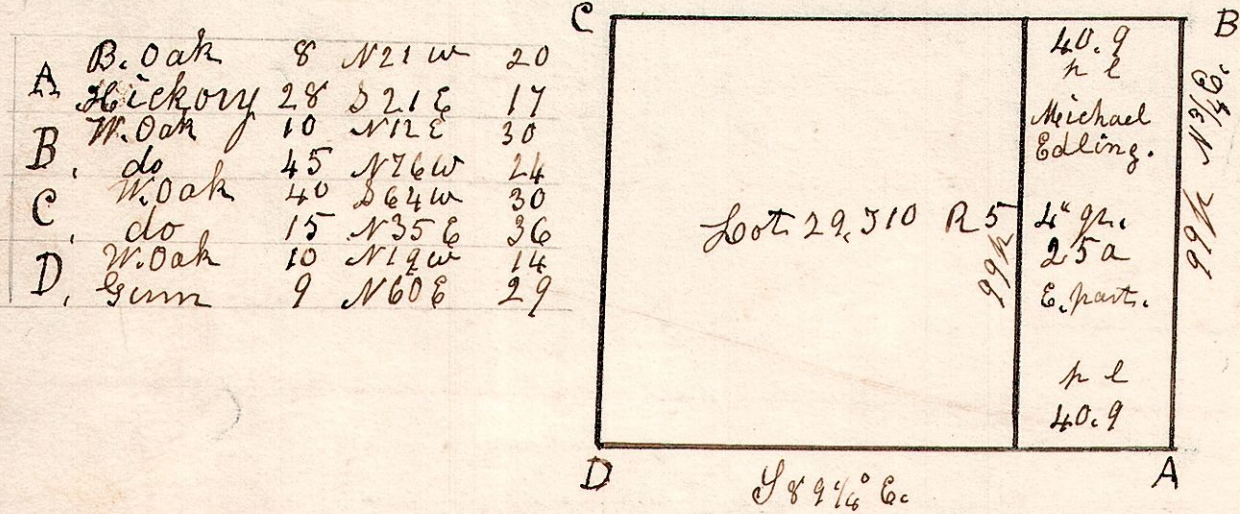
5.10.15.4^q. lot No 15. in the 4^q 510. R5
 January 16th 1841.



5.10.29.4^q. March 14th 1854

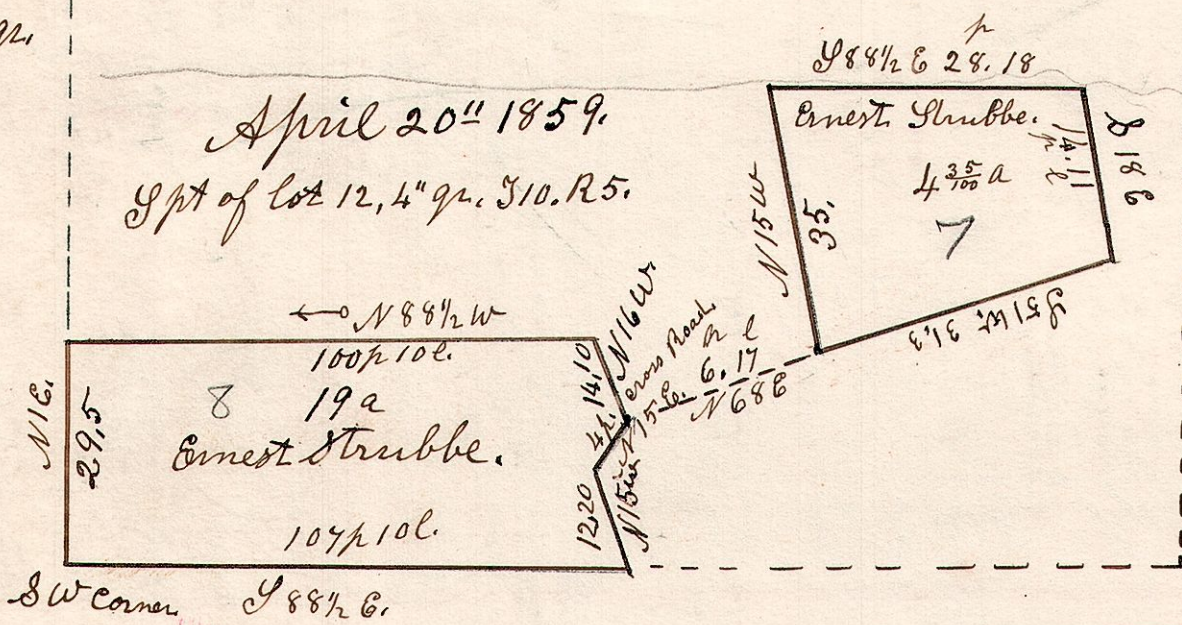
No 134

Lot 29. in 510. R5. 4^q



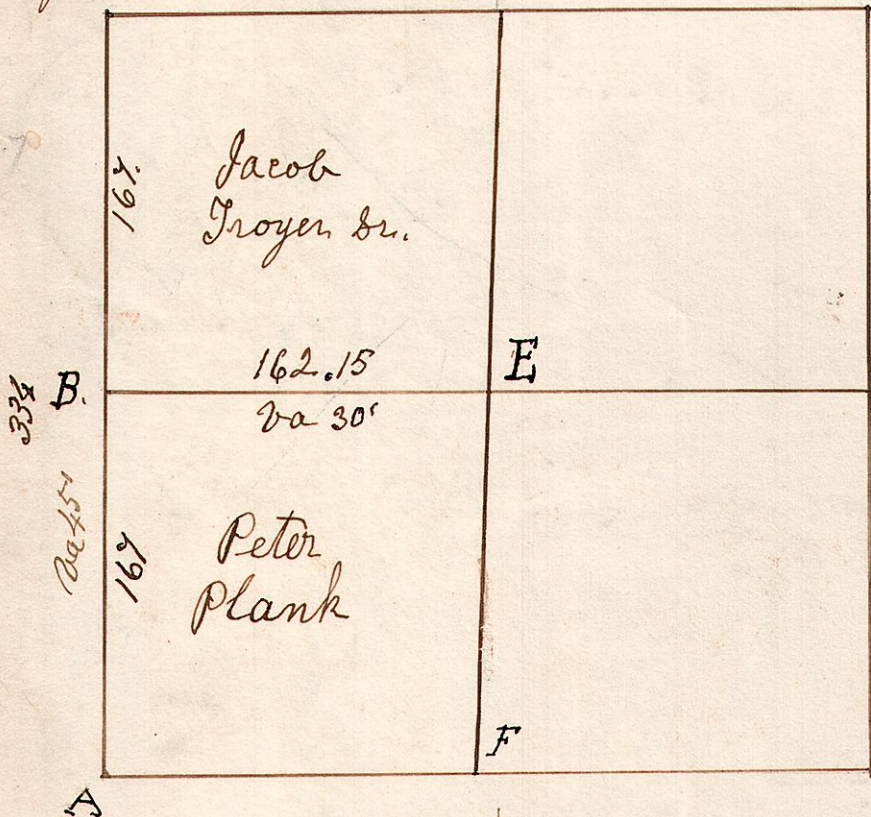
5.10.12.4^q

April 20th 1859.
 Spt of lot 12, 4^q. 510. R5.

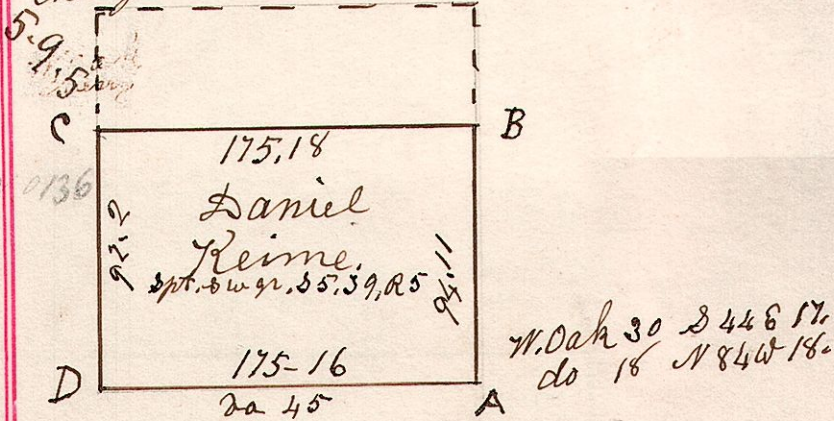


5.9.3.

Sept 22nd 1829. Surveyed the w 1/2 of sec 3
 in 9^q of R5. in the following manner &
 for the following persons.



Sept 21st 1829. Surveyed the spt of the s w 1/4
 of sec 5 in 9^q of R5. W. Oak 24 S 46 12.
 W. Oak 24 S 16 11.
 Cherry 5 S 85 15.



| | |
|---|---------------------|
| A | W. Oak 12 N 18 W 13 |
| | do 24 S 78 W 79 |
| B | W. Oak 40 N 53 E 31 |
| | do 25 S 64 W 27 |
| C | B. Oak 26 N 40 W 22 |
| | do 18 S 64 E 28 |
| D | W. Oak 24 S 28 W 33 |
| | do 14 S 82 E 24 |
| E | W. Oak 20 S 73 E 17 |
| | Hickory 8 S 29 W 14 |
| F | Cherry 24 N 56 W 9 |
| | do 36 N 18 W 21 |